

## Accident and Emergency - Patient journey - Further analysis of the published 2007-08 A&E HES data (experimental statistics)

### Summary

This report is based on the 2007-08 HES dataset and examines the time spent in A&E in England by patients and their destination on leaving the department. During the period covered by the 2007-08 A&E publication not all NHS providers completed data submissions and data quality was considered to be poor in some cases. The HES data available for analysis shows that, in 2007-08:

- For approximately three-quarters (73%) of patients (where records were available) their visit to A&E was completed within three hours, 96% were completed within four hours.
- The number of patients leaving the A&E department per minute increased as time spent approached 4 hours, 6% in the last 10 minutes
- 41% of all A&E patients were discharged with no follow-up required whilst a further 21% were admitted to hospital
- As time spent increased the percentage of patients discharged with no follow-up required fell whilst the percentage admitted increased
- Of those leaving the department, the percentage of patients admitted to hospital peaked between 3 hours 51 minutes and 4 hours

NHS organisations will be able to review their own data to ascertain the extent to which their local trend follows this national pattern. This can be done by using the accompanying interactive spreadsheet tool available (Supporting Provider level A&E analysis 2007-08 [Restricted Statistics].xls).

### Background

The publication of accident and emergency (A&E) attendance 2007-08 data in January 2009 was the first ever publication of Hospital Episode Statistics (HES) A&E data. Publishing as experimental statistics<sup>1</sup> enabled initial conclusions to be presented for discussion and aimed to promote and highlight the potential uses of this rich dataset.

<http://www.hesonline.nhs.uk/Ease/servlet/ContentServer?siteID=1937&categoryID=1117>

---

<sup>1</sup> Experimental statistics are new official statistics that are under going evaluation. A key part of the “Experimental Statistics” label is user engagement in the evaluation of those statistics, and the NHS IC invites readers to comment on this publication, which will help inform the next report. Comments may be sent to enquiries@ic.nhs.uk.

## **RESTRICTED STATISTICS – Until 9.30 am (18<sup>th</sup> November 2009)**

The data covered the period from April 2007 to March 2008, drawing on more than 12.3 million detailed records of attendances at A&E departments, including minor injuries units and walk-in centres in England.

The subsequent incorporation of A&E data into the wider Hospital Episode Statistics (HES) dataset has made new types of analysis possible for the first time. This report examines the time spent in A&E in England by patients and their destination on leaving the department.

However, not all NHS providers completed data submissions and data quality was considered to be poor in some cases. The 2007-08 publication included analysis of the A&E HES data compared to the Quarterly Monitoring of Accident and Emergency (QMAE) return, the official source of A&E information. Nationally, only 62% of those records captured in QMAE were recorded in HES. However, for providers that have submitted data the majority of A&E records in HES have an arrival and departure time. Therefore the duration of time spent in A&E can be derived. The definition of this differs in certain ways from the duration of time used to monitor the government's four hour operational standard for patients attending A&E. Some providers' data may also be affected by data quality issues. Annex A outlines these definitional differences and issues.

The NHS Information Centre continues to work with data suppliers to support improvements.

The analysis presented here is a follow-up to the initial annual publication, providing further analysis around the time that patients spend in A&E and their method of departure. It should be noted that this analysis does not include all 12.3 million records from the initial 2007-08 publication as it excludes planned follow-up appointments and those records with an invalid duration to departure - leaving 11.5 million attendances available for analysis.

## Analysis

Time spent in A&E is derived from the HES data set by subtracting the A&E departure time from the arrival time, both of which are available to the nearest minute.

**Chart 1 – Accident and Emergency attendances in England 2007-08 (Experimental Statistics): Distribution of A&E attendances by total time spent (by minute)**

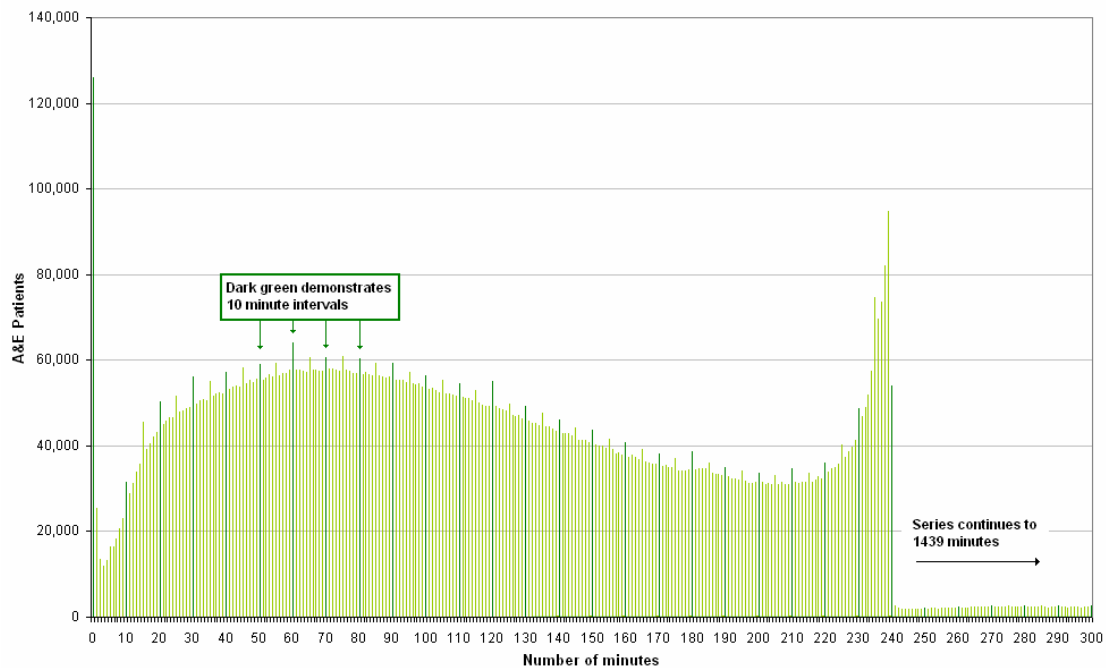


Chart 1 illustrates the reported time patients spent in A&E in England. It is broken down into minute intervals to demonstrate the key underlying trends. Analysis of the underlying data shows that approximately three-quarters of patients depart A&E within three hours of arrival.

The large spike at zero minutes is likely to be due to a combination of two factors: patients who simply pass through A&E who are immediately admitted; and data quality issues with certain providers submitting the default time of 00:00 on their systems.

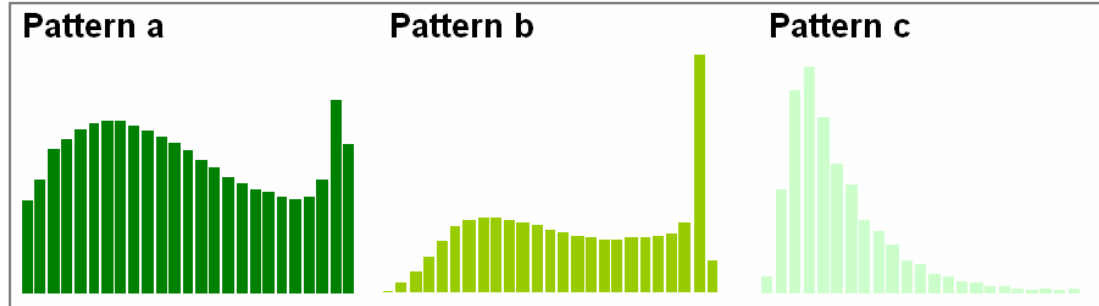
After zero minutes the graph climbs towards a peak of approximately 70 minutes as providers report an increase in the number of patients they are dealing with. Patient departures begin to fall off after the peak at 70 minutes. The fall continues until the 200 minute (03:20 hrs) mark when the number of departures again starts to increase finally reaching a peak at 239 minutes (03:59 hrs), the most rapid increase happening between 231 and 239 minutes (03:51 and 03:59 hrs).

There is a significant drop off in the number of A&E patients with a reported duration in the department of 241 minutes or greater. This low level of departures continues through to a maximum of 1439 minutes. Frequent spikes

## RESTRICTED STATISTICS – Until 9.30 am (18<sup>th</sup> November 2009)

within Chart 1 demonstrate rounding taking place when times are recorded within the A&E department to the nearest 5 or 10 minute intervals, spikes are highest for the hour.

### Chart 2 – Key patterns: Distribution of A&E attendances by total time spent in department 2007-08 (Experimental Statistics)



- vertical axis represents the percentage of patients dealt with during the specific time block
- horizontal axis represents the 10 minute time blocks, up to 4 hours (the final time block represents all time periods beyond 4 hours)

Pattern a – the proportion of patients dealt with increases, as the length of time the patient has been in the A&E department moves towards the 4 hour target.

Pattern b – shows that less people are dealt with throughout the period between 0 minutes and 3 hours 50 minutes (compared to pattern a). In the last 10 minute time slot before the 4 hour target, there is a significant increase.

Pattern c – shows that most patients are dealt with quickly; very few wait longer than 3 hours.

Underpinning the national distribution shown in chart 1 is a range of local distributions. Chart 2 presents this national distribution (pattern a) alongside patterns b and c which represent two of the more extreme local distributions, pattern b contributes disproportionately to the sharp peak around 239 minutes, whilst pattern c contributes to the smoother peak earlier on in the distribution.

They are taken from the accompanying document - Supporting Provider level A&E analysis 2007-08 (Restricted Statistics).xls which allows users to select any provider and view its distribution.

Focusing specifically on the peak in Chart 1 between 231 and 240 minutes (3:51 to 4:00 hours), analysis shows that nationally an average of 6% of A&E attendances are reported as being dealt with during in this period. This ten minute period was investigated further.

**Chart 3 - Accident and Emergency Attendances in England 2007-08 (Experimental Statistics): Chart displaying count of providers by % of A&E HES attendances where arrival to departure duration between 3:51-4:00Hrs**

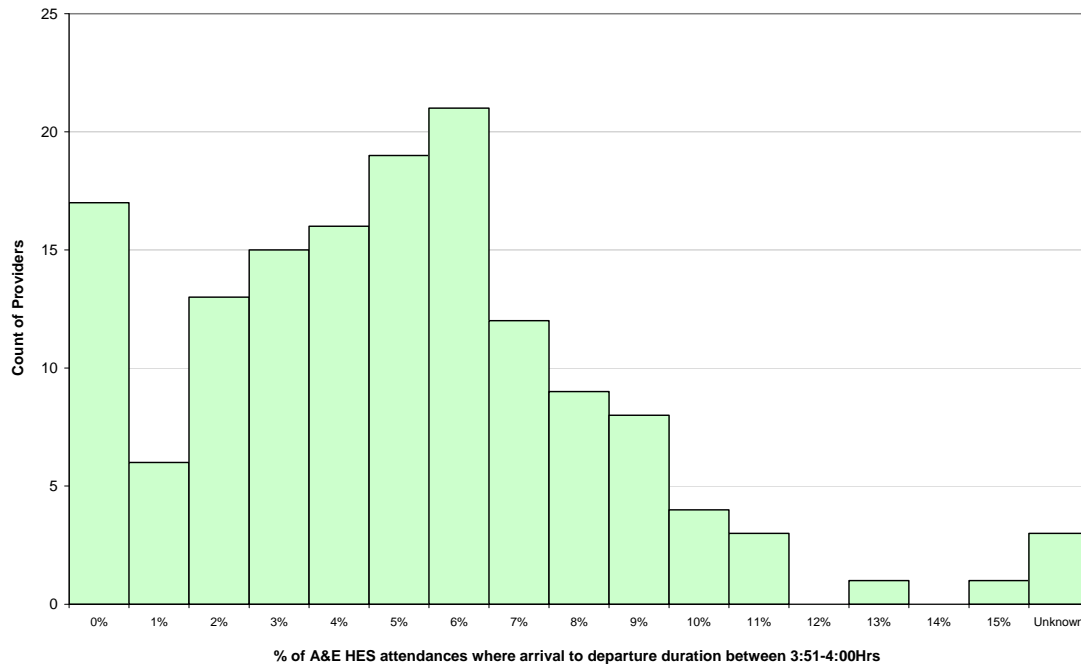


Chart 3 illustrates a significant range of values of the reported percentage of patients being dealt with between 3:51 and 4:00 Hrs by provider. A significant number (17) of providers report that none of their patients depart in this time period. Most providers have a value in the region of 6% of patients. However nine providers have a percentage greater than 9% of patients. Annex B contains a table showing A&E attendances by provider with additional columns to show the percentage and total of A&E HES attendances with arrival to departure duration between 3:51-4:00Hrs. The total attendances submitted under QMAE is also presented in Annex B so that providers with figures that need to be treated with caution due to missing data can be identified.

The disposal method for the patient leaving A&E can be analysed to provide a fuller picture of the patient's A&E journey. When a patient leaves the A&E department a disposal method is recorded, ranging from the patient being admitted / becoming a lodged patient to being referred to a more appropriate provider. Table 1 shows that the bulk of patients are discharged with no follow-up, referred to their GP or admitted. Further, Table 1 shows the highest proportion of all A&E patients (41%) are discharged with no further follow up required, whilst a little over 20% are admitted to the provider to receive further care as an inpatient.

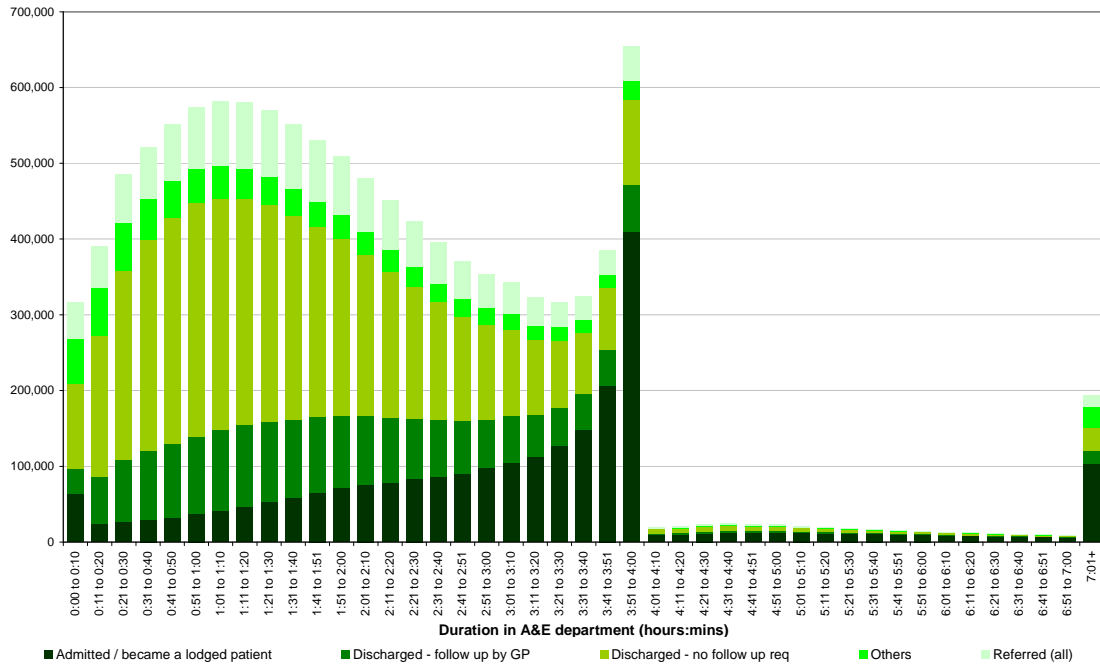
RESTRICTED STATISTICS – Until 9.30 am (18<sup>th</sup> November 2009)

**Table 1 Accident and Emergency Attendances in England 2007-08 (Experimental Statistics): Disposal method of patients in Accident and Emergency**

<b>Disposal method</b>	<b>Number</b>	<b>Percentage %</b>
<b>1. Admitted / became a lodged patient</b>	<b>2,449,689</b>	<b>21.3%</b>
<b>2. Discharged - follow up by GP</b>	<b>1,927,928</b>	<b>16.8%</b>
<b>3. Discharged - no follow up required</b>	<b>4,739,314</b>	<b>41.3%</b>
<b>4. Referred</b>		
Referred to A&E Clinic	342,218	3.0%
Referred to Fracture Clinic	489,230	4.3%
Referred to other OP Clinic	418,929	3.6%
Referred to other health care professional	249,133	2.2%
<b>5. Others</b>		
Died in Department	21,265	0.2%
Transferred to other Health Care Provider	257,236	2.2%
Left Department before being treated	372,696	3.2%
Left Department having refused treatment	42,559	0.4%
Other	148,190	1.3%
Not known	30,749	0.3%
<b>TOTAL</b>	<b>11,489,136</b>	

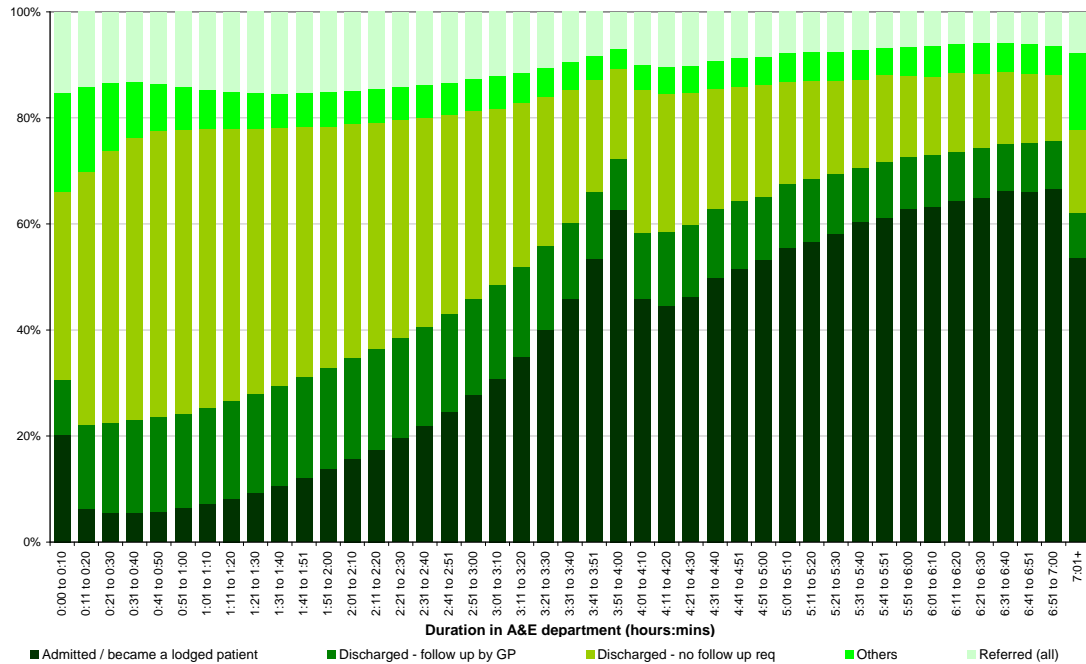
The methods of disposal can be aggregated into main groups – no follow-up required, GP follow-up, admitted, referred (all) and other. Chart 3 shows the volume of attendances dealt with in each ten minute time band, broken down by these main groups. As time spent increases the number discharged with no follow-up required decreases significantly. This is not unexpected as it is likely that patients with more complex needs spend longer before a decision is made. The number admitted increases as time spent increases, the trend is gradual however there is a sudden peak in admissions between 231 to 240 minutes (03:51 to 04:00 hrs) where both the overall number of patients departing and those admitted dramatically increases. The number of departures drops post four hours as the majority of patients have been dealt with by this point.

**Chart 4 – Accident and Emergency attendances in England 2007-08 (Experimental Statistics): Distribution of A&E attendances by total time spent (by ten minute bands), with split bars to illustrate (aggregated) method of departure**



The pattern of disposal method is further explored in Chart 4 by considering the percentage of patients with specific departure methods during the ten minute time bands. Many of the features regarding method of departure in Chart 4 match the trends illustrated in Chart 3. However, the percentage admitted appears to be above the natural expected trend between 200 and 250 minutes (03:20 to 04:10 hrs) with a visible peak between 03:51 to 04:00 hrs when a particularly high percentage of patients are admitted.

**Chart 5 – Accident and Emergency attendances in England 2007-08 (Experimental Statistics): Percentage breakdown of departure method for A&E attendances**



### Supporting Analysis

Supporting analysis at provider level is available within the accompanying Excel spreadsheet (Supporting Provider level A&E analysis (Restricted Statistics).xls and weblink). Within this document you can select your desired provider to compare the distribution of A&E attendances by total time spent in department against the England baseline or another provider. Information is also provided relating to the breakdown of disposal method of A&E patients for providers.

### Further information

The 2007-08 publication of the HES A&E data can be obtained from the following web page:

<http://www.hesonline.nhs.uk/Ease/servlet/ContentServer?siteID=1937&categoryID=1117>

If you would like to investigate further some of the key trends in the HES A&E dataset you can request a bespoke extract of 2007-08 HES A&E data by completing the steps in the document downloadable from the following webpage:

<http://www.hesonline.nhs.uk/Ease/servlet/ContentServer?siteID=1937&categoryID=468>

## RESTRICTED STATISTICS – Until 9.30 am (18<sup>th</sup> November 2009)

### Feedback

We would welcome your feedback on this report and any other topics in HES on which you would like to be investigated. Please address all feedback to: [HES.questions@ic.nhs.uk](mailto:HES.questions@ic.nhs.uk)

### **Annex A** **QMAE and data quality**

The A&E HES dataset contains a number of time fields which can be used to calculate duration times for A&E attendances.

The Quarterly Monitoring of Accident and Emergency (QMAE) aggregate data collection is used to monitor performance on the 4 hour standard and remains the official source of information on performance against the standard.

Duration time between arrival and departure at A&E can be derived from A&E HES. The definition of this differs in several areas from the duration time used in the QMAE four hour standard. These definitional differences provide a legitimate reason why there should be variations between the four hour performance figures reported via QMAE and the arrival to departure figures contained within this report.

<http://www.performance.doh.gov.uk/hospitalactivity/nhsweb/qmaefg.htm>

#### ***The definitional differences are as follows:***

- When recording arrival time within QMAE the guidance states that 'For ambulance cases arrival time is when hand over (of patient from ambulance to A&E staff) occurs or 15 minutes after the ambulance arrives at A&E, whichever is earlier'. The A&E Commissioning Data Set (CDS) definition of arrival time is 'The time of arrival in the A&E department or for Urgent Transport Requests the time the vehicle arrives at the specified destination'. This means that arrival time for ambulance arrivals could be up to 15 minutes later within the QMAE figures than that used for the A&E HES figures.
- The departure time as used by QMAE distinguishes between different groups of patients. Time of departure under QMAE can relate to the time a patient is discharged home. The QMAE guidance states 'Patients awaiting family or 'private' transport or who wish to make their own arrangements should be considered discharged once the clinical episode is complete whether or not they have actually left the department'. The CDS definition of departure time is 'the time that a patient leaves the A&E department after an A&E attendance has concluded and the department is no longer responsible for the care of the patient'. The A&E CDS cannot be used to distinguish this group of patients and so this means the departure time available within A&E HES may be later than that used for the QMAE figures.

## RESTRICTED STATISTICS – Until 9.30 am (18<sup>th</sup> November 2009)

There are also a number of data quality issues which could have an impact upon the arrival to departure calculation using the A&E HES data. One purpose of presenting these data is to highlight where there are differences, so providers can determine whether they are due to data quality issues and, if so, address them in subsequent submissions. These are listed below:

- The data coverage differences between A&E HES attendance data and QMAE attendance data.
- 4.1% of the original 12.3 million attendance records do not have a departure time and these have been removed from the arrival to departure analysis. These attendances will be included in the QMAE figures and had the departure times been submitted by providers they may have had an impact upon the four hour arrival to departure duration percentages.
- There is a larger than expected number of arrival and departure times at 00:00 hours within the data submitted to A&E HES. The arrival and departure times submitted also show a level of rounding to the nearest five, ten or thirty minutes. When calculating the arrival to departure duration this issue could impact upon the percentages when comparing against the QMAE data.

100% of attendances in the A&E HES data had an arrival time and 95.9% of attendances had a departure time. This means that the duration between arrival time and departure time can be calculated for almost all attendances.

### Annex B

**Total Attendances for QMAE (Quarterly Monitoring of Accident and Emergency) 2007-08 and HES Accident and Emergency Attendances in England 2007-08 (Experimental Statistics): Table displaying A&E attendances by provider with additional columns to show the percentage and total of A&E HES attendances with arrival to departure duration between 3:51-4:00Hrs**

PROVIDER	QMAE Total attendances	Total A&E HES attendances (exc. Null and planned follow-up attendances)	A&E HES attendances where arrival to departure duration between 3:51 - 4:00Hrs	Percentage of A&E HES attendances where arrival to departure duration between 3:51 - 4:00Hrs
<b>ENGLAND</b>	<b>19,127,993</b>	<b>11,489,136</b>	<b>653,981</b>	<b>5.7%</b>
AINTREE UNIVERSITY HOSPITALS NHS FOUNDATION TRUST	86,362	84,925	6,106	7.2%
ASHFORD AND ST PETER'S HOSPITALS NHS TRUST	116,038	108,573	5,765	5.3%
BARKING, HAVERING AND REDBRIDGE	205,226	189,791	20,282	10.7%

## RESTRICTED STATISTICS – Until 9.30 am (18<sup>th</sup> November 2009)

HOSPITALS NHS TRUST				
BARNET AND CHASE FARM HOSPITALS NHS TRUST	148,724	79,225	8,051	10.2%
BARNSELY HOSPITAL NHS FOUNDATION TRUST	70,159	70,077	5,995	8.6%
BARTS AND THE LONDON NHS TRUST	117,114	130,252	7,083	5.4%
BASILDON AND THURROCK UNIVERSITY HOSPITALS NHS FOUNDATION TRUST	97,696	87,713	5,332	6.1%
BASINGSTOKE AND NORTH HAMPSHIRE NHS FOUNDATION TRUST	43,039	5,089	109	2.1%
BIRMINGHAM CHILDREN'S HOSPITAL NHS FOUNDATION TRUST	45,010	-	-	-
BLACKPOOL, FYLDE AND WYRE HOSPITALS NHS FOUNDATION TRUST	90,028	6,599	188	2.8%
BOLTON HOSPITALS NHS TRUST	105,772	105,258	4,444	4.2%
BRADFORD TEACHING HOSPITALS NHS FOUNDATION TRUST	113,911	19,784	1,445	7.3%
BRIGHTON AND SUSSEX UNIVERSITY HOSPITALS NHS TRUST	127,671	128,381	5,279	4.1%
BROMLEY HOSPITALS NHS TRUST	90,891	90,261	8,651	9.6%
BURTON HOSPITALS NHS TRUST	55,988	55,685	3,953	7.1%
CAMBRIDGE UNIVERSITY HOSPITALS NHS FOUNDATION TRUST	81,945	82,073	12,603	15.4%
CENTRAL MANCHESTER AND MANCHESTER CHILDREN'S UNIVERSITY HOSPITALS NHS TRUST	196,169	193,193	6,583	3.4%
CHELSEA AND WESTMINSTER HOSPITAL NHS FOUNDATION TRUST	97,688	-	-	-
CHESTERFIELD ROYAL HOSPITAL NHS FOUNDATION TRUST	60,400	58,390	3,558	6.1%
CITY HOSPITALS SUNDERLAND NHS FOUNDATION TRUST	101,051	90,789	3,167	3.5%
COLCHESTER HOSPITAL UNIVERSITY NHS FOUNDATION TRUST	80,272	85,402	6,917	8.1%
COUNTESS OF CHESTER HOSPITAL NHS FOUNDATION TRUST	66,647	66,606	3,803	5.7%
COUNTY DURHAM AND DARLINGTON NHS FOUNDATION TRUST	139,969	94,950	2,888	3.0%
DERBY HOSPITALS NHS FOUNDATION TRUST	104,834	97,173	4,148	4.3%
DERBYSHIRE COUNTY PCT	67,955	11,969	*	*
DEVON PCT	135,972	46,342	44	0.1%
DORSET COUNTY HOSPITAL NHS FOUNDATION TRUST	45,338	42,629	2,359	5.5%
DORSET PCT	36,948	5,606	*	*
DUDLEY GROUP OF HOSPITALS NHS TRUST	96,565	96,535	5,742	5.9%
EALING HOSPITAL NHS TRUST	102,101	97,706	3,839	3.9%
EAST CHESHIRE NHS TRUST	55,311	52,873	3,485	6.6%
EAST KENT HOSPITALS NHS TRUST	185,198	161,307	13,331	8.3%
EAST SUSSEX HOSPITALS NHS TRUST	115,227	96,748	5,853	6.0%
EASTERN AND COASTAL KENT PCT	90,722	71	0	0.0%
EPSOM AND ST HELIER UNIVERSITY HOSPITALS NHS TRUST	128,108	127,787	7,365	5.8%
FRIMLEY PARK HOSPITAL NHS FOUNDATION TRUST	90,525	89,983	7,305	8.1%
GATESHEAD HEALTH NHS FOUNDATION TRUST	59,388	575	14	2.4%
GEORGE ELIOT HOSPITAL NHS TRUST	59,112	59,567	3,703	6.2%
GLOUCESTERSHIRE HOSPITALS NHS FOUNDATION TRUST	100,582	91,279	3,155	3.5%
GLOUCESTERSHIRE PCT	57,801	51,243	100	0.2%
HAMPSHIRE PCT	19,181	14,904	102	0.7%
HARROGATE AND DISTRICT NHS FOUNDATION TRUST	42,369	40,684	1,512	3.7%
HEART OF ENGLAND NHS FOUNDATION TRUST	238,226	232,122	10,459	4.5%
HEATHERWOOD AND WEXHAM PARK HOSPITALS NHS FOUNDATION TRUST	107,453	92,532	4,949	5.3%
HEREFORD HOSPITALS NHS TRUST	42,927	42,454	2,625	6.2%
HEREFORDSHIRE PCT	11,315	9,923	*	*

## RESTRICTED STATISTICS – Until 9.30 am (18<sup>th</sup> November 2009)

HINCHINGBROOKE HEALTH CARE NHS TRUST	33,427	32,532	1,914	5.9%
HOMERTON UNIVERSITY HOSPITAL NHS FOUNDATION TRUST	109,881	109,294	5,800	5.3%
IMPERIAL COLLEGE HEALTHCARE NHS TRUST	106,964	110,559	8,789	7.9%
IPSWICH HOSPITAL NHS TRUST	51,084	50,922	3,623	7.1%
ISLE OF WIGHT NHS PCT	37,163	27,226	1,170	4.3%
JAMES PAGET UNIVERSITY HOSPITALS NHS FOUNDATION TRUST	60,909	60,802	2,761	4.5%
KETTERING GENERAL HOSPITAL NHS TRUST	77,591	62,564	5,811	9.3%
KINGSTON HOSPITAL NHS TRUST	103,426	103,428	8,509	8.2%
LANCASHIRE TEACHING HOSPITALS NHS FOUNDATION TRUST	114,282	114,271	4,827	4.2%
LEEDS TEACHING HOSPITALS NHS TRUST	221,640	221,639	11,390	5.1%
LIVERPOOL WOMEN'S NHS FOUNDATION TRUST	12,331	12,368	146	1.2%
MAIDSTONE AND TUNBRIDGE WELLS NHS TRUST	104,819	86,550	7,871	9.1%
MAYDAY HEALTHCARE NHS TRUST	157,946	124,803	7,765	6.2%
MID CHESHIRE HOSPITALS NHS FOUNDATION TRUST	76,681	76,598	1,975	2.6%
MID ESSEX HOSPITAL SERVICES NHS TRUST	73,597	70,889	3,975	5.6%
MID STAFFORDSHIRE NHS FOUNDATION TRUST	66,571	49,989	4,355	8.7%
MID YORKSHIRE HOSPITALS NHS TRUST	185,714	186,828	9,019	4.8%
MILTON KEYNES HOSPITAL NHS FOUNDATION TRUST	67,808	64,340	4,302	6.7%
MOORFIELDS EYE HOSPITAL NHS FOUNDATION TRUST	59,066	49,782	480	1.0%
NEWHAM UNIVERSITY HOSPITAL NHS TRUST	140,070	85,266	7,741	9.1%
NORFOLK AND NORWICH UNIVERSITY HOSPITAL NHS FOUNDATION TRUST	82,988	82,868	5,839	7.0%
NORTH BRISTOL NHS TRUST	102,521	15,041	689	4.6%
NORTH CHESHIRE HOSPITALS NHS TRUST	93,284	90,502	4,875	5.4%
NORTH CUMBRIA ACUTE HOSPITALS NHS TRUST	67,517	67,093	1,018	1.5%
NORTH MIDDLESEX UNIVERSITY HOSPITAL NHS TRUST	143,598	108,165	7,932	7.3%
NORTH SOMERSET PCT	7,931	*	*	*
NORTH STAFFORDSHIRE PCT	7,180	9,524	*	*
NORTH TEES AND HARTLEPOOL NHS FOUNDATION TRUST	96,800	93,278	1,211	1.3%
NORTH WEST LONDON HOSPITALS NHS TRUST	198,771	187,385	13,346	7.1%
NORTHERN DEVON HEALTHCARE NHS TRUST	50,385	44,747	1,696	3.8%
NORTHERN LINCOLNSHIRE AND GOOLE HOSPITALS NHS FOUNDATION TRUST	132,235	132,235	3,226	2.4%
NORTHUMBRIA HEALTHCARE NHS FOUNDATION TRUST	164,591	158,604	6,143	3.9%
NOTTINGHAM UNIVERSITY HOSPITALS NHS TRUST	162,792	135,437	9,110	6.7%
OXFORD RADCLIFFE HOSPITALS NHS TRUST	115,603	100,990	11,829	11.7%
PENNINE ACUTE HOSPITALS NHS TRUST	256,966	256,982	12,780	5.0%
PETERBOROUGH AND STAMFORD HOSPITALS NHS FOUNDATION TRUST	66,309	68,212	3,324	4.9%
PLYMOUTH HOSPITALS NHS TRUST	98,770	81,153	5,251	6.5%
PORTSMOUTH HOSPITALS NHS TRUST	116,749	101,885	5,467	5.4%
QUEEN ELIZABETH HOSPITAL NHS TRUST	99,534	99,453	3,598	3.6%
QUEEN MARY'S SIDCUP NHS TRUST	76,639	47,503	2,408	5.1%
QUEEN VICTORIA HOSPITAL NHS FOUNDATION TRUST	11,379	11,312	106	0.9%
ROYAL CORNWALL HOSPITALS NHS TRUST	69,269	44,182	4,351	9.8%
ROYAL DEVON AND EXETER NHS FOUNDATION TRUST	76,967	23,173	1,489	6.4%
ROYAL FREE HAMPSTEAD NHS TRUST	77,659	77,116	9,128	11.8%
ROYAL LIVERPOOL AND BROADGREEN UNIVERSITY HOSPITALS NHS TRUST	118,516	106,268	8,796	8.3%
ROYAL LIVERPOOL CHILDRENS NHS TRUST	58,686	58,683	305	0.5%
ROYAL SURREY COUNTY HOSPITAL NHS TRUST	57,094	56,866	3,395	6.0%

## RESTRICTED STATISTICS – Until 9.30 am (18<sup>th</sup> November 2009)

ROYAL WEST SUSSEX NHS TRUST	50,886	50,892	1,716	3.4%
SALFORD ROYAL NHS FOUNDATION TRUST	75,572	69,986	3,342	4.8%
SALISBURY NHS FOUNDATION TRUST	39,768	39,758	3,568	9.0%
SANDWELL AND WEST BIRMINGHAM HOSPITALS NHS TRUST	224,740	-	-	-
SCARBOROUGH AND NORTH EAST YORKSHIRE HEALTH CARE NHS TRUST	65,939	65,927	1,353	2.1%
SHEFFIELD CHILDRENS NHS FOUNDATION TRUST	46,893	46,756	407	0.9%
SHEFFIELD TEACHING HOSPITALS NHS FOUNDATION TRUST	171,060	117,736	2,447	2.1%
SHERWOOD FOREST HOSPITALS NHS FOUNDATION TRUST	100,657	96,832	3,504	3.6%
SHREWSBURY AND TELFORD HOSPITAL NHS TRUST	103,080	98,930	0	0.0%
SOUTH DEVON HEALTHCARE NHS FOUNDATION TRUST	71,596	69,277	4,101	5.9%
SOUTH STAFFORDSHIRE PCT	60,971	14,535	*	*
SOUTH TEES HOSPITALS NHS TRUST	121,041	118,418	3,555	3.0%
SOUTH TYNESIDE NHS FOUNDATION TRUST	52,913	52,797	1,978	3.7%
SOUTH WARWICKSHIRE GENERAL HOSPITALS NHS TRUST	57,100	51,849	5,317	10.3%
SOUTHAMPTON UNIVERSITY HOSPITALS NHS TRUST	103,373	99,543	7,710	7.7%
SOUTHEND UNIVERSITY HOSPITAL NHS FOUNDATION TRUST	88,550	81,199	2,216	2.7%
SOUTHPORT AND ORMSKIRK HOSPITAL NHS TRUST	80,500	20,455	828	4.0%
ST HELENS AND KNOWSLEY HOSPITALS NHS TRUST	99,080	164,481	10,139	6.2%
STOCKPORT NHS FOUNDATION TRUST	78,625	80,851	8,507	10.5%
SURREY AND SUSSEX HEALTHCARE NHS TRUST	55,481	41,570	2,764	6.6%
SWINDON AND MARLBOROUGH NHS TRUST	62,648	60,594	3,486	5.8%
TAMESIDE HOSPITAL NHS FOUNDATION TRUST	77,691	77,563	7,141	9.2%
THE HILLINGDON HOSPITAL NHS TRUST	126,226	98,938	6,736	6.8%
THE LEWISHAM HOSPITAL NHS TRUST	142,943	106,835	8,741	8.2%
THE NEWCASTLE UPON TYNE HOSPITALS NHS FOUNDATION TRUST	131,637	74,734	1,419	1.9%
THE PRINCESS ALEXANDRA HOSPITAL NHS TRUST	85,623	83,579	6,195	7.4%
THE QUEEN ELIZABETH HOSPITAL KING'S LYNN NHS TRUST	61,460	59,896	4,027	6.7%
THE ROYAL BOURNEMOUTH AND CHRISTCHURCH HOSPITALS NHS FOUNDATION TRUST	63,489	58,933	988	1.7%
THE ROYAL WOLVERHAMPTON HOSPITALS NHS TRUST	98,510	94,966	2,371	2.5%
THE WHITTINGTON HOSPITAL NHS TRUST	91,605	72,313	9,992	13.8%
TORBAY CARE TRUST	9,274	6,340	*	*
TRAFFORD HEALTHCARE NHS TRUST	54,755	54,064	2,316	4.3%
UNITED BRISTOL HEALTHCARE NHS TRUST	109,858	110,345	3,605	3.3%
UNITED LINCOLNSHIRE HOSPITALS NHS TRUST	174,809	162,491	4,711	2.9%
UNIVERSITY COLLEGE LONDON HOSPITALS NHS FOUNDATION TRUST	96,070	91,768	5,859	6.4%
UNIVERSITY HOSPITAL BIRMINGHAM NHS FOUNDATION TRUST	81,762	81,765	6,006	7.3%
UNIVERSITY HOSPITAL OF NORTH STAFFORDSHIRE NHS TRUST	142,922	96,096	6,626	6.9%
UNIVERSITY HOSPITAL OF SOUTH MANCHESTER NHS FOUNDATION TRUST	79,277	79,277	9,047	11.4%
UNIVERSITY HOSPITALS COVENTRY AND WARWICKSHIRE NHS TRUST	142,586	142,583	12,205	8.6%
UNIVERSITY HOSPITALS OF LEICESTER NHS TRUST	238,025	153,842	8,970	5.8%
UNIVERSITY HOSPITALS OF MORECAMBE BAY NHS TRUST	102,022	101,105	2,931	2.9%

## RESTRICTED STATISTICS – Until 9.30 am (18<sup>th</sup> November 2009)

WALSALL HOSPITALS NHS TRUST	79,639	79,486	2,212	2.8%
WANDSWORTH PCT	16,569	13,650	*	*
WEST HERTFORDSHIRE HOSPITALS NHS TRUST	120,647	110,924	5,020	4.5%
WEST MIDDLESEX UNIVERSITY HOSPITAL NHS TRUST	102,455	91,673	6,441	7.0%
WEST SUFFOLK HOSPITALS NHS TRUST	46,032	45,961	2,964	6.4%
WEST SUSSEX PCT	58,796	8,732	17	0.2%
WESTON AREA HEALTH NHS TRUST	47,537	47,403	2,684	5.7%
WHIPPS CROSS UNIVERSITY HOSPITAL NHS TRUST	95,732	90,658	5,576	6.2%
WINCHESTER AND EASTLEIGH HEALTHCARE NHS TRUST	55,357	55,312	1,850	3.3%
WIRRAL UNIVERSITY TEACHING HOSPITAL NHS FOUNDATION TRUST	93,547	93,378	3,929	4.2%
WORCESTERSHIRE ACUTE HOSPITALS NHS TRUST	132,754	132,814	8,414	6.3%
WRIGHTINGTON, WIGAN AND LEIGH NHS TRUST	85,227	41,010	1,151	2.8%
YEOVIL DISTRICT HOSPITAL NHS FOUNDATION TRUST	42,016	42,016	3,790	9.0%
YORK HOSPITALS NHS FOUNDATION TRUST	64,658	31,964	1,268	4.0%

Please note - where a provider is not included in annex b, data has not been provided