



The
Information
Centre

for health and social care



Breast Screening Programme, England 2007-08

28 January 2009

Summary

Breast Screening Programme, England 2007-08

Women between the ages of 50 and 70 are invited for regular breast screening (every three years) under a national programme. This is intended to detect breast cancer at an early stage.

At 31st March 2008:

Among women aged 53-64

- Over three-quarters (76.7%) had been screened at least once in the previous three years, an increase from last year (76.0%). This is the fourth consecutive increase.
- In 124 (113 last year) of the 152 Primary Care Organisations, the coverage was 70.0% or higher.

Among women aged 53-70

- Over three quarters (75.9%) had been screened at least once in the previous three years (up from 73.8% last year).
- In 121 (100 last year) of the 152 Primary Care Organisations, the coverage was 70.0% or higher.
- Coverage among those women aged 65-70 (in the extended part of the programme) has now reached 73.9% an increase of 6.1 percentage points from 31st March 2007, as the programme continues to be rolled out.

2007-08

- Over 2.2 million women (aged 45 and over) were invited for screening, an increase of 5.0% over last year and 52.5% more than ten years ago.
- Over 1.7 million women (aged 45 and over) were screened within the programme, an increase of 4.3% over 2006-07. The last ten years have seen the programme grow by 45.2% from 1.2 million in 1997-98.

2007-08 continued

- There were 14,110 cases of cancer diagnosed in women screened aged 45 and over, an increase of 5.0% over the previous year (13,443) and double the number in 1997-98 (6,914).
- Of all cancers diagnosed, 11,110 (78.7%) were invasive and of these 5,814 (52.3%) were 15mm or less which could have not been detected by hand.

Among women aged 50-64

- Just over 1.7 million were invited for screening in 2007-08. Of these 73.6% were screened.
- There were 7.2 cancers detected per 1000 women screened which has changed little over the past five years.

Among women aged 50-70

- Nearly 2.2 million were invited for screening in 2007-08. Of these 73.2% were screened.
- There were 8.0 cancers detected per 1000 women screened.

Previously only women aged 50-64 were eligible to be invited as part of the NHS Breast Screening Programme. However, this was extended in April 2001 to include women aged 65-70. The last screening unit began inviting older women in April 2006. While the majority of PCOs are now inviting all women aged 50-70 full national coverage should be achieved next year. This bulletin, where appropriate will present data for women in both age groups 50-64 and 50-70.

Contents

Chapter		Page
1	Introduction	5
2	Analysis and Commentary	6
3	Definitions	16
4	Further Information	18
	Index to tables	19
	Tables	20
	Appendix A: Form KC62	48
	Appendix B: Form KC63	53

Introduction

Breast Screening – a general overview

1.1 Information on the NHS Breast Screening Programme is collected on the following NHS Information Centre returns:

- KC62 – information on the process and outcomes of the call and re-call system, collected from all breast screening units.
- KC63 – information on the population coverage of the programme, collected from all Primary Care Organisations (PCO).

Data have been collected annually since 1988-89 on the KC62 and since 1994-95 on the KC63.

1.2 National policy for the screening programme is that eligible women aged 50-70 are invited for screening every 3 years. Because the programme is a rolling one which invites women from GP practices (or geographical areas) in a three year cycle, not every woman will receive an invitation as soon as she is 50. However, every woman should receive her first invitation before her 53rd birthday. Women who are over the upper age limit for routine invitations for breast screening are encouraged to make their own appointments at three yearly intervals.

1.3 Previously only women aged 50-64 were eligible to be invited as part of the NHS Breast Screening Programme. However, this was extended in April 2001 to include women aged 65-70. The last screening unit began inviting older women in April 2006. While the majority of PCOs are now inviting all women aged 50-70 full national coverage should be achieved next year.

This bulletin, where appropriate, will present data for both the 50-64 and 50-70 age groups.

Analysis and Commentary

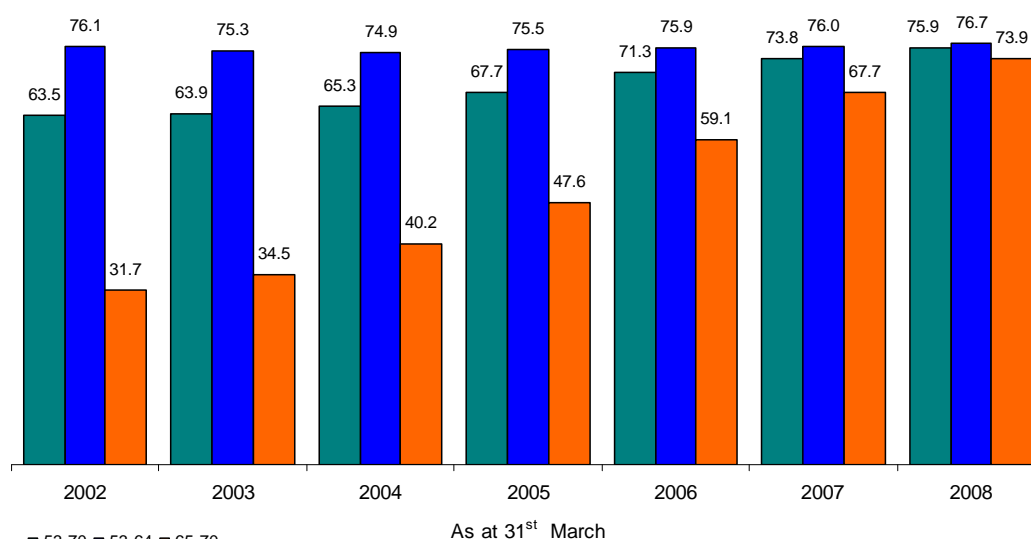
2.1 Overview (Table 1)

2.1.1 Just over 1.7 million women aged 50-64 were invited for screening in 2007-08. In the past decade there has been a 25% increase in the number of women in this age range invited and a 21% increase in the number screened. Uptake (see definitions) for this age group was 73.6% in 2007-08

2.1.2 In April 2001 the breast screening programme was extended to include routine invitations to women aged 65-70. In 2007-08 just under 2.2 million women aged 50-70 were invited for screening. Uptake for this age group was 73.2% in 2007-08 compared with 74.6% in 2002-03 at which time very few women aged 65-70 were invited.

2.1.3 In 2007-08, cancer was detected through the screening programme in 9,175 women aged 50-64. This is a rate of 7.2 cancers per 1,000 women screened. This has gradually increased since 1997-98 when the rate was 5.6. In women aged 50-70 cancer was detected through the screening programme in 13,066 women; a rate of 8.0 per 1,000 women screened.

Figure 1: Percentage coverage⁽¹⁾ for women aged 53-70, 53-64 and 65-70, England 2002-2008



■ 53-70 ■ 53-64 ■ 65-70

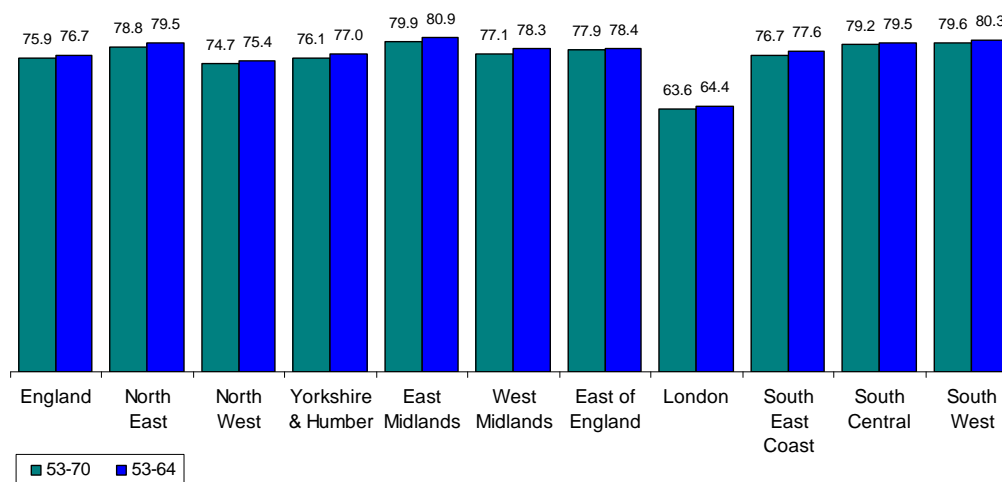
⁽¹⁾ Coverage (less than three years since last test)

Source: KC63 The NHS Information Centre

© Data prior to 2005, re-used with the permission of the Department of Health

2.2 Coverage (Tables 2 & 11)

Figure 2: Percentage coverage⁽¹⁾ of women aged 53-70 and 53-64 in England by SHA, 31st March 2008



⁽¹⁾ Coverage (less than 3 years since last test)
Source: KC63 The NHS Information Centre

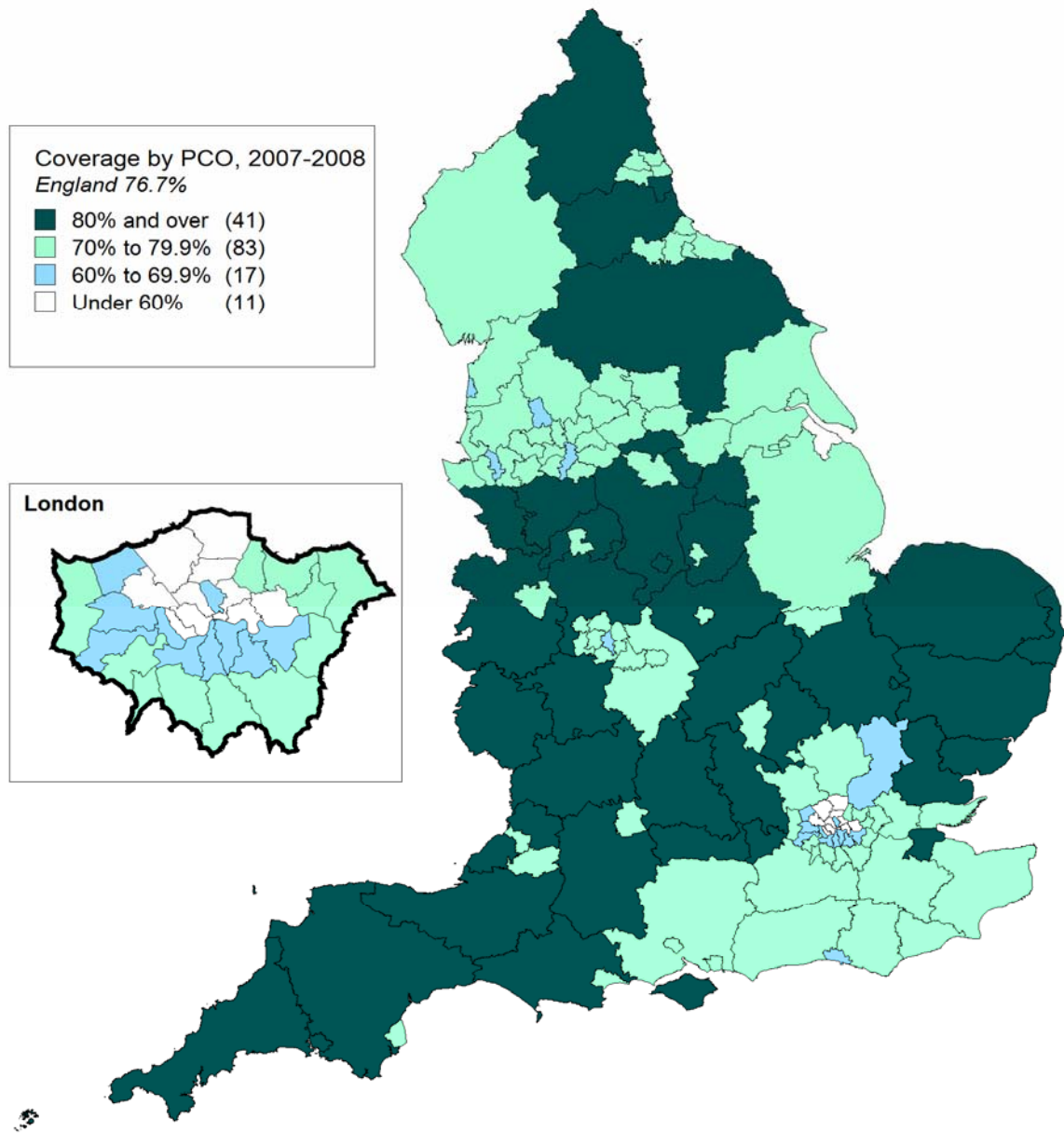
2.2.1 Coverage among women aged 53-64

- Nationally the reported coverage was 76.7% at 31st March 2008. **(Figure 1)**
- All but one region (London) reported coverage above 70%. East Midlands reported the highest coverage with 80.9%. **(Figure 2)**
- At PCO level 124 out of 152 PCOs reported coverage above 70% of which 41 reported coverage above 80%. Eleven PCOs reported coverage below 60%. **(Figure 3)**

2.2.2 Coverage among women aged 53-70

- Nationally the reported coverage was 75.9% at 31st March 2008.
- All but one region (London) reported coverage above 70%. East Midlands reported the highest coverage with 79.9%.
- At PCO level 121 out of 152 PCOs reported coverage of 70% of which 35 reported coverage above 80%. Fourteen PCOs reported coverage below 60%.

Figure 3 - Breast screening: Coverage of women aged 53-64 for England by Primary Care Organisation, 2007-08



Data Sources: ONS Boundary Files 2006,
NHS Information Centre KC63

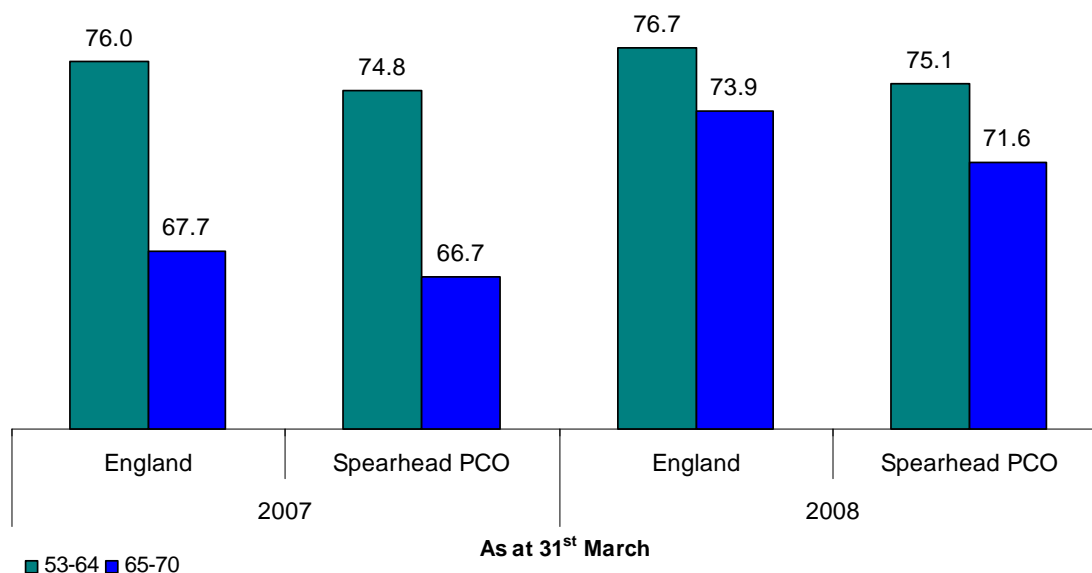
Reproduced by permission of Ordnance Survey
on behalf of HMSO. All rights reserved.
Ordnance Survey Licence Number 100044406.
Crown copyright and database right 2009.

©The Health and Social Care Information Centre

2.2.3 Coverage in Spearhead PCOs (Table 11)

- Mirroring the national trend overall, coverage among Spearhead PCOs (see definitions) has increased since last year. Among women aged 53-64 coverage was 75.1% at 31st March 2008 compared with 74.8% in 2007. Among women aged 65-70 the corresponding figures were 71.6% in 2008 and 66.7 in 2007 (See Figure 4).
- Among women aged 53-64, 46 (44 in 2007) out of 62 Spearhead PCOs reported coverage above 70% of which 8 (11 in 2007) reported coverage above 80%. Five reported coverage below 60% (6 in 2007).
- Among women aged 53-70, 45 (38 in 2007) Spearhead PCOs reported coverage above 70% of which 7 (6 in 2007) reported coverage of above 80%. Eight reported coverage below 60% (6 in 2007).

Figure 4: Percentage coverage⁽¹⁾ for women aged 53-64 and 65-70, England and English Spearhead PCOs, 2007-2008



(1) Coverage (less than 3 years since last test)

Source: KC63 The NHS Information Centre

2.3 Uptake of Invitations for Screening (Tables 3, 4, 5, 12 & 13)

2.3.1 Invitations among women aged 50-64

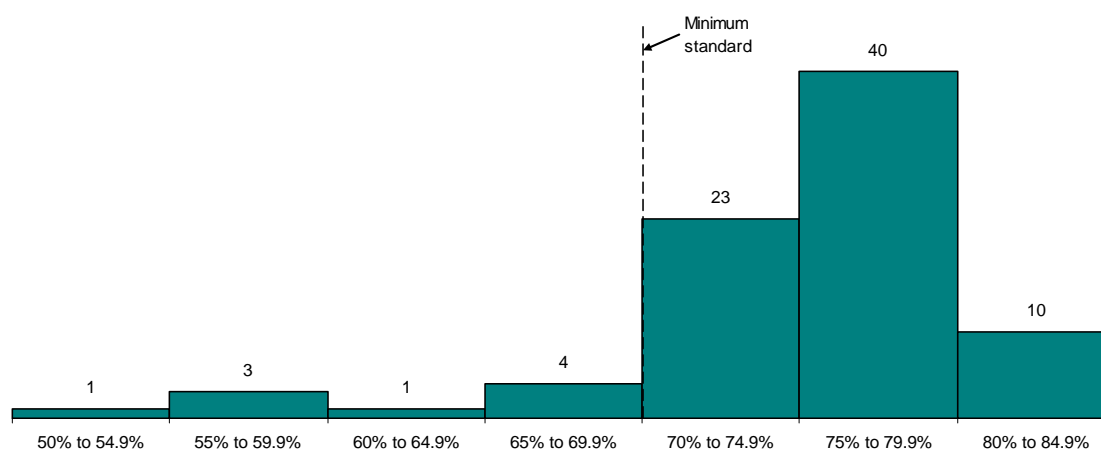
2.3.2 In 2007-08 around 1.7 million women aged 50-64 were invited for screening. This can be shown by invitation type:

- First ever invitations accounted for 18.7%.
- Second or subsequent invitations to women who had not previously attended screening accounted for 10.7%.
- Routine recalls accounted for 62.9% (for women last screened within 5 years).
- Previously attended, but more than 5 years ago, accounted for 7.7%.
- Early recalls accounted for about 0.1% of invitations.

2.3.2 Uptake among women aged 50-64

Of the 82 screening units in England, 10 recorded uptake rates of 80% or over and a further 63 recorded rates between 70% and 80%. Uptake rates below 70% were recorded by 9 units, 6 of which were in the London region. **(Figure 5)**

Figure 5: Uptake for women aged 50-64 by Breast Screening Unit, England, 2007-08

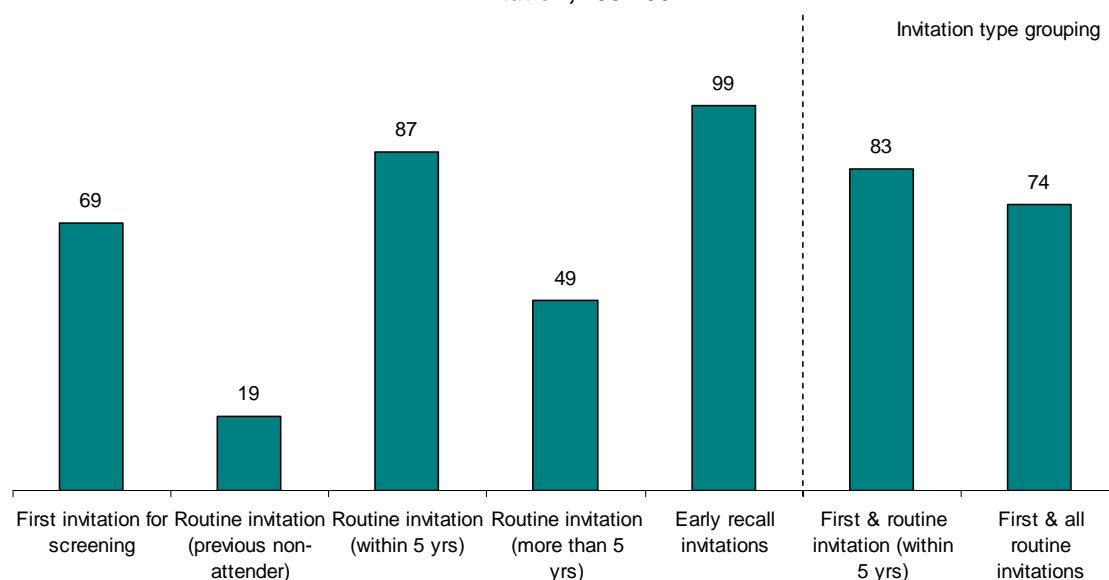


Source: KC62 The NHS Information Centre

Uptake rates varied considerably according to the type of invitation (**Figure 6**):

- 69% of women receiving their first invitation were screened.
- 87% of women who had already been screened and received a routine invitation were screened.
- 19% of women who received a routine invitation, having failed to respond to a previous invitation, were screened.

Figure 6: Percentage uptake of invitations for women aged 50-64 by type of invitation, 2007-08



Source: KC62 The NHS Information Centre

2.3.3 Invitations among women aged 50-70

In 2007-08 around 2.2 million women aged 50-70 were invited for screening. This can be shown by invitation type:

- First ever invitations accounted for 15.0%
- Second or subsequent invitations to women who had not previously attended screening accounted for 10.3%

- Routine recalls accounted for 63.4% (for women last screened within 5 years).
- Previously attended, but more than 5 years ago, accounted for 11.3%.
- Early recalls accounted for about 0.1% of invitations.

2.3.4 Uptake among women aged 50-70

Of the 82 screening units, 7 recorded uptake rates of 80% or over and a further 65 recorded rates between 70% and 80%. Uptake rates below 70% were recorded by 10 units, 6 of which were in the London region

Uptake rates varied considerably according to the type of invitation:

- 68% of women receiving their first invitation were screened.
- 87% of women who had already been screened and received a routine invitation were screened.
- 17% of women who received a routine invitation, having failed to respond to a previous invitation, were screened.

2.4 Outcome of Screening (Tables 5, 6 & 7)

2.4.1 Over 1.7 million women (aged 45 and over) were screened in 2007-08; around three quarters of these were aged 50-64. Of the total number screened, about 2% were aged between 45 and 49, a further 20% were aged 65 to 70 and 3% were aged over 70 (including both those invited and self/GP referrals).

2.4.2 Self/GP referrals (aged 45 and over) accounted for 85,722 women screened, an increase of nearly 2% over last year. Around 60% of these were women aged over 70, compared with 56% last year. There is a continuing decrease in self referrals amongst women aged 65-70 since the extension of the programme to include invitations to this age group. Three years ago these women accounted for around 41% of self/GP

referrals; last year this figure was 14% and it has continued to fall to just 11% in 2007-08.

2.4.3 Similar to last year, women of all ages attending for the first time (i.e. in the prevalent round) were almost three times as likely to be referred for assessment as those who had been previously screened in the last 5 years (i.e. in the incident round).

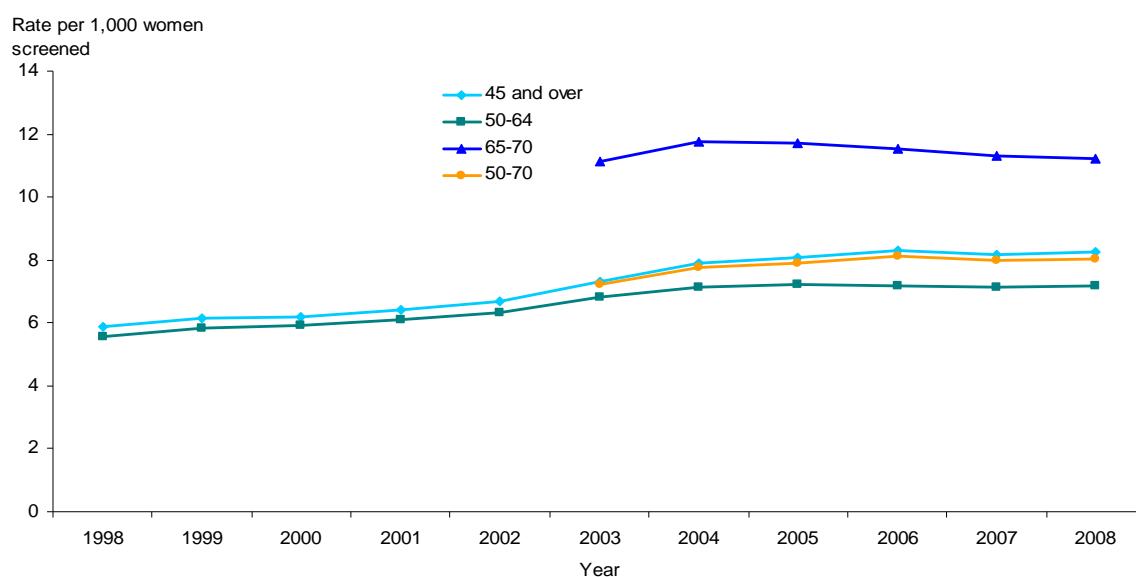
2.4.4 Of all women referred for assessment (aged 45 and over), whether in the prevalent round or the incident round, nearly 41% underwent cytology and/or core biopsy and about 1 in 30 were referred for open biopsy (or about 3%).

2.4.5 Amongst women in the prevalent round nearly 3% of those who were referred for assessment were recommended for early recall compared with nearly 2% for the incident round.

2.4.6 A small proportion of the women referred for assessment as a result of an early recall invitation were again recommended for early recall (6%).

2.5 Cancers detected (Tables 8, 9 & 10)

Figure 7: Cancer detection rate by age in England, 1997-98 to 2007-08



Due to the programme expansion, data for 65-70 and 50-70 prior to 2002-03 is not applicable

Source: KC62 The NHS Information Centre

© Data prior to 2005, re-used with the permission of the Department of Health.

2.5.1 A total of 14,110 cancers from women aged 45 and over were detected by the screening programme in 2007-08, a rate of 8.2 per 1,000 women screened. This overall rate was the same as that in 2006-07 (8.2). In the prevalent round the rate of cancers detected by the screening programme amongst women aged 45 and over decreased since 2006-07 from 8.0 to 7.7 cases per 1000 women screened. However, in the incident round the rate slightly increased from 7.2 to 7.4 cases per 1000 women screened

2.5.2 In the last 5 years the number of cancers detected by the programme in the extended age group (65-70) has nearly trebled to 3,891 cancers in 2008. This reflects the increasing number of women being screened in this age group.

2.5.3 Of all the cancers detected in women aged 45 and over, 2,970 (21%) were non-invasive or micro-invasive and a further 5,814 (41%) were invasive, but small i.e. less than 15mm.

2.5.4 In women aged 50-64, the proportion of non-invasive and micro-invasive was highest in the prevalent round at 27%, compared with 20% in the incident round. Small cancers accounted for 46% of all invasive cancers found in the prevalent round but accounted for a greater proportion (54%) in the incident round.

2.5.5 It is known that the incidence of breast cancer rises with age and this pattern was observed with cancers detected by the screening programme. The cancer detection rate in 2007-08 was just over 7 per 1,000 for women aged 50-64 and 8 per 1000 women aged 50-70. Detection rates were greatest amongst women aged over 70 at just below 16 per 1,000 women. **(Figure 7)**

2.5.6 The cancer detection rate was lower in the incident round for women who regularly attend screening. As expected the cancer detection rate was higher in the early recalls. **(Table A)**

Table A: NHS Breast Screening Programme: cancer detection rate by age and type of invitation, 2007-08

Type of invitation	rate per 1000 women screened									
	45 and over	50-64	50-70	45-49	50-54	55-59	60-64	65-70	Over 70	
Total	8	7	8	7	6	7	9	11	16	
1st invitation for routine screening	7	7	7	7	7	7	(8)	(15)	(0)	
Routine invitation to previous non-attenders	11	10	11	(0)	7	12	13	25	(0)	
Routine invitation to previous attenders (Last screen within 5 years)	7	7	7	(0)	5	6	8	10	(16)	
Routine invitation to previous attenders (Last screened more than 5 years previously)	13	10	13	(0)	6	9	11	16	(30)	
Early recalls	(30)	(25)	(30)	(0)	(13)	(33)	(41)	(49)	(28)	
Self / GP referral (no previous screen)	13	10	11	(14)	8	14	(14)	(21)	22	
Self / GP referral (within 5 years)	12	10	10	(0)	5	9	13	11	13	
Self / GP referral (> 5 years)	22	10	16	(0)	(0)	(12)	(10)	(23)	24	

Source: KC62 Part 1 and 3 Tables A to F2

Rates shown in brackets are based on fewer than 2000 women screened

2.6 Selected diagnostic and outcome statistics (Tables 14 and 15)

2.6.1 Data are presented giving information about the diagnostic process and outcomes of each local screening programme. The screening programmes vary enormously in size with the smallest screening just under 5,000 women (all ages) per year and the largest over 45,000. Among the 50-64 age group numbers screened range from nearly 4,000 women per year for the smallest unit and the largest over 34,000. For the 50-70 age group this ranges from nearly 5,000 to over 43,000.

2.6.2 The prevalent round accounts for only one fifth (20%) of women aged 50-64 screened (**Table 6**) and only 16% of women aged 50-70. Rates for smaller units, particularly for the prevalent round, are often based on very small numbers of cases. Such rates may be subject to considerable fluctuation from year to year and caution should be exercised in interpreting some of the data.

Definitions

3.1 Coverage is the proportion of women resident and eligible* at a particular point in time (31st March 2008 in this instance) who have had a test with a recorded result at least once in the previous 3 years. (*Excluding those ineligible i.e. those who have had a bilateral mastectomy). Currently coverage is best assessed using the 53-64 age group as women may be called at any time between their 50th and 53rd birthdays.

3.2 Uptake is the proportion of women invited for screening, over the year, for whom a screening test result is recorded.

3.3 Prevalent screening is that of women being screened for the first time within the breast screening programme. In this statistical bulletin, prevalent round figures relate to first invitations for routine screening and routine invitations to previous non-attendees.

3.4 Incident screening is that of women previously screened within the breast screening programme. In this statistical bulletin, incident round figures relate only to routine invitations to previous attendees last screened within 5 years

3.5 Early recall is a non-routine invitation at less than the standard screening interval.

3.6 Non- or micro-invasive cancer is a cancer which demonstrates no or only very slight invasion into adjacent tissues by malignant cells of a carcinoma in situ.

3.7 Invasive cancer is cancer which has spread beyond the layer of tissue in which it developed and is growing into surrounding, healthy tissues.

3.8 The extension to the breast screening programme for routine invitations to women aged 65-70 commenced in April 2001. The last unit began inviting women in April 2006, full coverage should be achieved by 2008-09. The data include some women aged 45-49. The vast majority of these are women aged 49 who have been called for their first routine screening a few months before their 50th birthday.

It was announced in December 2007 that the age at which women are screened has been extended again incorporating nine screening rounds for women between the ages of 47 to 73 years of age, with a guarantee that women will have their first screening before the age of 50. Again this extension will occur in phases across the service and full implementation is expected by the end of 2012. This extension is in accordance with the recommendations outlined in the recent Cancer Reform Strategy (published December 2007), details of which are available on the following website;

http://www.dh.gov.uk/en/Publicationsandstatistics/Publications/PublicationsPolicyAndGuidance/dh_081006

3.9 Spearhead PCOs are areas with the worst health and deprivation in England based on indices of deprivation, including premature mortality from cancer and cardiovascular diseases, and life expectancy. These are identified at Local Authority (LA) level. Spearhead PCOs are those which overlap geographically with the Spearhead LAs. For a minority of these PCOs (14 out of 62), only part of the PCO area overlaps with the Spearhead LA, for the remaining 48 the whole PCO area overlaps with the Spearhead LAs. For further information on Spearhead PCOs and how they are determined please visit the following Department of Health website;

http://www.dh.gov.uk/en/Publicationsandstatistics/Lettersandcirculars/Dearcolleagueletters/DH_4138963

3.10 For definitions of further medical terminology please visit the Cancer Screening Programmes website at www.cancerscreening.nhs.uk

3.11 In the tables:

.. = Not available

- = Zero

Further information

The NHS Information Centre
1 Trevelyan Square
Boar Lane
Leeds
LS1 6AE

Telephone: 0845 300 6016

Email: enquiries@ic.nhs.uk

Media enquiries should be made to the media relations manager.

This bulletin can be found on The NHS Information Centre website at:

<http://www.ic.nhs.uk/statistics-and-data-collections/screening/breast-cancer>

Copies of previous publications can also be accessed via this link.

Further information about breast screening is available from the NHS Cancer Screening Programmes:

<http://www.cancerscreening.nhs.uk/index.html>

INDEX TO TABLES

Table number	Description
1	Summary statistics on breast cancer and the NHS Breast Screening Programme, 1998 to 2008
2	Test status and coverage of women by age, 31 March 2008
2a	Test status and coverage of women aged 53-64 and 53-70 by SHA, 31 March 2008
3	Uptake of invitations to screen for women aged 50-64 and 50-70 by SHA, 1998-99 to 2007-08
3a	Uptake of invitations to screen for women aged 50-64 and 50-70 by type of invitation and SHA, 2007-08
4	Number of women invited and uptake of invitations to screen, by age and type of invitation, 2007-08
5	Number of women screened by age and type of invitation, 2007-08
6	Women screened by age, type of invitation and outcome, 2007-08
7	Women screened by age, SHA and outcome, 2007-08
7a	Women screened by age and outcome, 2007-08
8	Women screened and cancers detected by age and type of invitation, 2007-08
9	Women screened and cancers detected by age and SHA, 2007-08
9a	Women screened and cancers detected by age, 2007-08
10	Women aged 45 and over, with cancer diagnosed, by size of cancer and age, 2007-08
10a	Women aged 50-64 and 50-70, with cancer diagnosed, by invitation type and size of cancer, 2007-08
11	Coverage of women aged 53-64 by Primary Care Organisation at 31 March 2007 and 2008
11a	Coverage of women aged 53-70 by Primary Care Organisation at 31 March 2007 and 2008
12	Uptake by women aged 50-64 of invitations to screen, by unit, 1998-99 to 2007-08
12a	Uptake by women aged 50-70 of invitations to screen, by unit, 2002-03 to 2007-08
13	Uptake of women aged 50-64 by type of invitation and unit, 2007-08
13a	Uptake of women aged 50-70 by type of invitation and unit, 2007-08
14	Selected diagnostic and outcome statistics for women aged 50-64, by unit 2007-08
14a	Selected diagnostic and outcome statistics for women aged 50-70, by unit 2007-08
15	Selected diagnostic and outcome statistics for women aged 50-64, by unit 2007-08
15a	Selected diagnostic and outcome statistics for women aged 50-70, by unit 2007-08

Table 1: Summary statistics on breast cancer and the NHS Breast Screening Programme, 1998 to 2008

England												
	units	1998	1999	2000	2001	2002	2003	2004	2005	2006	2007	2008
Breast Screening programme data												
Coverage ⁽¹⁾												
Women aged 53-64	%	76.1	75.3	74.9	75.5	75.9	76.0	76.7
Women aged 65-70	%	31.7	34.5	40.2	47.6	59.1	67.7	73.9
Women aged 53-70	%	63.5	63.9	65.3	67.7	71.3	73.8	75.9
Women aged 50-64	%	66.4	67.7	69.3	70.2	69.8	69.3	69.0	69.5	69.9	69.9	70.3
Uptake ⁽²⁾												
Women aged 50-64	%	75.3	76.2	75.5	75.3	75.6	74.9	75.5	75.0	75.4	74.1	73.6
Women aged 65-70	%	69.1	71.9	71.0	72.5	71.7	71.6
Women aged 50-70	%	74.6	75.2	74.4	74.8	73.6	73.2
Invitations and outcomes ⁽³⁾												
Women invited (50-64)	millions	1.37	1.40	1.52	1.48	1.45	1.51	1.52	1.55	1.59	1.64	1.70
Women invited (65-70)	millions	0.09	0.17	0.25	0.42	0.43	0.47
Women invited (50-70)	millions	1.60	1.69	1.80	2.02	2.07	2.17
Women invited (45 and over)	millions	1.46	1.49	1.62	1.58	1.54	1.65	1.73	1.84	2.06	2.12	2.22
Women screened (50-64)	millions	1.06	1.10	1.18	1.15	1.12	1.16	1.18	1.19	1.23	1.24	1.28
Women screened (65-70)	millions	0.12	0.18	0.22	0.33	0.32	0.35
Women screened (50-70)	millions	1.28	1.35	1.41	1.55	1.56	1.63
Women screened (45 and over)	millions	1.18	1.23	1.32	1.30	1.27	1.35	1.42	1.48	1.63	1.64	1.71
Women referred for assessment (50-64)	thousands	56.1	58.5	61.8	60.2	59.4	59.7	60.1	56.7	56.6	56.3	58.9
Women referred for assessment (65-70)	thousands	5.5	8.1	10.0	13.9	13.7	14.2
Women referred for assessment (50-70)	thousands	65.2	68.2	66.7	70.5	70.1	73.1
Women referred for assessment (45 and over)	thousands	63.5	66.2	69.9	68.4	67.9	69.6	73.0	71.4	75.4	75.5	78.9
Women with cancer detected (50-64)	thousands	5.9	6.4	7.0	7.0	7.1	7.9	8.4	8.6	8.8	8.8	9.2
Women with cancer detected (65-70)	thousands	1.3	2.1	2.6	3.8	3.7	3.9
Women with cancer detected (50-70)	thousands	9.2	10.5	11.1	12.6	12.5	13.1
Women with cancer detected (45 and over)	thousands	6.9	7.6	8.2	8.3	8.5	9.8	11.2	12.0	13.5	13.4	14.1
Cancers detected per 1,000 women screened (50-64)	rate	5.6	5.8	5.9	6.1	6.3	6.8	7.1	7.2	7.2	7.1	7.2
Cancers detected per 1,000 women screened (65-70)	rate	11.1	11.8	11.7	11.6	11.3	11.2
Cancers detected per 1,000 women screened (50-70)	rate	7.2	7.7	7.9	8.1	8.0	8.0
Cancers detected per 1,000 women screened (45 and over)	rate	5.9	6.1	6.2	6.4	6.7	7.3	7.9	8.1	8.3	8.2	8.2
Breast Cancer registration data ⁽⁴⁾⁽⁶⁾												
Registrations in women aged 50-64	thousands	11.9	12.9	12.7	13.1	13.2	13.9	13.9	13.5	13.3
Registrations in women of all ages	thousands	33.8	35.5	34.8	35.5	35.3	37.5	37.7	38.5	38.0
Registrations per 100,000 popn (50-64)	rate	289	305	295	300	300	313	310	298	289
Registrations per 100,000 popn (all ages)	rate	115	120	117	118	117	123	123	124	121
Breast Cancer mortality data ⁽⁵⁾⁽⁶⁾ England												
Deaths (50-64)	thousands	2.9	2.8	2.8	2.7	2.7	2.6	2.6	2.6	2.6	2.5	..
Deaths (50-70)	thousands	4.2	4.0	4.0	3.9	3.8	3.7	3.7	3.8	3.7	3.6	..
Deaths (all ages)	thousands	11.3	11.1	10.9	10.9	10.8	10.5	10.3	10.3	10.2	10.0	..
Deaths per 100,000 popn (50-64)	rate	69	66	65	62	60	59	57	58	57	54	..
Deaths per 100,000 popn (50-70)	rate	76	72	72	69	67	64	64	64	62	60	..
Deaths per 100,000 popn (all ages)	rate	33	32	31	31	30	29	28	28	28	27	..

⁽¹⁾ Source: Form KC63; data are as at 31 March

⁽²⁾ Source: Form KC62, (Part 1, Tables A, B, C1 & C2); Data are for 12 months ending 31 March

⁽³⁾ Source: Form KC62, (Parts 1, 2 & 3, Tables A - F2); Data are for 12 months ending 31 March

⁽⁴⁾ Source: National Cancer Intelligence Centre, ONS; data are for year commencing 1 January

Rates for all ages are Directly Age Standardised Rates using the European Standard Population (DAS(E))

⁽⁵⁾ National Centre for Health Outcomes Development using source mortality extracts from ONS; data are registrations for years commencing 1 January

Data for years 1998 and 2000 are based on ICD-9 coding of the cause of death and have been adjusted for comparability to years 1999 and 2001 to 2007 which are based on ICD-10.

Rates for all ages are Directly Age Standardised Rates using the European Standard Population (DAS(E))

⁽⁶⁾ Some data for breast cancer registrations and mortality have been revised from previous publications and are subject to change

Table 2: NHS Breast Screening Programme: test status and coverage of women by age band, 31 March 2008

England		thousands/percentages				
Age at test	Number of women registered	Number ineligible	Women never screened ⁽¹⁾		Number of women less than 3 years since last test	Coverage (less than 3 years since last test) (%)
			number	%		
50-64	4,696.5	4.3	979.8	20.9	3,299.4	70.3
65-70	1,403.2	2.0	127.0	9.1	1,035.3	73.9
53-64	3,717.8	3.9	457.0	12.3	2,847.8	76.7
53-70	5,120.9	5.9	584.0	11.4	3,883.1	75.9
45-49	1,834.1	0.0	1,822.3	99.4	10.7	0.6
50-52	978.7	0.4	522.8	53.4	451.6	46.2
53-54	620.4	0.5	117.0	18.9	468.0	75.5
55-59	1,547.4	1.5	194.3	12.6	1,181.3	76.4
60-64	1,550.0	2.0	145.7	9.4	1,198.5	77.4
65-69	1,177.7	1.7	105.5	9.0	877.2	74.6
70	225.4	0.3	21.5	9.5	158.2	70.3
71-74	825.2	0.7	99.2	12.0	241.0	29.2
75 and over	2,407.9	0.3	1,417.4	58.9	75.1	3.1

Source: KC63

⁽¹⁾ This includes the number of women selected and never selected for screening.
Copyright © 2009, The Health and Social Care Information Centre. All rights reserved

Table 2a: NHS Breast Screening Programme: test status and coverage of women aged 53-64 and 53-70 by SHA, 31 March 2008

		thousands/percentages				
Strategic Health Authority	Number of women registered	Number ineligible	Women never screened ⁽¹⁾		Number of women less than 3 years since last test	Coverage (less than 3 years since last test) (%)
			number	%		
Women aged 53-64						
England	3,717.8	3.9	457.0	12.3	2,847.8	76.7
North East	194.8	0.3	21.5	11.1	154.7	79.5
North West	512.4	0.5	64.6	12.6	386.1	75.4
Yorkshire & the Humber	376.3	0.5	43.9	11.7	289.2	77.0
East Midlands	329.7	0.4	30.3	9.2	266.5	80.9
West Midlands	396.4	0.3	46.8	11.8	310.0	78.3
East of England	430.6	0.4	48.5	11.3	337.1	78.4
London	441.4	0.3	90.7	20.6	284.2	64.4
South East Coast	330.2	0.4	37.3	11.3	256.0	77.6
South Central	290.5	0.3	29.9	10.3	230.8	79.5
South West	415.4	0.5	43.6	10.5	333.2	80.3
Women aged 53-70						
England	5,120.9	5.9	584.0	11.4	3,883.1	75.9
North East	269.5	0.4	27.6	10.3	212.1	78.8
North West	711.2	0.8	82.8	11.7	530.6	74.7
Yorkshire & the Humber	519.7	0.8	56.4	10.9	394.8	76.1
East Midlands	452.4	0.6	38.6	8.5	360.9	79.9
West Midlands	551.0	0.5	60.7	11.0	424.3	77.1
East of England	591.4	0.6	61.7	10.4	460.2	77.9
London	599.7	0.4	115.6	19.3	381.1	63.6
South East Coast	455.4	0.6	47.4	10.4	348.9	76.7
South Central	395.9	0.5	37.5	9.5	313.1	79.2
South West	574.6	0.7	55.6	9.7	457.1	79.6

Source: KC63

⁽¹⁾ This includes the number of women selected and never selected for screening.
Copyright © 2009, The Health and Social Care Information Centre. All rights reserved

Table 3: NHS Breast Screening Programme: uptake of invitations to screen⁽¹⁾ for women aged 50-64 and 50-70 by SHA, 1998-99 to 2007-08

Strategic Health Authority	percentages									
	1998-99	1999-2000	2000-01	2001-02	2002-03	2003-04	2004-05	2005-06	2006-07	2007-08
Women aged 50-64										
England	76.2	75.5	75.3	75.6	74.9	75.5	75.0	75.4	74.1	73.6
North East	79.7	80.6	79.3	79.3	78.5	78.3	78.0	78.3	78.3	76.6
North West	76.6	75.4	75.1	76.1	75.3	75.1	74.8	74.9	73.8	72.8
Yorkshire & the Humber	76.9	77.1	78.6	76.2	76.5	78.4	76.5	77.3	77.9	75.0
East Midlands	81.4	81.2	80.8	81.7	80.5	80.6	80.4	79.6	78.2	79.1
West Midlands	77.3	76.8	76.5	77.2	76.9	76.5	76.1	76.3	75.7	74.8
East of England	77.3	76.8	75.7	77.1	77.0	76.7	77.0	77.9	76.5	77.0
London	62.9	62.0	62.2	63.3	61.3	62.7	61.8	62.3	60.6	61.2
South East Coast	77.8	75.9	75.6	76.4	76.3	77.5	77.3	77.3	74.6	74.5
South Central	79.4	78.3	78.9	77.3	77.3	78.1	75.9	77.3	77.3	75.2
South West	79.2	78.2	78.1	78.0	77.3	78.0	78.2	78.8	75.8	76.1
Women aged 50-70										
England	74.6	75.2	74.4	74.8	73.6	73.2
North East	78.4	77.1	76.3	77.1	77.5	75.9
North West	74.8	74.5	74.0	74.0	73.0	72.3
Yorkshire & the Humber	76.0	77.9	75.9	76.6	77.3	74.5
East Midlands	80.2	80.2	79.9	79.0	77.6	78.6
West Midlands	76.4	75.8	75.1	75.6	75.0	74.3
East of England	76.8	76.3	76.3	77.2	75.9	76.8
London	61.0	62.5	61.3	61.8	60.3	60.6
South East Coast	76.2	77.3	76.9	77.1	74.4	74.3
South Central	77.2	78.0	75.6	77.0	77.1	74.9
South West	77.1	77.7	78.0	78.3	75.5	75.6

Source: KC62 (Part 1, Tables A, B, C1 and C2)

Notes:
⁽¹⁾ First invitations and routine invitations

© Data prior to 2005, re-used with the permission of the Department of Health.
 Copyright © 2009, The Health and Social Care Information Centre. All rights reserved

Table 3a: NHS Breast Screening Programme: uptake of invitations to screen for women aged 50-64 and 50-70 by type of invitation and SHA, 2007-08

Strategic Health Authority	percentages						
	Invitation type					Invitation type grouping	
	First invitation for screening	Routine invitation (previous non-attender)	Routine invitation (within 5 yrs)	Routine invitation (more than 5 yrs)	Early recall invitations	First & routine invitation (within 5 yrs)	First & all routine invitations ⁽¹⁾
Women aged 50-64							
England	69.1	19.3	87.2	49.0	99.1	83.1	73.6
North East	74.8	19.2	88.7	47.6	100.0	85.5	76.6
North West	69.5	18.1	87.4	47.7	99.5	83.1	72.8
Yorkshire & the Humber	71.6	19.9	88.3	45.0	99.2	84.7	75.0
East Midlands	75.8	21.2	89.6	51.0	100.0	86.8	79.1
West Midlands	71.2	18.5	88.2	46.3	99.2	84.7	74.8
East of England	72.2	21.7	89.0	56.0	99.5	85.1	77.0
London	56.3	17.3	79.4	40.4	100.0	72.5	61.2
South East Coast	69.4	20.3	86.9	52.9	99.4	83.1	74.5
South Central	71.0	21.9	87.5	49.8	99.0	83.8	75.2
South West	70.5	19.4	88.3	53.9	97.9	84.6	76.1
Women aged 50-70							
England	68.1	17.0	87.3	51.9	99.2	83.6	73.2
North East	74.4	16.3	88.6	42.3	100.0	86.0	75.9
North West	68.9	15.7	87.4	49.8	99.6	83.7	72.3
Yorkshire & the Humber	70.8	17.6	88.3	53.4	98.2	85.2	74.5
East Midlands	75.1	18.9	89.5	53.2	100.0	87.1	78.6
West Midlands	70.4	16.1	88.1	53.5	99.4	85.0	74.3
East of England	71.5	18.9	89.2	53.5	99.6	85.9	76.8
London	54.6	15.6	79.6	43.6	100.0	73.1	60.6
South East Coast	68.1	18.3	87.1	58.8	99.6	83.5	74.3
South Central	70.1	19.5	87.7	53.4	98.7	84.4	74.9
South West	69.3	16.9	88.3	55.1	98.4	85.0	75.6

Source: KC62 (Part 1, Tables A to D)

⁽¹⁾ This is the grouping used in Table 3 above

Copyright © 2009, The Health and Social Care Information Centre. All rights reserved

Table 4: NHS Breast Screening Programme: number of women invited and uptake of invitations to screen, by age band and type of invitation, 2007-08

England											numbers/percentages
Type of Invitation	Aged 45 & over	Aged 50-64	Aged 50-70	Age band							
				45-49	50-52	53-54	55-59	60-64	65-70	Over 70	
Invitations (numbers)											
Total number of women invited	2,223,834	1,701,889	2,172,638	49,812	346,966	232,655	573,032	549,236	470,749	1,384	
1st invitation for routine screening	374,925	318,054	325,196	49,679	287,484	11,957	11,099	7,514	7,142	50	
Routine invitation to previous non-attenders	223,222	181,856	223,024	41	13,150	44,864	73,277	50,565	41,168	157	
Routine invitation to previous attenders (Last screen within 5 years)	1,377,808	1,069,991	1,377,277	31	42,898	169,384	435,205	422,504	307,286	500	
Routine invitation to previous attenders (Last screen more than 5 years previously)	245,872	130,479	245,248	58	2,901	6,213	53,084	68,281	114,769	566	
Early recalls	2,007	1,509	1,893	3	533	237	367	372	384	111	
Uptake (percentage screened of women invited)											
Total	73.2	73.7	73.2	72.0	72.8	72.0	73.8	74.8	71.6	56.2	
1st invitation for routine screening	68.6	69.1	68.1	72.1	72.8	46.1	27.6	24.7	22.8	14.0	
Routine invitation to previous non-attenders	17.0	19.3	17.0	43.9	33.5	29.7	17.3	9.4	6.9	7.6	
Routine invitation to previous attenders (Last screen within 5 years)	87.3	87.2	87.3	58.1	84.4	85.3	87.2	88.3	87.6	77.0	
Routine invitation to previous attenders (Last screen more than 5 years previously)	51.9	49.0	51.9	58.6	66.9	63.2	51.9	44.8	55.2	46.8	
Early recalls	99.1	99.1	99.2	100.0	99.1	99.6	99.2	98.9	99.2	98.2	

Source: KC62 (Part 1, Tables A to D)
Copyright © 2009, The Health and Social Care Information Centre. All rights reserved

Table 5: NHS Breast Screening Programme: number of women screened by age band and type of invitation, 2007-08

England											thousands
Type of invitation	Aged 45 & over screened	Aged 50-64 screened	Aged 50-70 screened	Age band							
				45-49	50-52	53-54	55-59	60-64	65-70	Over 70	
Total	1,713.2	1,278.8	1,625.1	36.0	257.6	171.6	431.5	418.2	346.3	52.1	
1st invitation for routine screening	257.3	219.8	221.5	35.8	209.4	5.5	3.1	1.9	1.6	0.0	
Routine invitation to previous non-attenders	38.0	35.1	38.0	0.0	4.4	13.3	12.7	4.7	2.8	0.0	
Routine invitation to previous attenders (Last screen within 5 years)	1,202.6	933.2	1,202.2	0.0	36.2	144.4	379.3	373.2	269.1	0.4	
Routine invitation to previous attenders (Last screen more than 5 years previously)	127.6	64.0	127.3	0.0	1.9	3.9	27.6	30.6	63.3	0.3	
Early recalls	2.0	1.5	1.9	0.0	0.5	0.2	0.4	0.4	0.4	0.1	
Self / GP referral (no previous screen)	13.7	10.1	11.0	0.1	4.8	1.9	2.1	1.3	1.0	2.5	
Self / GP referral (within 5 yrs)	57.9	13.0	19.2	0.0	0.3	2.2	5.5	5.0	6.2	38.6	
Self / GP referral (> 5 yrs)	14.2	2.1	4.0	0.0	0.0	0.1	0.8	1.1	1.9	10.2	

Source: KC62 (Part 1, Tables A to F2)
Copyright © 2009, The Health and Social Care Information Centre. All rights reserved

Table 6: NHS Breast Screening Programme: women screened by age band, type of invitation and outcome, 2007-08

England		numbers/percentages					
Type of invitation	Number of women screened	Referred ⁽¹⁾ for assessment		Referred ⁽²⁾ for cytology and/or core biopsy (number)	Referred for open biopsy (number)	Early Recall ⁽³⁾	
		(number)	%			(number)	%
Women aged 45 and over							
Total	1,713,200	78,909	4.6	32,017	2,339	1,858	0.1
1st invitation for routine screening	257,266	22,851	8.9	8,980	757	604	0.2
Routine invitation to previous non-attenders	37,984	3,157	8.3	1,319	113	80	0.2
Routine invitation to previous attenders (Last screen within 5 years)	1,202,633	39,769	3.3	16,237	1,118	787	0.1
Routine invitation to previous attenders (Last screen more than 5 years previously)	127,606	6,833	5.4	3,144	193	171	0.1
Early recalls	1,989	1,743	87.6	219	36	108	5.4
Self / GP referral (no previous screen)	13,656	1,178	8.6	504	32	36	0.3
Self / GP referral (within 5 yrs)	57,863	2,406	4.2	1,116	73	44	0.1
Self / GP referral (> 5 yrs)	14,203	972	6.8	498	17	28	0.2
Women aged 50-64							
Total	1,278,775	58,902	4.6	22,933	1,762	1,396	0.1
1st invitation for routine screening	219,821	19,631	8.9	7,773	654	521	0.2
Routine invitation to previous non-attenders	35,132	2,916	8.3	1,204	105	74	0.2
Routine invitation to previous attenders (Last screen within 5 years)	933,155	30,336	3.3	11,865	858	599	0.1
Routine invitation to previous attenders (Last screen more than 5 years previously)	63,994	3,159	4.9	1,319	84	67	0.1
Early recalls	1,496	1,324	88.5	151	24	83	5.5
Self / GP referral (no previous screen)	10,061	862	8.6	351	25	26	0.3
Self / GP referral (within 5 yrs)	13,045	572	4.4	231	12	21	0.2
Self / GP referral (> 5 yrs)	2,071	102	4.9	39	0	5	0.2
Women aged 50-70							
Total	1,625,063	73,117	4.5	29,544	2,161	1,721	0.1
1st invitation for routine screening	221,452	19,765	8.9	7,833	656	525	0.2
Routine invitation to previous non-attenders	37,954	3,155	8.3	1,319	113	80	0.2
Routine invitation to previous attenders (Last screen within 5 years)	1,202,230	39,753	3.3	16,229	1,117	787	0.1
Routine invitation to previous attenders (Last screen more than 5 years previously)	127,307	6,809	5.3	3,133	193	170	0.1
Early recalls	1,877	1,654	88.1	203	34	101	5.4
Self / GP referral (no previous screen)	11,017	936	8.5	386	28	28	0.3
Self / GP referral (within 5 yrs)	19,225	810	4.2	335	17	23	0.1
Self / GP referral (> 5 yrs)	4,001	235	5.9	106	3	7	0.2

Source: KC62 (Parts 1 and 2, Tables A to F2)

⁽¹⁾ Including women referred for cytology, core biopsy or open biopsy⁽²⁾ Including women referred for open biopsy⁽³⁾ Including all women whose final outcome was early recall, whether after initial screen, assessment, cytology or biopsy (core or open)

Table 7: NHS Breast Screening Programme: women screened by age, SHA and outcome, 2007-08

England		numbers/percentages						
Age band	Strategic Health Authority	Number of women screened	Referred ⁽¹⁾ for assessment		Referred ⁽²⁾ for cytology and/or core biopsy	Referred for open biopsy	Early Recall ⁽³⁾	
			(number)	%			(number)	(number)
45 & over	England	1,713,200	78,909	4.6	32,017	2,339	1,858	0.1
	North East	93,647	3,362	3.6	1,590	120	50	0.1
	North West	238,906	11,175	4.7	4,320	322	248	0.1
	Yorkshire & the Humber	184,897	7,398	4.0	3,568	162	172	0.1
	East Midlands	144,332	6,373	4.4	2,807	173	78	0.1
	West Midlands	183,968	7,772	4.2	3,054	209	165	0.1
	East of England	198,056	9,207	4.6	4,096	328	237	0.1
	London	181,606	9,021	5.0	3,701	279	98	0.1
	South East Coast	155,125	7,237	4.7	2,691	253	267	0.2
	South Central	138,495	7,470	5.4	2,553	202	189	0.1
	South West	194,168	9,894	5.1	3,637	291	354	0.2
50-64	England	1,278,775	58,902	4.6	22,933	1,762	1,396	0.1
	North East	70,766	2,508	3.5	1,172	93	40	0.1
	North West	177,975	8,395	4.7	3,119	246	180	0.1
	Yorkshire & Humber	138,300	5,405	3.9	2,519	131	138	0.1
	East Midlands	107,832	4,737	4.4	2,013	121	58	0.1
	West Midlands	137,539	5,782	4.2	2,172	164	114	0.1
	East of England	145,877	6,880	4.7	2,949	248	177	0.1
	London	138,254	6,972	5.0	2,755	220	79	0.1
	South East Coast	114,375	5,120	4.5	1,796	161	194	0.2
	South Central	103,742	5,637	5.4	1,835	159	141	0.1
	South West	144,115	7,466	5.2	2,603	219	275	0.2
50-70	England	1,625,063	73,117	4.5	29,544	2,161	1,721	0.1
	North East	89,895	3,167	3.5	1,482	115	47	0.1
	North West	227,528	10,427	4.6	4,017	301	227	0.1
	Yorkshire & Humber	176,050	6,944	3.9	3,343	153	164	0.1
	East Midlands	135,637	5,827	4.3	2,564	157	73	0.1
	West Midlands	175,634	7,226	4.1	2,832	197	149	0.1
	East of England	187,497	8,564	4.6	3,766	305	222	0.1
	London	172,909	8,403	4.9	3,437	260	93	0.1
	South East Coast	146,215	6,605	4.5	2,448	221	242	0.2
	South Central	130,452	6,860	5.3	2,340	186	173	0.1
	South West	183,246	9,094	5.0	3,315	266	331	0.2

Source: KC62 (Parts 1 and 2, Table T)

⁽¹⁾ Including women subsequently referred for cytology, core biopsy or open biopsy⁽²⁾ Including women subsequently referred for open biopsy⁽³⁾ Including all women whose final outcome was early recall, whether after initial screen, assessment, cytology or biopsy (core or open)

Copyright © 2009, The Health and Social Care Information Centre. All rights reserved

Table 7a: NHS Breast Screening Programme: women screened by age and outcome, 2007-08

England		numbers/percentages						
Age	Number of women screened	Referred ⁽¹⁾ for assessment		Referred ⁽²⁾ for cytology and/or core biopsy	Referred for open biopsy	Early Recall ⁽³⁾		
		(number)	%			(number)	(number)	(number)
45 & over	1,713,200	78,909	4.6	32,017	2,339	1,858	0.1	
50-64	1,278,775	58,902	4.6	22,933	1,762	1,396	0.1	
50-70	1,625,063	73,117	4.5	29,544	2,161	1,721	0.1	
45-49	36,023	3,109	8.6	1,152	101	79	0.2	
50-52	257,566	21,496	8.3	8,230	697	592	0.2	
53-54	171,573	7,191	4.2	2,494	208	144	0.1	
55-59	431,456	15,407	3.6	5,907	439	335	0.1	
60-64	418,180	14,808	3.5	6,302	418	325	0.1	
65-70	346,288	14,215	4.1	6,611	399	325	0.1	
Over 70	52,114	2,683	5.1	1,321	77	58	0.1	

Source: KC62 (Parts 1 and 2, Table T)

⁽¹⁾ Including women subsequently referred for cytology, core biopsy or open biopsy⁽²⁾ Including women subsequently referred for open biopsy⁽³⁾ Including all women whose final outcome was early recall, whether after initial screen, assessment, cytology or biopsy (core or open)

Copyright © 2009, The Health and Social Care Information Centre. All rights reserved

Table 8: NHS Breast Screening Programme: women screened and cancers detected by age and type of invitation, 2007-08

England								numbers/rates
Type of invitation	Number of women screened	Cancers detected						
		Number			Rate per 1,000 women screened			
		Total number of women with cancer	Non - invasive or micro - invasive	Small (<15mm)	Total	Non - invasive or micro - invasive	Small (<15mm)	
Women aged 45 & over								
Total	1,713,200	14,110	2,970	5,814	8.2	1.7	3.4	
1st invitation for routine screening	257,266	1,879	517	633	7.3	2.0	2.5	
Routine invitation to previous non-attenders	37,984	406	80	144	10.7	2.1	3.8	
Routine invitation to previous attenders (Last screen within 5 years)	1,202,633	8,956	1,795	3,890	7.4	1.5	3.2	
Routine invitation to previous attenders (Last screen more than 5 years previously)	127,606	1,638	339	633	12.8	2.7	5.0	
Early recalls	1,989	59	24	25	29.7	12.1	12.6	
Self / GP referral (no previous screen)	13,656	178	33	68	13.0	2.4	5.0	
Self / GP referral (within 5 yrs)	57,863	688	125	295	11.9	2.2	5.1	
Self / GP referral (>5 yrs)	14,203	306	57	126	21.5	4.0	8.9	
Women aged 50-64								
Total	1,278,775	9,175	2,000	3,728	7.2	1.6	2.9	
1st invitation for routine screening	219,821	1,621	451	541	7.4	2.1	2.5	
Routine invitation to previous non-attenders	35,132	336	70	118	9.6	2.0	3.4	
Routine invitation to previous attenders (Last screen within 5 years)	933,155	6,299	1,271	2,712	6.8	1.4	2.9	
Routine invitation to previous attenders (Last screen more than 5 years previously)	63,994	634	137	249	9.9	2.1	3.9	
Early recalls	1,496	37	18	14	24.7	12.0	9.4	
Self / GP referral (no previous screen)	10,061	101	21	34	10.0	2.1	3.4	
Self / GP referral (within 5 yrs)	13,045	126	24	52	9.7	1.8	4.0	
Self / GP referral (>5 yrs)	2,071	21	8	8	10.1	3.9	3.9	
Women aged 50-70								
Total	1,625,063	13,066	2,772	5,377	8.0	1.7	3.3	
1st invitation for routine screening	221,452	1,645	454	552	7.4	2.1	2.5	
Routine invitation to previous non-attenders	37,954	406	80	144	10.7	2.1	3.8	
Routine invitation to previous attenders (Last screen within 5 years)	1,202,230	8,950	1,793	3,889	7.4	1.5	3.2	
Routine invitation to previous attenders (Last screen more than 5 years previously)	127,307	1,630	337	630	12.8	2.6	4.9	
Early recalls	1,877	56	22	24	29.8	11.7	12.8	
Self / GP referral (no previous screen)	11,017	121	26	40	11.0	2.4	3.6	
Self / GP referral (within 5 yrs)	19,225	193	41	76	10.0	2.1	4.0	
Self / GP referral (>5 yrs)	4,001	65	19	22	16.2	4.7	5.5	

Source: KC62 (Parts 1 and 3, Tables A to F2)

Copyright © 2009, The Health and Social Care Information Centre. All rights reserved

Table 9: NHS Breast Screening Programme: women screened and cancers detected by age band and SHA, 2007-08

		numbers/rates						
		Cancers detected						
Age band	Strategic Health Authority	Number of women screened	Number			Rate per 1,000 women screened		
			Total number of women with cancer	Non - invasive or micro - invasive	Small (<15mm)	Total	Non - invasive or micro - invasive	Small (<15mm)
45 & over	England	1,713,200	14,110	2,970	5,814	8.2	1.7	3.4
	North East	93,647	731	170	293	7.8	1.8	3.1
	North West	238,906	1,930	345	779	8.1	1.4	3.3
	Yorkshire & the Humber	184,897	1,565	357	639	8.5	1.9	3.5
	East Midlands	144,332	1,229	267	540	8.5	1.8	3.7
	West Midlands	183,968	1,448	271	583	7.9	1.5	3.2
	East of England	198,056	1,697	383	719	8.6	1.9	3.6
	London	181,606	1,479	323	569	8.1	1.8	3.1
	South East Coast	155,125	1,333	313	542	8.6	2.0	3.5
	South Central	138,495	1,134	207	458	8.2	1.5	3.3
	South West	194,168	1,564	334	692	8.1	1.7	3.6
50-64	England	1,278,775	9,175	2,000	3,728	7.2	1.6	2.9
	North East	70,766	493	109	197	7.0	1.5	2.8
	North West	177,975	1,261	235	505	7.1	1.3	2.8
	Yorkshire & the Humber	138,300	1,025	252	398	7.4	1.8	2.9
	East Midlands	107,832	828	177	362	7.7	1.6	3.4
	West Midlands	137,539	954	189	394	6.9	1.4	2.9
	East of England	145,877	1,082	253	441	7.4	1.7	3.0
	London	138,254	1,003	230	388	7.3	1.7	2.8
	South East Coast	114,375	820	207	336	7.2	1.8	2.9
	South Central	103,742	703	133	275	6.8	1.3	2.7
	South West	144,115	1,006	215	432	7.0	1.5	3.0
50-70	England	1,625,063	13,066	2,772	5,377	8.0	1.7	3.3
	North East	89,895	684	158	277	7.6	1.8	3.1
	North West	227,528	1,822	334	732	8.0	1.5	3.2
	Yorkshire & the Humber	176,050	1,473	340	598	8.4	1.9	3.4
	East Midlands	135,637	1,140	247	500	8.4	1.8	3.7
	West Midlands	175,634	1,351	255	556	7.7	1.5	3.2
	East of England	187,497	1,537	351	645	8.2	1.9	3.4
	London	172,909	1,379	304	537	8.0	1.8	3.1
	South East Coast	146,215	1,216	283	491	8.3	1.9	3.4
	South Central	130,452	1,037	196	417	7.9	1.5	3.2
	South West	183,246	1,427	304	624	7.8	1.7	3.4

Source: KC62 (Parts 1 and 3, Table T)
Copyright © 2009, The Health and Social Care Information Centre. All rights reserved

Table 9a: NHS Breast Screening Programme: women screened and cancers detected by age band, 2007-08

		numbers/rates						
		Cancers detected						
Age band	Number of women screened (thousands)	Number			Rate per 1,000 women screened			
		Total number of women with cancer	Non - invasive or micro - invasive	Small (<15mm)	Total	Non - invasive or micro - invasive	Small (<15mm)	
Total	1,713,200	14,110	2,970	5,814	8.2	1.7	3.4	
50-64	1,278,775	9,175	2,000	3,728	7.2	1.6	2.9	
50-70	1,625,063	13,066	2,772	5,377	8.0	1.7	3.3	
45-49	36,023	236	63	82	6.6	1.7	2.3	
50-52	257,566	1,791	495	618	7.0	1.9	2.4	
53-54	171,573	925	210	380	5.4	1.2	2.2	
55-59	431,456	2,886	597	1,179	6.7	1.4	2.7	
60-64	418,180	3,573	698	1,551	8.5	1.7	3.7	
65-70	346,288	3,891	772	1,649	11.2	2.2	4.8	
Over 70	52,114	808	135	355	15.5	2.6	6.8	

Source: KC62 (Parts 1 and 3, Table T)
Copyright © 2009, The Health and Social Care Information Centre. All rights reserved

Table 10: NHS Breast Screening Programme: women aged 45 and over, with cancer diagnosed, by size of cancer and age band, 2007-08

England										numbers/percentages
Size of cancer	Age									
	45 & over	50-64	50-70	45-49	50-54	55-59	60-64	65-70	Over 70	
All cancers	14,110	9,175	13,066	236	2,716	2,886	3,573	3,891	808	
Invasive status not known	30	14	27	0	2	3	9	13	3	
Non-invasive or possibly micro-invasive	2,830	1,896	2,640	61	679	555	662	744	129	
Definitely micro-invasive	140	104	132	2	26	42	36	28	6	
Invasive total	11,110	7,161	10,267	173	2,009	2,286	2,866	3,106	670	
Small (less than 15mm) total	5,814	3,728	5,377	82	998	1,179	1,551	1,649	355	
<i>per 1,000 women screened</i>	3.4	2.9	3.3	2.3	2.3	2.7	3.7	4.8	6.8	
<i>as a percentage of total invasive</i>	52	52	52	47	50	52	54	53	53	
Less than 10mm	2,726	1,751	2,523	40	475	565	711	772	163	
Greater than or equal to 10mm and less than 15mm	3,088	1,977	2,854	42	523	614	840	877	192	
Greater than or equal to 15mm and less than 20mm	2,101	1,340	1,959	28	384	419	537	619	114	
Greater than or equal to 20mm and less than 50mm	2,675	1,766	2,462	52	528	583	655	696	161	
Greater than or equal to 50mm	246	161	224	8	51	53	57	63	14	
Size not known	274	166	245	3	48	52	66	79	26	

Source: KC62 (Parts 1 and 3, Table T)

Copyright © 2009, The Health and Social Care Information Centre. All rights reserved

Table 10a: NHS Breast Screening Programme: women aged 50-64 and 50-70, with cancer diagnosed, by invitation type and size of cancer, 2007-08

England		numbers/percentages				
Size of cancer	All invitation types	Invitation type				Early recalls
		1st invitation for routine screening	Routine invitation to previous non-attenders	Routine invitation to previous attenders Last screen within 5 years	Routine invitation to previous attenders Last screen more than 5 years previously	
Women aged 50-64						
All cancers	9,175	1,621	336	6,299	634	37
Invasive status not known	14	1	1	10	2	0
Non-invasive or possibly micro-invasive	1,896	434	67	1,199	127	18
Definitely micro-invasive	104	17	3	72	10	0
Invasive total	7,161	1,169	265	5,018	495	19
Small (less than 15mm) total	3,728	541	118	2,712	249	14
<i>per 1,000 women screened</i>	2.9	2.5	3.4	2.9	3.9	9.4
<i>as a percentage of total invasive</i>	52	46	45	54	50	74
Less than 10mm	1,751	266	59	1,256	114	9
Greater than or equal to 10mm and less than 15mm	1,977	275	59	1,456	135	5
Greater than or equal to 15mm and less than 20mm	1,340	235	52	923	91	1
Greater than or equal to 20mm and less than 50mm	1,766	334	79	1,186	120	2
Greater than or equal to 50mm	161	32	7	100	13	1
Size not known	166	27	9	97	22	1
Women aged 50-70						
All cancers	13,066	1,645	406	8,950	1,630	56
Invasive status not known	27	1	1	21	4	0
Non-invasive or possibly micro-invasive	2,640	437	76	1,700	323	22
Definitely micro-invasive	132	17	4	93	14	0
Invasive total	10,267	1,190	325	7,136	1,289	34
Small (less than 15mm) total	5,377	552	144	3,889	630	24
<i>per 1,000 women screened</i>	3.3	2.5	3.8	3.2	4.9	12.8
<i>as a percentage of total invasive</i>	52	46	44	54	49	71
Less than 10mm	2,523	271	74	1,800	295	14
Greater than or equal to 10mm and less than 15mm	2,854	281	70	2,089	335	10
Greater than or equal to 15mm and less than 20mm	1,959	240	61	1,328	261	4
Greater than or equal to 20mm and less than 50mm	2,462	337	98	1,639	318	3
Greater than or equal to 50mm	224	32	9	144	29	1
Size not known	245	29	13	136	51	2

Source: KC62 (Parts 1 and 3, Tables A to D & T)

Copyright © 2009, The Health and Social Care Information Centre. All rights reserved

Table 11: NHS Breast Screening Programme: coverage of women aged 53-64 by Primary Care Organisation, at 31 March 2007 and 2008

numbers/percentages

	As at 31 March 2007			As at 31 March 2008		
	Eligible Population ⁽¹⁾	Number of women screened	Coverage (less than 3 years since last test) (%)	Eligible Population ⁽¹⁾	Number of women screened	Coverage (less than 3 years since last test) (%)
England	3,690,074	2,805,717	76.0	3,713,812	2,847,824	76.7
Q30 North East SHA	191,892	152,310	79.4	194,553	154,731	79.5
5D7 Newcastle PCT	15,538	11,421	73.5	15,692	12,120	77.2
5D8 North Tyneside PCT	15,610	12,310	78.9	15,997	12,672	79.2
5D9 Hartlepool PCT	6,560	5,040	76.8	6,607	5,129	77.6
5E1 Stockton-on-Tees Teaching PCT	13,249	10,518	79.4	13,525	10,644	78.7
5J9 Darlington PCT	7,574	5,918	78.1	7,648	5,953	77.8
5KF Gateshead PCT	14,566	11,764	80.8	14,750	11,659	79.0
5KG South Tyneside PCT	10,977	8,664	78.9	11,120	8,756	78.7
5KL Sunderland Teaching PCT	20,305	16,466	81.1	20,619	16,563	80.3
5KM Middlesbrough PCT	9,444	6,970	73.8	9,671	7,056	73.0
5ND County Durham PCT	40,058	31,667	79.1	40,481	32,794	81.0
5QR Redcar & Cleveland PCT	10,577	8,569	81.0	10,607	8,314	78.4
TAC Northumberland Care Trust	27,434	23,003	83.8	27,836	23,071	82.9
Q31 North West SHA	509,688	377,215	74.0	511,902	386,052	75.4
5CC Blackburn with Darwen PCT	9,875	7,095	71.8	10,021	6,965	69.5
5F5 Salford PCT	14,519	9,019	62.1	14,419	10,398	72.1
5F7 Stockport PCT	21,463	16,327	76.1	21,544	16,468	76.4
5HG Ashton, Leigh & Wigan PCT	23,838	18,521	77.7	23,677	17,633	74.5
5HP Blackpool PCT	10,790	6,513	60.4	10,763	6,587	61.2
5HQ Bolton PCT	19,706	15,031	76.3	19,785	15,515	78.4
5J2 Warrington PCT	14,321	11,319	79.0	14,444	11,363	78.7
5J4 Knowsley PCT	9,954	7,031	70.6	10,133	7,092	70.0
5J5 Oldham PCT	15,861	10,250	64.6	15,851	11,713	73.9
5JX Bury PCT	13,830	10,966	79.3	13,881	11,002	79.3
5LH Tameside & Glossop PCT	16,720	10,355	61.9	16,617	12,583	75.7
5NE Cumbria PCT	42,414	33,024	77.9	42,694	33,693	78.9
5NF North Lancashire PCT	25,843	17,685	68.4	25,861	19,871	76.8
5NG Central Lancashire PCT	33,498	24,354	72.7	33,522	24,469	73.0
5NH East Lancashire PCT	28,122	20,840	74.1	28,265	21,015	74.3
5NJ Sefton PCT	21,244	15,992	75.3	21,280	16,014	75.3
5NK Wirral PCT	24,903	19,685	79.0	25,118	19,993	79.6
5NL Liverpool PCT	29,552	21,296	72.1	30,015	21,825	72.7
5NM Halton & St Helens PCT	23,798	17,993	75.6	23,930	18,382	76.8
5NN Western Cheshire PCT	19,156	15,756	82.3	19,247	15,675	81.4
5NP Central & Eastern Cheshire PCT	36,203	30,139	83.3	36,347	30,207	83.1
5NQ Heywood, Middleton & Rochdale PCT	14,577	10,846	74.4	14,690	10,512	71.6
5NR Trafford PCT	15,426	11,513	74.6	15,532	11,527	74.2
5NT Manchester PCT	24,075	15,665	65.1	24,266	15,550	64.1
Q32 Yorkshire & the Humber SHA	373,320	282,165	75.6	375,801	289,208	77.0
5EF North Lincolnshire PCT	13,023	6,124	47.0	13,141	9,442	71.9
5H8 Rotherham PCT	18,586	15,505	83.4	18,659	15,505	83.1
5J6 Calderdale PCT	14,873	11,059	74.4	15,034	10,769	71.6
5JE Barnsley PCT	17,725	14,750	83.2	17,797	14,866	83.5
5N1 Leeds PCT	48,063	34,507	71.8	48,199	35,888	74.5
5N2 Kirklees PCT	27,772	21,795	78.5	27,870	21,773	78.1
5N3 Wakefield District PCT	25,500	17,218	67.5	25,668	20,066	78.2
5N4 Sheffield PCT	35,122	27,330	77.8	35,125	27,734	79.0
5N5 Doncaster PCT	22,009	17,934	81.5	22,210	16,989	76.5
5NV North Yorkshire & York PCT	62,588	52,099	83.2	63,191	52,646	83.3
5NW East Riding of Yorkshire PCT	26,976	19,060	70.7	27,180	20,027	73.7
5NX Hull Teaching PCT	18,020	11,731	65.1	18,070	13,300	73.6
5NY Bradford & Airedale Teaching PCT	30,921	23,481	75.9	31,428	23,220	73.9
TAN North East Lincolnshire PCT	12,142	9,572	78.8	12,229	6,983	57.1
Q33 East Midlands SHA	326,715	264,296	80.9	329,303	266,532	80.9
5EM Nottingham City PCT	15,481	11,803	76.2	15,756	12,064	76.6
5ET Bassetlaw PCT	8,877	7,486	84.3	8,917	7,397	83.0
5N6 Derbyshire County PCT	55,750	45,882	82.3	56,097	46,433	82.8
5N7 Derby City PCT	18,463	15,259	82.6	18,584	15,153	81.5
5N8 Nottinghamshire County PCT	50,330	41,766	83.0	50,468	42,107	83.4
5N9 Lincolnshire PCT	59,992	45,204	75.4	60,577	45,724	75.5
5PA Leicestershire County & Rutland PCT	51,303	43,339	84.5	51,623	43,675	84.6
5PC Leicester City PCT	17,838	13,597	76.2	18,180	13,804	75.9
5PD Northamptonshire PCT	48,681	39,960	82.1	49,101	40,175	81.8
Q34 West Midlands SHA	395,515	311,203	78.7	396,035	310,030	78.3
5CN Herefordshire PCT	14,700	11,785	80.2	14,885	12,125	81.5
5M1 South Birmingham PCT	22,772	17,348	76.2	22,872	16,808	73.5
5M2 Shropshire County PCT	24,539	20,365	83.0	24,618	20,582	83.6
5M3 Walsall Teaching PCT	17,664	13,562	76.8	17,488	13,436	76.8
5MD Coventry Teaching PCT	20,263	15,081	74.4	20,270	14,894	73.5
5MK Telford & Wrekin PCT	11,932	9,491	79.5	12,097	9,642	79.7
5MV Wolverhampton City PCT	16,051	11,911	74.2	16,058	11,872	73.9
5MX Heart of Birmingham Teaching PCT	11,500	7,704	67.0	11,651	7,786	66.8
5PE Dudley PCT	23,272	18,544	79.7	23,112	17,983	77.8
5PF Sandwell PCT	20,100	14,826	73.8	20,156	14,773	73.3
5PG Birmingham East & North PCT	25,461	19,069	74.9	25,399	18,734	73.8
5PH North Staffordshire PCT	16,885	13,654	80.9	16,887	13,560	80.3
5PJ Stoke on Trent PCT	18,636	14,409	77.3	18,636	14,481	77.7
5PK South Staffordshire PCT	48,008	39,364	82.0	47,960	39,183	81.7
5PL Worcestershire PCT	45,739	37,739	82.5	45,911	38,001	82.8
5PM Warwickshire PCT	41,390	33,194	80.2	41,475	33,162	80.0
TAM Solihull Care Trust	16,603	13,157	79.2	16,560	13,008	78.6

continued

Table 11: NHS Breast Screening Programme: coverage of women aged 53-64 by Primary Care Organisation, at 31 March 2007 and 2008

numbers/percentages

	As at 31 March 2007			As at 31 March 2008		
	Eligible Population ⁽¹⁾	Number of women screened	Coverage (less than 3 years since last test) (%)	Eligible Population ⁽¹⁾	Number of women screened	Coverage (less than 3 years since last test) (%)
England	3,690,074	2,805,717	76.0	3,713,812	2,847,824	76.7
Q35 East of England SHA	426,810	322,621	75.6	430,147	337,133	78.4
5GC Luton Teaching PCT	10,396	7,634	73.4	10,429	7,916	75.9
5P1 South East Essex PCT	27,441	19,869	72.4	27,488	20,301	73.9
5P2 Bedfordshire PCT	29,860	23,436	78.5	30,228	24,301	80.4
5P3 East & North Hertfordshire PCT	38,284	28,720	75.0	38,456	29,611	77.0
5P4 West Hertfordshire PCT	38,069	26,468	69.5	38,418	28,956	75.4
5PN Peterborough PCT	10,198	8,006	78.5	10,262	8,063	78.6
5PP Cambridgeshire PCT	42,301	33,493	79.2	42,743	34,283	80.2
5PQ Norfolk PCT	60,984	49,028	80.4	61,423	49,680	80.9
5PR Great Yarmouth & Waveney Teaching PCT	19,119	15,333	80.2	19,131	15,372	80.4
5PT Suffolk PCT	48,025	39,490	82.2	48,572	39,785	81.9
5PV West Essex PCT	20,057	6,848	34.1	20,185	13,388	66.3
5PW North East Essex PCT	24,837	20,550	82.7	25,078	20,568	82.0
5PX Mid Essex PCT	28,249	22,445	79.5	28,628	23,753	83.0
5PY South West Essex PCT	28,990	21,301	73.5	29,106	21,156	72.7
Q36 London SHA	438,260	284,901	65.0	441,140	284,194	64.4
5A4 Havering PCT	18,273	13,514	74.0	18,099	14,351	79.3
5A5 Kingston PCT	10,444	6,658	63.7	10,650	7,635	71.7
5A7 Bromley PCT	22,672	17,217	75.9	22,705	17,321	76.3
5A8 Greenwich Teaching PCT	13,087	8,751	66.9	13,187	8,727	66.2
5A9 Barnet PCT	21,750	13,359	61.4	21,830	9,591	43.9
5AT Hillingdon PCT	15,452	10,620	68.7	15,499	11,211	72.3
5C1 Enfield PCT	17,187	11,559	67.3	17,303	10,273	59.4
5C2 Barking & Dagenham PCT	8,589	6,071	70.7	8,611	6,160	71.5
5C3 City & Hackney Teaching PCT	10,381	5,601	54.0	10,499	5,800	55.2
5C4 Tower Hamlets PCT	7,845	4,271	54.4	7,909	4,363	55.2
5C5 Newham PCT	12,348	6,391	51.8	12,530	7,147	57.0
5C9 Haringey Teaching PCT	13,495	7,338	54.4	13,766	7,349	53.4
5H1 Hammersmith & Fulham PCT	8,744	5,225	59.8	8,855	5,369	60.6
5HX Ealing PCT	18,869	12,915	68.4	18,891	13,070	69.2
5HY Hounslow PCT	13,945	9,382	67.3	14,062	9,474	67.4
5K5 Brent Teaching PCT	16,406	10,241	62.4	16,525	7,383	44.7
5K6 Harrow PCT	14,658	10,486	71.5	14,706	9,613	65.4
5K7 Camden PCT	10,531	5,889	55.9	10,769	6,075	56.4
5K8 Islington PCT	9,652	5,784	59.9	9,643	5,813	60.3
5K9 Croydon PCT	21,320	15,043	70.6	21,569	15,319	71.0
5LA Kensington & Chelsea PCT	10,027	5,499	54.8	10,002	5,569	55.7
5LC Westminster PCT	11,307	6,004	53.1	11,265	6,027	53.5
5LD Lambeth PCT	13,648	8,432	61.8	13,927	8,388	60.2
5LE Southwark PCT	11,733	7,339	62.6	11,922	7,442	62.4
5LF Lewisham PCT	13,177	8,778	66.6	13,278	8,575	64.6
5LG Wandsworth PCT	14,151	8,895	62.9	14,128	9,044	64.0
5M6 Richmond & Twickenham PCT	12,258	8,426	68.7	12,301	8,738	71.0
5M7 Sutton & Merton PCT	22,679	15,791	69.6	22,905	16,361	71.4
5NA Redbridge PCT	15,102	8,798	58.3	15,295	10,734	70.2
5NC Waltham Forest PCT	13,215	8,858	67.0	13,264	9,402	70.9
TAK Bexley Care Trust	15,315	11,766	76.8	15,245	11,870	77.9
Q37 South East Coast SHA	327,879	256,412	78.2	329,784	255,956	77.6
5L3 Medway PCT	19,248	14,659	76.2	19,448	15,795	81.2
5LQ Brighton & Hove City PCT	15,288	10,716	70.1	15,461	9,940	64.3
5P5 Surrey PCT	80,044	62,377	77.9	80,275	62,109	77.4
5P6 West Sussex PCT	62,346	48,140	77.2	62,558	49,134	78.5
5P7 East Sussex Downs & Weald PCT	28,074	22,459	80.0	28,396	20,453	72.0
5P8 Hastings & Rother PCT	14,772	11,846	80.2	14,867	11,722	78.8
5P9 West Kent PCT	50,574	39,955	79.0	50,764	40,453	79.7
5QA Eastern & Coastal Kent PCT	57,533	46,260	80.4	58,015	46,350	79.9
Q38 South Central SHA	287,677	228,549	79.4	290,190	230,775	79.5
5CQ Milton Keynes PCT	15,385	12,335	80.2	15,894	12,628	79.5
5FE Portsmouth City Teaching PCT	11,732	7,976	68.0	11,842	8,615	72.7
5L1 Southampton City PCT	14,295	10,525	73.6	14,362	10,240	71.3
5QC Hampshire PCT	98,244	78,188	79.6	98,982	77,405	78.2
5QD Buckinghamshire PCT	37,323	31,242	83.7	37,450	31,111	83.1
5QE Oxfordshire PCT	43,049	33,481	77.8	43,244	35,290	81.6
5QF Berkshire West PCT	31,060	24,897	80.2	31,411	25,559	81.4
5QG Berkshire East PCT	24,055	19,459	80.9	24,411	19,661	80.5
5QT Isle of Wight PCT	12,534	10,446	83.3	12,594	10,266	81.5
Q39 South West SHA	412,318	326,045	79.1	414,957	333,213	80.3
5A3 South Gloucestershire PCT	17,644	14,450	81.9	17,701	14,452	81.6
5F1 Plymouth Teaching PCT	18,330	15,040	82.1	18,300	14,951	81.7
5FL Bath & North East Somerset PCT	13,223	8,793	66.5	13,202	10,278	77.9
5K3 Swindon PCT	12,787	10,172	79.5	13,140	10,462	79.6
5M8 North Somerset PCT	17,263	13,371	77.5	17,340	14,044	81.0
5QH Gloucestershire PCT	45,520	36,614	80.4	45,678	36,883	80.7
5QJ Bristol PCT	25,114	18,461	73.5	25,147	18,730	74.5
5QK Wiltshire PCT	35,330	28,099	79.5	35,891	29,035	80.9
5QL Somerset PCT	43,819	36,207	82.6	44,124	36,407	82.5
5QM Dorset PCT	35,328	28,117	79.6	35,626	28,907	81.1
5QN Bournemouth & Poole PCT	24,628	19,121	77.6	24,973	19,511	78.1
5QP Cornwall & Isles of Scilly PCT	47,606	38,032	79.9	47,826	38,538	80.6
5QQ Devon PCT	63,637	49,944	78.5	63,935	51,516	80.6
TAL Torbay Care Trust	12,089	9,624	79.6	12,074	9,499	78.7

Source : KC63

⁽¹⁾ This is the number of women in the registered population less those recorded as ineligible
 Copyright © 2009, The Health and Social Care Information Centre. All rights reserved

Table 11a: NHS Breast Screening Programme: coverage of women aged 53-70 by Primary Care Organisation, at 31 March 2007 and 2008

	As at 31 March 2007			As at 31 March 2008		
	Eligible Population ⁽¹⁾	Number of women screened	Coverage (less than 3 years since last test) (%)	Eligible Population ⁽¹⁾	Number of women screened	Coverage (less than 3 years since last test) (%)
England	5,066,409	3,738,149	73.8	5,115,011	3,883,130	75.9
Q30 North East SHA	266,659	208,904	78.3	269,128	212,115	78.8
5D7 Newcastle PCT	21,779	15,767	72.4	21,841	16,681	76.4
5D8 North Tyneside PCT	21,605	16,844	78.0	21,931	17,141	78.2
5D9 Hartlepool PCT	9,219	7,053	76.5	9,209	7,149	77.6
5E1 Stockton-on-Tees Teaching PCT	18,241	14,361	78.7	18,533	14,475	78.1
5J9 Darlington PCT	10,454	8,124	77.7	10,517	8,161	77.6
5KF Gateshead PCT	20,632	16,383	79.4	20,755	16,293	78.5
5KG South Tyneside PCT	15,413	11,815	76.7	15,474	11,981	77.4
5KL Sunderland Teaching PCT	28,269	22,504	79.6	28,569	22,588	79.1
5KM Middlesbrough PCT	13,308	9,715	73.0	13,436	9,702	72.2
5ND County Durham PCT	55,317	43,137	78.0	55,866	44,807	80.2
5QR Redcar & Cleveland PCT	14,794	11,881	80.3	14,864	11,583	77.9
TAC Northumberland Care Trust	37,628	31,320	83.2	38,133	31,554	82.7
Q31 North West SHA	705,810	507,914	72.0	710,394	530,644	74.7
5CC Blackburn with Darwen PCT	13,482	9,616	71.3	13,699	9,465	69.1
5F5 Salford PCT	20,335	12,360	60.8	20,268	14,519	71.6
5F7 Stockport PCT	29,761	22,516	75.7	29,859	22,729	76.1
5HG Ashton, Leigh & Wigan PCT	32,731	24,122	73.7	32,914	24,157	73.4
5HP Blackpool PCT	15,323	8,877	57.9	15,250	9,274	60.8
5HQ Bolton PCT	26,866	20,328	75.7	27,163	21,149	77.9
5J2 Warrington PCT	19,824	15,407	77.7	20,134	15,688	77.9
5J4 Knowsley PCT	14,179	9,373	66.1	14,210	9,814	69.1
5J5 Oldham PCT	21,719	13,871	63.9	21,689	15,887	73.2
5JX Bury PCT	18,965	14,815	78.1	19,000	14,897	78.4
5LH Tameside & Glossop PCT	22,850	14,000	61.3	22,931	17,130	74.7
5NE Cumbria PCT	59,039	44,531	75.4	59,629	46,815	78.5
5NF North Lancashire PCT	36,940	24,662	66.8	37,131	28,302	76.2
5NG Central Lancashire PCT	45,923	31,928	69.5	46,253	33,638	72.7
5NH East Lancashire PCT	37,927	27,793	73.3	38,225	28,142	73.6
5NJ Sefton PCT	30,353	22,068	72.7	30,442	22,606	74.3
5NK Wirral PCT	34,600	26,913	77.8	34,997	27,549	78.7
5NL Liverpool PCT	41,234	27,939	67.8	41,607	29,568	71.1
5NM Halton & St Helens PCT	32,675	23,945	73.3	32,929	25,042	76.0
5NN Western Cheshire PCT	26,767	21,090	78.8	26,910	21,742	80.8
5NP Central & Eastern Cheshire PCT	49,625	40,858	82.3	50,055	41,229	82.4
5NQ Heywood, Middleton & Rochdale PCT	19,679	14,476	73.6	19,927	14,141	71.0
5NR Trafford PCT	21,469	15,853	73.8	21,548	15,815	73.4
5NT Manchester PCT	33,544	20,573	61.3	33,624	21,346	63.5
Q32 Yorkshire & the Humber SHA	515,550	375,132	72.8	518,911	394,823	76.1
5EF North Lincolnshire PCT	17,840	7,906	44.3	18,033	12,813	71.1
5H8 Rotherham PCT	25,745	21,140	82.1	25,891	21,269	82.1
5J6 Calderdale PCT	20,074	14,137	70.4	20,279	14,252	70.3
5JE Barnsley PCT	24,471	20,164	82.4	24,656	20,415	82.8
5N1 Leeds PCT	66,457	47,034	70.8	66,545	49,165	73.9
5N2 Kirkcaldies PCT	37,810	27,985	74.0	38,068	29,301	77.0
5N3 Wakefield District PCT	34,854	23,134	66.4	35,249	27,116	76.9
5N4 Sheffield PCT	49,388	36,463	73.8	49,394	38,641	78.2
5N5 Doncaster PCT	30,527	23,986	78.6	30,687	23,214	75.6
5NV North Yorkshire & York PCT	86,571	69,351	80.1	87,599	72,334	82.6
5NW East Riding of Yorkshire PCT	37,393	24,596	65.8	37,835	27,542	72.8
5NX Hull Teaching PCT	24,840	15,739	63.4	24,830	17,980	72.4
5NY Bradford & Airedale Teaching PCT	42,595	30,531	71.7	42,874	31,174	72.7
TAN North East Lincolnshire PCT	16,985	12,966	76.3	16,971	9,607	56.6
Q33 East Midlands SHA	446,085	350,683	78.6	451,828	360,877	79.9
5EM Nottingham City PCT	21,522	16,170	75.1	21,819	16,540	75.8
5ET Bassetlaw PCT	12,090	9,542	78.9	12,258	9,858	80.4
5N6 Derbyshire County PCT	75,793	61,812	81.6	76,770	63,077	82.2
5N7 Derby City PCT	25,645	20,934	81.6	25,830	20,810	80.6
5N8 Nottinghamshire County PCT	69,088	56,643	82.0	69,718	57,637	82.7
5N9 Lincolnshire PCT	83,614	59,466	71.1	84,933	62,458	73.5
5PA Leicestershire County & Rutland PCT	69,067	55,546	80.4	70,003	58,479	83.5
5PC Leicester City PCT	24,589	17,855	72.6	24,807	18,560	74.8
5PD Northamptonshire PCT	64,677	52,715	81.5	65,690	53,458	81.4
Q34 West Midlands SHA	547,007	412,796	75.5	550,528	424,308	77.1
5CN Herefordshire PCT	20,330	15,719	77.3	20,625	16,756	81.2
5M1 South Birmingham PCT	31,136	23,440	75.3	31,348	22,857	72.9
5M2 Shropshire County PCT	34,055	26,211	77.0	34,412	28,528	82.9
5M3 Walsall Teaching PCT	25,050	16,929	67.6	24,997	18,221	72.9
5MD Coventry Teaching PCT	28,288	20,849	73.7	28,389	20,699	72.9
5MK Telford & Wrekin PCT	16,110	12,016	74.6	16,403	12,924	78.8
5MV Wolverhampton City PCT	22,793	16,449	72.2	22,817	16,525	72.4
5MX Heart of Birmingham Teaching PCT	16,356	10,675	65.3	16,366	10,807	66.0
5PE Dudley PCT	32,613	25,438	78.0	32,585	25,019	76.8
5PF Sandwell PCT	28,572	18,058	63.2	28,679	19,362	67.5
5PG Birmingham East & North PCT	35,906	25,664	71.5	35,821	25,927	72.4
5PH North Staffordshire PCT	23,278	18,494	79.4	23,342	18,425	78.9
5PJ Stoke on Trent PCT	25,958	19,729	76.0	26,063	19,979	76.7
5PK South Staffordshire PCT	65,501	51,378	78.4	66,235	53,711	81.1
5PL Worcestershire PCT	62,121	49,276	79.3	62,777	51,653	82.3
5PM Warwickshire PCT	56,332	44,741	79.4	56,982	45,249	79.4
TAM Solihull Care Trust	22,608	17,730	78.4	22,687	17,666	77.9

continued

Table 11a: NHS Breast Screening Programme: coverage of women aged 53-70 by Primary Care Organisation, at 31 March 2007 and 2008

	As at 31 March 2007			As at 31 March 2008		
	Eligible Population ⁽¹⁾	Number of women screened	Coverage (less than 3 years since last test) (%)	Eligible Population ⁽¹⁾	Number of women screened	Coverage (less than 3 years since last test) (%)
England	5,066,409	3,738,149	73.8	5,115,011	3,883,130	75.9
Q35 East of England SHA	583,218	434,638	74.5	590,822	460,216	77.9
5GC Luton Teaching PCT	14,417	10,393	72.1	14,464	10,875	75.2
5P1 South East Essex PCT	37,773	26,193	69.3	38,185	28,054	73.5
5P2 Bedfordshire PCT	40,133	31,122	77.5	40,811	32,504	79.6
5P3 East & North Hertfordshire PCT	52,524	38,991	74.2	52,954	40,491	76.5
5P4 West Hertfordshire PCT	51,285	35,065	68.4	51,887	38,825	74.8
5PN Peterborough PCT	13,734	10,656	77.6	13,830	10,828	78.3
5PP Cambridgeshire PCT	57,061	44,767	78.5	58,158	46,434	79.8
5PQ Norfolk PCT	84,837	67,366	79.4	85,957	69,173	80.5
5PR Great Yarmouth & Waveney Teaching PCT	26,607	21,043	79.1	26,798	21,362	79.7
5PT Suffolk PCT	65,687	53,502	81.4	66,862	54,423	81.4
5PV West Essex PCT	27,010	9,197	34.1	27,326	17,996	65.9
5PW North East Essex PCT	34,802	28,295	81.3	35,332	28,748	81.4
5PX Mid Essex PCT	37,889	29,746	78.5	38,553	31,777	82.4
5PY South West Essex PCT	39,459	28,302	71.7	39,705	28,726	72.3
Q36 London SHA	595,990	371,088	62.3	599,309	381,077	63.6
5A4 Havering PCT	25,059	17,487	69.8	24,930	19,640	78.8
5A5 Kingston PCT	13,913	8,309	59.7	14,126	10,091	71.4
5A7 Bromley PCT	31,032	23,215	74.8	31,124	23,529	75.6
5A8 Greenwich Teaching PCT	17,775	11,712	65.9	17,829	11,758	65.9
5A9 Barnet PCT	29,482	16,508	56.0	29,615	12,535	42.3
5AT Hillingdon PCT	21,258	14,167	66.6	21,204	15,192	71.6
5C1 Enfield PCT	23,674	15,062	63.6	23,792	13,951	58.6
5C2 Barking & Dagenham PCT	11,797	8,124	68.9	11,782	8,252	70.0
5C3 City & Hackney Teaching PCT	13,997	7,341	52.4	13,992	7,617	54.4
5C4 Tower Hamlets PCT	10,919	5,714	52.3	10,907	5,827	53.4
5C5 Newham PCT	16,684	7,938	47.6	16,763	9,415	56.2
5C9 Haringey Teaching PCT	18,325	9,096	49.6	18,586	9,742	52.4
5H1 Hammersmith & Fulham PCT	11,846	6,636	56.0	12,000	7,188	59.9
5HX Ealing PCT	25,734	16,950	65.9	25,749	17,516	68.0
5HY Hounslow PCT	18,726	11,994	64.0	18,817	12,473	66.3
5K5 Brent Teaching PCT	22,657	13,102	57.8	22,756	10,023	44.0
5K6 Harrow PCT	20,200	13,762	68.1	20,304	13,012	64.1
5K7 Camden PCT	14,238	7,344	51.6	14,519	8,048	55.4
5K8 Islington PCT	13,021	7,555	58.0	13,030	7,694	59.0
5K9 Croydon PCT	28,975	19,280	66.5	29,301	20,449	69.8
5LA Kensington & Chelsea PCT	13,473	6,951	51.6	13,514	7,472	55.3
5LC Westminster PCT	15,074	7,602	50.4	15,041	7,920	52.7
5LD Lambeth PCT	18,614	11,248	60.4	18,928	11,274	59.6
5LE Southwark PCT	16,068	9,840	61.2	16,225	9,970	61.4
5LF Lewisham PCT	18,218	11,912	65.4	18,349	11,703	63.8
5LG Wandsworth PCT	19,017	11,452	60.2	19,082	12,043	63.1
5M6 Richmond & Twickenham PCT	15,944	10,609	66.5	16,202	11,425	70.5
5M7 Sutton & Merton PCT	30,867	20,518	66.5	31,063	21,906	70.5
5NA Redbridge PCT	20,399	12,034	59.0	20,672	14,497	70.1
5NC Waltham Forest PCT	17,904	11,492	64.2	18,034	12,620	70.0
TAK Bexley Care Trust	21,100	16,134	76.5	21,073	16,295	77.3
Q37 South East Coast SHA	449,688	337,651	75.1	454,753	348,931	76.7
5L3 Medway PCT	25,745	19,000	73.8	26,065	21,031	80.7
5LQ Brighton & Hove City PCT	20,950	14,545	69.4	21,089	13,431	63.7
5P5 Surrey PCT	108,947	84,078	77.2	109,844	84,438	76.9
5P6 West Sussex PCT	86,305	61,582	71.4	87,265	66,853	76.6
5P7 East Sussex Downs & Weald PCT	39,136	31,074	79.4	39,775	28,672	72.1
5P8 Hastings & Rother PCT	20,664	16,492	79.8	20,915	16,487	78.8
5P9 West Kent PCT	68,988	50,994	73.9	69,634	54,962	78.9
5QA Eastern & Coastal Kent PCT	78,953	59,886	75.9	80,166	63,057	78.7
Q38 South Central SHA	389,692	302,752	77.7	395,443	313,060	79.2
5CQ Milton Keynes PCT	19,796	15,764	79.6	20,489	16,193	79.0
5FE Portsmouth City Teaching PCT	16,231	10,811	66.6	16,393	11,812	72.1
5L1 Southampton City PCT	19,378	13,327	68.8	19,618	13,924	71.0
5QC Hampshire PCT	134,206	105,224	78.4	136,094	106,171	78.0
5QD Buckinghamshire PCT	50,360	41,360	82.1	50,921	42,218	82.9
5QE Oxfordshire PCT	58,540	44,422	75.9	59,228	48,069	81.2
5QF Berkshire West PCT	41,486	32,054	77.3	42,101	33,963	80.7
5QG Berkshire East PCT	32,321	25,641	79.3	32,884	26,368	80.2
5QT Isle of Wight PCT	17,374	14,149	81.4	17,715	14,342	81.0
Q39 South West SHA	566,710	436,591	77.0	573,895	457,079	79.6
5A3 South Gloucestershire PCT	24,148	18,784	77.8	24,418	19,645	80.5
5F1 Plymouth Teaching PCT	25,106	20,391	81.2	25,243	20,511	81.3
5FL Bath & North East Somerset PCT	18,066	11,338	62.8	18,130	13,925	76.8
5K3 Swindon PCT	17,314	13,018	75.2	17,740	14,027	79.1
5M8 North Somerset PCT	23,582	17,823	75.6	23,888	19,155	80.2
5QH Gloucestershire PCT	62,148	49,473	79.6	62,963	50,459	80.1
5QJ Bristol PCT	34,245	24,657	72.0	34,366	25,316	73.7
5QK Wiltshire PCT	48,195	37,314	77.4	49,148	39,472	80.3
5QL Somerset PCT	60,218	48,759	81.0	61,184	50,231	82.1
5QM Dorset PCT	49,645	38,368	77.3	50,327	40,492	80.5
5QN Bournemouth & Poole PCT	34,046	25,760	75.7	34,521	26,644	77.2
5QP Cornwall & Isles of Scilly PCT	65,032	50,418	77.5	65,741	52,546	79.9
5QQ Devon PCT	88,074	67,509	76.7	89,260	71,432	80.0
TAL Torbay Care Trust	16,891	12,979	76.8	16,966	13,224	77.9

Source : KC63

⁽¹⁾ This is the number of women in the registered population less those recorded as ineligible
 Copyright © 2009, The Health and Social Care Information Centre. All rights reserved

Table 12: NHS Breast Screening Programme: uptake by women aged 50-64 of invitations to screen, by breast screening unit, 1998-99 to 2007-06⁽¹⁾

Breast Screening Unit	percentages										Change 2006-07 to 2007-08
	1998-99	1999-2000	2000-01	2001-02	2002-03	2003-04	2004-05	2005-06	2006-07	2007-08	
England	76	76	75	76	75	76	75	75	74	74	0
North East	80	81	79	79	78	78	78	78	78	77	-2
Gateshead	78	78	79	80	79	78	79	78	79	78	-1
Newcastle	80	83	80	80	82	79	78	81	79	77	-3
North Tees	81	81	79	79	74	78	78	76	77	76	-2
North West	77	75	75	76	75	75	75	75	74	73	-1
Bolton, Bury & Rochdale	76	75	77	74	75	76	73	75	74	71	-3
Chester	81	82	88	84	79	77	79	78	77	79	1
Crewe	83	81	83	83	81	83	82	80	81	80	-1
East Lancashire	75	75	73	75	74	74	74	74	70	73	2
Greater Manchester	75	73	69	71	71	71	70	70	68	68	0
Liverpool	71	73	73	71	74	72	69	72	72	67	-5
Macclesfield	80	79	77	78	77	75	76	79	74	74	0
North Cumbria	81	81	81	81	80	80	81	80	81	80	0
North Lancashire	76	77	78	77	77	77	77	77	76	75	-1
Warrington	77	75	76	77	74	76	76	74	75	75	0
Wigan	79	77	77	81	77	76	78	74	74	76	2
Wirral	81	75	77	82	77	78	79	76	78	78	0
Yorkshire & Humber	77	77	79	76	77	78	77	77	78	75	-3
Barnsley	82	81	82	83	82	83	82	81	79	82	2
Doncaster	81	82	81	81	82	81	79	79	78	77	-1
Humberside	79	76	78	79	75	78	78	76	76	76	0
Leeds	72	74	76	71	73	75	71	76	76	71	-6
North Yorkshire	82	81	80	81	81	81	81	81	80	81	1
Pennine	73	73	78	72	73	78	73	74	79	71	-7
Rotherham	83	79	79	83	80	81	84	81	80	82	2
Sheffield	78	80	79	76	80	79	76	79	77	74	-3
East Midlands	81	81	81	82	81	81	80	80	78	79	1
Boston (South Lincolnshire)	⁽³⁾ 82	78	80	79	78	80
Derby City & South Derbyshire	84	83	83	82	82	82	81	81	81	80	-1
Kettering	81	80	78	79	78	78	80	78	77	78	1
Leicestershire	81	85	81	82	84	81	81	82	78	81	3
Lincolnshire	⁽³⁾	81	78	77	79	2
North Derbyshire & Chesterfield	81	81	80	82	80	80	80	80	77	78	1
North Lincolnshire	⁽³⁾ 80	80	81	83	78	82
North Nottinghamshire	81	80	80	81	81	80	80	79	80	78	-2
Northampton	79	78	78	79	77	78	78	79	79	78	0
Nottingham City	83	81	81	83	80	81	81	78	78	79	1
West Midlands	77	77	76	77	77	76	76	76	76	75	-1
City, Sandwell & Walsall	⁽⁴⁾	71	.
City Hospital (Birmingham)	⁽⁴⁾ 68	69	69	70	69	71	69	68	69	.	.
Dudley & Wolverhampton	75	72	74	73	73	75	74	75	76	73	-3
Hereford & Worcester	82	82	83	82	82	83	80	80	82	80	-2
Mid Staffordshire	⁽⁵⁾ 81	84	81	81
North Staffordshire	76	78	76	75	76	78	75	78	75	74	-1
Shropshire	82	80	81	82	82	78	82	81	82	80	-3
South Birmingham	71	72	66	72	75	70	71	74	68	71	3
South Staffordshire	81	80	80	80	81	80	80	80	79	77	-2
Walsall & Sandwell	⁽⁴⁾ 76	74	70	76	73	69	75	74	69	.	.
Warwickshire, Solihull & Coventry	78	77	78	78	76	77	74	75	74	72	-1
East of England	77	77	76	77	77	77	77	78	77	77	0
Beds & Herts	78	76	75	77	76	74	76	76	74	76	2
Cambridge & Huntingdon	77	77	78	77	76	79	78	78	78	78	-1
Colchester & Chelmsford	80	79	80	81	79	81	80	79	80	80	0
East Suffolk	81	81	80	81	81	81	81	82	81	81	0
Epping	72	74	73	71	75	73	67	76	75	75	0
James Paget	78	78	78	79	81	79	77	80	80	76	-4
Kings Lynn	79	79	79	80	80	80	79	80	79	76	-2
Norfolk & Norwich	82	81	80	80	81	81	80	82	81	80	-1
Peterborough	81	80	78	81	82	80	79	82	79	77	-1
South Essex (Southend)	67	69	66	69	67	69	71	69	68	71	3
West Suffolk	80	79	79	79	80	79	79	80	77	77	0

continued

Table 12: NHS Breast Screening Programme: uptake by women aged 50-64 of invitations to screen, by breast screening unit, 1998-99 to 2007-06⁽¹⁾

Breast Screening Unit	1998-99	1999-2000	2000-01	2001-02	2002-03	2003-04	2004-05	2005-06	2006-07	2007-08	percentages
											(2) Change 2006-07 to 2007-08
England	76	76	75	76	75	76	75	75	74	74	0
London	63	62	62	63	61	63	62	62	61	61	1
Barking, Havering, Redbridge & Brentwood	76	71	75	77	72	76	75	72	74	74	0
Central & East London ⁽⁶⁾	49	50	46	51	51	50	49	54	53	54	0
North London ⁽⁷⁾	65	63	65	64	63	65	62	63	60	60	0
North Middlesex ⁽⁷⁾	60	61	63	63	63
South East London ⁽⁸⁾	65	64	67	65	63	65
South East London (Kings College Hospital) ⁽⁸⁾	61	63	62	60	-2
South East London (Queen Mary's Sidcup) ⁽⁸⁾	67	66	72	68	-3
South West London	71	66	68	66	64	66	68	66	62	65	3
West of London	56	58	54	54	56	56	56	59	54	57	3
Whipps Cross ⁽⁶⁾	73	73	67	74	72	68	72
South East Coast	78	76	76	76	76	77	77	77	75	74	0
Canterbury ⁽⁹⁾	76	78	77	77	75	75	0
Canterbury & Kent ⁽⁹⁾	78	77	75	76
East Sussex/Brighton	77	77	78	77	77	79	76	77	76	71	-6
Guildford	78	72	72	74	74	75	76	76	73	72	0
Maidstone ⁽⁹⁾	78	79	79	80	75	78	2
Medway ⁽⁹⁾	78	78	79	80	75	77	1
Worthing	78	78	78	79	77	78	79	78	75	77	2
South Central	79	78	79	77	77	78	76	77	77	75	-2
Aylesbury	82	79	81	80	80	79	79	80	78	79	1
Basingstoke ⁽¹⁰⁾	78	77	79	79	82	77	79
East Berkshire	78	74	75	73	76	76	74	77	76	74	-2
Isle of Wight	82	81	82	81	81	81	76	80	79	78	-1
Milton Keynes	82	74	78	78	73	78	75	75	77	72	-5
North & Mid Hampshire ⁽¹⁰⁾	79	78	78	0
Oxford	80	79	77	78	77	77	77	78	78	77	-1
Portsmouth	76	78	79	72	75	77	70	75	76	70	-6
Southampton & Salisbury	79	79	81	78	76	79	73	74	76	73	-3
West Berkshire	80	78	80	79	77	79	78	77	79	77	-2
Winchester ⁽¹⁰⁾	79	79	79	79	82	75	79
Wycombe	80	82	81	81	80	81	81	81	80	80	0
South West	79	78	78	78	77	78	78	79	76	76	0
Avon	79	77	78	79	77	77	78	78	70	76	6
Cornwall	78	78	77	76	76	77	76	77	76	76	-1
Dorset	80	78	78	76	76	79	76	78	76	72	-4
Gloucestershire	80	78	78	80	77	78	79	78	78	78	0
North & Eastern Devon	79	79	75	74	76	79	78	79	77	71	-5
Somerset	81	82	81	80	79	80	81	80	79	80	1
South Devon (Torbay) ⁽¹¹⁾	78	79	76	77	0
West Devon & East Cornwall	79	77	79	80	78	78	79	81	80	78	-2
Wiltshire	80	79	78	79	79	79	79	80	78	79	1

Source: KC62 (Part 1, Tables A, B, C1 and C2)

⁽¹⁾ This is the grouping used in Table 3 (First & all routine invitations)

⁽²⁾ All percentages are shown rounded to the nearest whole number;

the difference between 2006-07 and 2007-08 uptake are calculated using the exact percentages for those years and then rounded

⁽³⁾ Data for Boston and North Lincolnshire are now provided in a single return from Lincolnshire BSU

⁽⁴⁾ Data for City Hospital (Birmingham) and Walsall & Sandwell are now provided in a single return from City, Sandwell and Walsall BSU

⁽⁵⁾ Uptake based on data from Mid Staffordshire and South East Staffordshire

⁽⁶⁾ Data for Whipps Cross are now included with Central & East London

⁽⁷⁾ Data for North Middlesex are now included with North London

⁽⁸⁾ Data for South East London are now provided by Kings College and Queen Mary's separately

⁽⁹⁾ Data for Canterbury & Kent are now provided by Canterbury, Maidstone and Medway separately

⁽¹⁰⁾ Data for Winchester and Basingstoke are now provided by North & Mid Hampshire

⁽¹¹⁾ South Devon (Torbay) began screening in 2004-05

Table 12a: NHS Breast Screening Programme: uptake by women aged 50-70 of invitations to screen, by breast screening unit, 2002-03 to 2007-06⁽¹⁾

Breast Screening Unit	2002-03	2003-04	2004-05	2005-06	2006-07	2007-08	percentages
							(2) Change 2006-07 to 2007-08
England	75	75	74	75	74	73	0
North East	78	77	76	77	78	76	-2
Gateshead	78	77	76	77	78	77	-1
Newcastle	82	78	77	80	79	76	-3
North Tees	74	76	76	75	76	75	-1
North West	75	75	74	74	73	72	-1
Bolton, Bury & Rochdale	74	74	72	74	74	71	-3
Chester	79	77	79	78	76	78	2
Crewe	80	82	81	79	81	80	-1
East Lancashire	74	73	73	73	70	72	2
Greater Manchester	70	70	69	69	67	67	0
Liverpool	74	72	68	71	70	66	-4
Macclesfield	76	74	75	78	73	74	1
North Cumbria	80	80	81	80	80	80	0
North Lancashire	78	77	77	76	75	75	-1
Warrington	74	76	75	74	74	74	0
Wigan	77	76	77	73	74	75	2
Wirral	77	77	77	75	77	77	0
Yorkshire & Humber	76	78	76	77	77	75	-3
Barnsley	82	82	81	80	79	81	3
Doncaster	82	81	79	79	77	76	-1
Humberside	75	77	77	75	75	75	0
Leeds	72	74	70	75	76	70	-6
North Yorkshire	81	81	81	81	79	80	1
Pennine	73	78	73	73	78	71	-7
Rotherham	79	79	82	80	78	81	2
Sheffield	80	79	76	78	77	74	-3
East Midlands	80	80	80	79	78	79	1
Boston (South Lincolnshire)	⁽³⁾ 78	79
Derby City & South Derbyshire	82	82	81	81	80	80	-1
Kettering	78	78	79	77	77	78	1
Leicestershire	84	81	81	81	77	80	3
Lincolnshire	⁽³⁾ .	.	81	78	76	78	2
North Derbyshire & Chesterfield	80	80	79	79	76	77	1
North Lincolnshire	⁽³⁾ 78	82
North Nottinghamshire	81	80	79	78	79	77	-2
Northampton	77	78	77	78	78	78	0
Nottingham City	78	80	80	77	78	78	1
West Midlands	76	76	75	76	75	74	-1
City, Sandwell & Walsall	⁽⁴⁾	71	.
City Hospital (Birmingham)	⁽⁴⁾ 69	71	68	68	69	.	.
Dudley & Wolverhampton	73	73	73	74	75	72	-3
Hereford & Worcester	82	83	80	80	81	80	-2
North Staffordshire	76	76	74	77	74	73	-1
Shropshire	82	78	82	80	82	79	-3
South Birmingham	74	68	70	73	68	71	3
South Staffordshire	81	80	80	79	78	76	-2
Walsall & Sandwell	⁽⁴⁾ 73	69	75	74	68	.	.
Warwickshire, Solihull & Coventry	75	77	74	74	73	72	-1
East of England	77	76	76	77	76	77	1
Beds & Herts	76	74	76	76	73	75	2
Cambridge & Huntingdon	76	79	76	77	78	77	0
Colchester & Chelmsford	79	81	79	79	79	80	1
East Suffolk	80	79	81	81	80	81	0
Epping	75	71	66	76	74	75	1
James Paget	81	78	76	80	79	76	-3
Kings Lynn	80	79	78	80	77	76	-1
Norfolk & Norwich	79	79	79	81	80	80	0
Peterborough	81	79	78	81	79	78	-1
South Essex (Southend)	67	69	70	69	68	71	3
West Suffolk	80	78	78	79	77	77	1

Table 12a: NHS Breast Screening Programme: uptake by women aged 50-70 of invitations to screen, by breast screening unit, 2002-03 to 2007-08⁽¹⁾

Breast Screening Unit	2002-03	2003-04	2004-05	2005-06	2006-07	2007-08	percentages
							(2) Change 2006-07 to 2007-08
England	75	75	74	75	74	73	0
London	61	63	61	62	60	61	0
Barking, Havering, Redbridge & Brentwood	72	76	75	70	73	73	0
Central & East London ⁽⁵⁾	51	50	48	53	52	52	0
North London ⁽⁶⁾	63	65	62	63	59	59	0
North Middlesex ⁽⁶⁾	63
South East London ⁽⁷⁾	61	64
South East London (Kings College Hospital) ⁽⁷⁾	.	.	59	62	62	59	-2
South East London (Queen Mary's Sidcup) ⁽⁷⁾	.	.	67	66	71	68	-3
South West London	64	66	67	65	62	64	3
West of London	56	56	56	58	54	56	2
Whipps Cross ⁽⁵⁾	72	67	70
South East Coast	76	77	77	77	74	74	0
Canterbury	76	78	77	77	75	75	0
East Sussex/Brighton	77	79	75	76	77	71	-6
Guildford	74	75	75	75	72	72	0
Maidstone	78	79	79	80	76	78	2
Medway	78	78	79	79	75	76	1
Worthing	77	78	79	78	74	77	3
South Central	77	78	76	77	77	75	-2
Aylesbury	80	79	79	79	77	79	2
Basingstoke ⁽⁸⁾	81	77	79
East Berkshire	75	76	74	77	76	74	-2
Isle of Wight	81	81	75	79	78	77	-1
Milton Keynes	72	77	75	74	76	72	-4
North & Mid Hampshire ⁽⁸⁾	.	.	.	79	78	77	-1
Oxford	77	77	77	78	77	76	-1
Portsmouth	75	77	69	75	76	70	-7
Southampton & Salisbury	76	79	73	74	76	72	-4
West Berkshire	77	79	78	76	78	77	-1
Winchester ⁽⁸⁾	82	75	79
Wycombe	80	81	81	81	80	80	0
South West	77	78	78	78	75	76	0
Avon	78	77	78	78	70	75	5
Cornwall	76	77	76	76	75	75	0
Dorset	75	78	76	78	76	72	-5
Gloucestershire	76	77	79	77	78	78	0
North & Eastern Devon	76	79	78	78	76	71	-4
Somerset	79	80	80	80	79	80	1
South Devon (Torbay) ⁽⁹⁾	.	.	78	78	76	76	0
West Devon & East Cornwall	78	78	79	80	79	78	-1
Wiltshire	79	78	79	80	77	78	1

Source: KC62 (Part 1, Tables A, B, C1 and C2)

⁽¹⁾ This is the grouping used in Table 3 (First & all routine invitations)

⁽²⁾ All percentages are shown rounded to the nearest whole number;

the difference between 2006-07 and 2007-08 uptake are calculated using the exact percentages for those years and then rounded

⁽³⁾ Data for Boston and North Lincolnshire are now provided in a single return from Lincolnshire BSU

⁽⁴⁾ Data for City Hospital (Birmingham) and Walsall & Sandwell are now provided in a single return from City, Sandwell and Walsall BSU

⁽⁵⁾ Data for Whipps Cross are now included with Central & East London

⁽⁶⁾ Data for North Middlesex are now included with North London

⁽⁷⁾ Data for South East London are now provided by Kings College and Queen Mary's separately

⁽⁸⁾ Data for Winchester and Basingstoke are now provided by North & Mid Hampshire

⁽⁹⁾ South Devon (Torbay) began screening in 2004-05

Table 13: NHS Breast Screening Programme: uptake of women aged 50-64 by type of invitation and breast screening unit, 2007-08

Breast Screening Unit	percentages						
	Invitation type					Invitation type grouping	
	First invitation for screening	Routine invitation (previous non-attender)	Routine invitation (within 5 yrs)	Routine invitation (more than 5 yrs)	Early Recall Invitations	First & routine invitation (within 5 yrs)	First & all routine invitations ⁽¹⁾
England	69	19	87	49	99	83	74
North East	75	19	89	48	100	86	77
Gateshead	77	16	89	47	100	86	78
Newcastle	74	20	89	47	100	86	77
North Tees	73	21	89	49	100	85	76
North West	69	18	87	48	99	83	73
Bolton, Bury & Rochdale	68	17	86	43	100	82	71
Chester	75	19	90	38	-	87	79
Crewe	79	13	91	39	100	89	80
East Lancashire	71	19	86	49	100	83	73
Greater Manchester	65	19	86	44	100	79	68
Liverpool	66	16	85	40	89	80	67
Macclesfield	71	20	87	50	100	83	74
North Cumbria	78	20	91	57	100	88	80
North Lancashire	69	18	88	60	100	84	75
Warrington	72	18	88	45	100	85	75
Wigan	74	19	88	53	100	85	76
Wirral	75	18	90	39	100	87	78
Yorkshire & Humber	72	20	88	45	99	85	75
Barnsley	81	21	91	47	-	89	82
Doncaster	74	18	88	45	100	85	77
Humberside	74	17	89	48	100	86	76
Leeds	66	20	87	44	100	81	71
North Yorkshire	76	21	91	47	100	88	81
Pennine	69	23	86	43	96	82	71
Rotherham	79	20	92	42	100	89	82
Sheffield	71	18	87	44	100	84	74
East Midlands	76	21	90	51	100	87	79
Derby City & South Derbyshire	78	18	90	58	100	88	80
Kettering	79	18	88	44	100	86	78
Leicestershire	77	22	91	58	100	88	81
Lincolnshire	73	24	88	47	100	85	79
North Derbyshire & Chesterfield	75	22	89	47	100	87	78
North Nottinghamshire	77	23	89	45	100	86	78
Northampton	75	19	90	46	100	87	78
Nottingham City	74	23	90	51	100	87	79
West Midlands	71	18	88	46	99	85	75
City, Sandwell & Walsall	63	21	86	43	100	81	71
Dudley & Wolverhampton	71	18	89	47	100	85	73
Hereford & Worcester	79	18	91	43	100	89	80
North Staffordshire	75	17	88	45	100	86	74
Shropshire	78	17	92	48	100	88	80
South Birmingham	67	19	87	46	100	82	71
South Staffordshire	72	19	89	49	-	86	77
Warwickshire, Solihull & Coventry	68	18	85	49	86	82	72
East of England	72	22	89	56	100	85	77
Beds & Herts	72	21	88	44	95	84	76
Cambridge & Huntingdon	71	25	89	61	100	85	78
Colchester & Chelmsford	76	18	89	46	100	88	80
East Suffolk	77	17	91	51	100	89	81
Epping	71	26	87	74	100	81	75
James Paget	73	24	88	61	100	83	76
Kings Lynn	72	18	88	68	100	83	76
Norfolk & Norwich	76	21	92	66	100	88	80
Peterborough	72	25	90	62	100	85	77
South Essex (Southend)	65	25	87	40	100	82	71
West Suffolk	73	16	90	60	100	86	77

continued

Table 13: NHS Breast Screening Programme: uptake of women aged 50-64 by type of invitation and breast screening unit, 2007-08

percentages

Breast Screening Unit	Invitation type					Invitation type grouping	
	First invitation for screening	Routine invitation (previous non-attender)	Routine invitation (within 5 yrs)	Routine invitation (more than 5 yrs)	Early Recall Invitations	First & routine invitation (within 5 yrs)	First & all routine invitations ⁽¹⁾
England	69	19	87	49	99	83	74
London	56	17	79	40	100	73	61
Barking, Havering, Redbridge & Brentwood	63	21	86	53	100	81	74
Central & East London	49	17	74	36	100	66	54
North London	56	18	76	37	100	70	60
South East London (Kings College Hospital)	56	15	80	33	100	73	60
South East London (Queen Mary's Sidcup)	66	19	85	41	100	80	68
South West London	60	17	81	41	100	76	65
West of London	53	17	77	42	100	69	57
South East Coast	69	20	87	53	99	83	74
Canterbury	70	22	88	42	100	84	75
East Sussex/Brighton	67	18	84	33	100	80	71
Guildford	65	19	85	63	89	80	72
Maidstone	74	23	89	45	100	86	78
Medway	73	21	89	44	100	85	77
Worthing	73	21	88	57	100	85	77
South Central	71	22	87	50	99	84	75
Aylesbury	78	22	88	39	100	87	79
East Berkshire	72	21	86	43	96	83	74
Isle of Wight	72	19	88	65	100	85	78
Milton Keynes	72	19	86	49	100	82	72
North & Mid Hampshire	75	24	89	55	100	86	78
Oxford	73	21	88	54	100	85	77
Portsmouth	66	22	86	51	100	81	70
Southampton & Salisbury	65	24	87	46	98	82	73
West Berkshire	72	22	89	47	100	85	77
Wycombe	77	22	88	39	100	86	80
South West	70	19	88	54	98	85	76
Avon	73	16	88	38	100	85	76
Cornwall	72	26	88	53	100	85	76
Dorset	67	17	85	56	97	81	72
Gloucestershire	74	20	90	44	100	87	78
North & Eastern Devon	56	17	86	64	98	79	71
Somerset	74	24	91	60	93	88	80
South Devon (Torbay)	70	21	89	49	100	86	77
West Devon & East Cornwall	75	20	89	55	100	86	78
Wiltshire	75	20	90	56	96	86	79

Source : KC62 (Tables A - D, Part 1)

⁽¹⁾ This is the grouping used in Table 3 (First & all routine invitations)

"-" Denotes no invitations sent in the period

Copyright © 2009, The Health and Social Care Information Centre. All rights reserved

Table 13a: NHS Breast Screening Programme: uptake of women aged 50-70 by type of invitation and breast screening unit, 2007-08

percentages

Breast Screening Unit	Invitation type					Invitation type grouping	
	First invitation for screening	Routine invitation (previous non-attender)	Routine invitation (within 5 yrs)	Routine invitation (more than 5 yrs)	Early Recall Invitations	First & routine invitation (within 5 yrs)	First & all routine invitations ⁽¹⁾
England	68	17	87	52	99	84	73
North East	74	16	89	42	100	86	76
Gateshead	77	13	88	41	100	86	77
Newcastle	73	17	89	42	100	86	76
North Tees	73	18	88	44	100	85	75
North West	69	16	87	50	100	84	72
Bolton, Bury & Rochdale	67	15	86	39	100	83	71
Chester	74	17	91	54	-	88	78
Crewe	79	12	91	34	100	89	80
East Lancashire	70	16	86	44	100	83	72
Greater Manchester	64	16	86	39	100	80	67
Liverpool	66	14	85	47	90	81	66
Macclesfield	71	18	87	44	100	84	74
North Cumbria	77	19	91	61	100	88	80
North Lancashire	68	15	88	64	100	84	75
Warrington	72	15	88	51	100	85	74
Wigan	74	17	88	59	100	85	75
Wirral	75	15	90	36	100	88	77
Yorkshire & Humber	71	18	88	53	98	85	75
Barnsley	80	19	91	46	-	89	81
Doncaster	73	16	88	51	100	86	76
Humberside	74	14	89	58	100	86	75
Leeds	65	17	87	39	98	82	70
North Yorkshire	76	19	91	61	100	89	80
Pennine	68	21	86	56	94	83	71
Rotherham	79	17	92	35	100	90	81
Sheffield	69	16	88	59	100	84	74
East Midlands	75	19	90	53	100	87	79
Derby City & South Derbyshire	77	16	90	53	100	88	80
Kettering	78	16	88	40	100	87	78
Leicestershire	76	19	91	66	100	88	80
Lincolnshire	73	21	88	59	100	85	78
North Derbyshire & Chesterfield	75	20	89	43	100	87	77
North Nottinghamshire	76	22	89	39	100	87	77
Northampton	75	17	90	44	100	87	78
Nottingham City	74	20	90	46	100	87	78
West Midlands	70	16	88	53	99	85	74
City, Sandwell & Walsall	62	19	86	57	100	81	71
Dudley & Wolverhampton	71	15	89	40	100	85	72
Hereford & Worcester	78	16	91	59	100	89	80
North Staffordshire	75	15	88	40	100	86	73
Shropshire	77	15	92	66	100	89	79
South Birmingham	66	17	87	41	100	83	71
South Staffordshire	70	17	89	59	-	87	76
Warwickshire, Solihull & Coventry	68	16	85	44	91	82	72
East of England	71	19	89	54	100	86	77
Beds & Herts	71	18	88	42	97	85	75
Cambridge & Huntingdon	70	24	89	60	100	85	77
Colchester & Chelmsford	75	16	90	46	100	88	80
East Suffolk	77	16	91	51	100	89	81
Epping	70	23	87	72	100	82	75
James Paget	72	18	89	52	100	86	76
Kings Lynn	71	13	89	56	100	85	76
Norfolk & Norwich	76	17	92	59	100	89	80
Peterborough	72	22	90	54	100	86	78
South Essex (Southend)	64	22	87	50	100	83	71
West Suffolk	72	13	90	53	100	87	77

continued

Table 13a: NHS Breast Screening Programme: uptake of women aged 50-70 by type of invitation and breast screening unit, 2007-08

percentages

Breast Screening Unit	Invitation type					Invitation type grouping	
	First invitation for screening	Routine invitation (previous non-attender)	Routine invitation (within 5 yrs)	Routine invitation (more than 5 yrs)	Early Recall Invitations	First & routine invitation (within 5 yrs)	First & all routine invitations ⁽¹⁾
England	68	17	87	52	99	84	73
London	55	16	80	44	100	73	61
Barking, Havering, Redbridge & Brentwood	61	19	86	55	100	81	73
Central & East London	48	15	74	37	100	66	52
North London	55	16	76	46	100	70	59
South East London (Kings College Hospital)	54	13	81	30	100	74	59
South East London (Queen Mary's Sidcup)	64	17	84	37	100	80	68
South West London	59	16	81	48	100	76	64
West of London	52	16	77	44	100	70	56
South East Coast	68	18	87	59	100	84	74
Canterbury	68	20	88	58	100	85	75
East Sussex/Brighton	66	16	85	32	100	81	71
Guildford	64	17	85	59	91	81	72
Maidstone	73	21	89	64	100	86	78
Medway	71	20	89	62	100	86	76
Worthing	71	19	88	65	100	85	77
South Central	70	20	88	53	99	84	75
Aylesbury	78	19	88	37	100	87	79
East Berkshire	71	19	86	44	97	84	74
Isle of Wight	71	16	88	63	100	86	77
Milton Keynes	71	18	86	45	100	83	72
North & Mid Hampshire	74	22	89	58	100	86	77
Oxford	72	19	88	59	100	85	76
Portsmouth	65	19	87	46	100	82	70
Southampton & Salisbury	63	21	87	58	96	82	72
West Berkshire	71	20	89	53	100	86	77
Wycombe	77	20	89	52	100	87	80
South West	69	17	88	55	98	85	76
Avon	72	14	88	47	100	85	75
Cornwall	71	22	88	55	100	85	75
Dorset	66	15	85	55	98	82	72
Gloucestershire	73	17	90	42	100	87	78
North & Eastern Devon	54	14	86	63	99	80	71
Somerset	73	21	91	62	94	88	80
South Devon (Torbay)	68	18	89	53	100	86	76
West Devon & East Cornwall	75	18	89	54	100	87	78
Wiltshire	74	18	90	58	97	87	78

Source : KC62 (Tables A - D, Part 1)

⁽¹⁾ This is the grouping used in Table 3 (First & all routine invitations)

"-" Denotes no invitations sent in the period

Copyright © 2009, The Health and Social Care Information Centre. All rights reserved

Table 14: NHS Breast Screening Programme: Selected diagnostic and outcome statistics for women aged 50-64, by breast screening unit 2007-08

Breast Screening Unit	All women (T)			
	Screened	Benign Biopsy rate per 1,000 ⁽¹⁾	Preoperative Diagnosis rate % ⁽²⁾	Assessment rate % ⁽³⁾
England	1,278,775	1.0	94.7	4.6
North East	70,766	1.0	95.1	3.5
Gateshead	22,586	0.8	94.6	4.1
Newcastle	23,747	1.1	96.3	2.8
North Tees	24,433	1.0	94.6	3.7
North West	177,975	1.0	95.3	4.7
Bolton, Bury & Rochdale	16,421	1.0	97.0	5.0
Chester	5,399	0.9	94.7	4.4
Crewe	7,727	1.4	98.2	5.4
East Lancashire	13,017	0.9	95.0	2.5
Greater Manchester	31,135	0.8	97.5	4.7
Liverpool	20,998	1.7	93.1	4.5
Macclesfield	12,332	0.9	94.3	4.7
North Cumbria	9,791	1.1	90.6	5.4
North Lancashire	21,657	0.9	97.0	4.6
Warrington	14,228	1.1	97.2	5.8
Wigan	16,026	1.1	88.7	4.6
Wirral	9,244	0.5	95.2	5.6
Yorkshire & Humber	138,300	0.7	96.6	3.9
Barnsley	6,337	0.6	100.0	4.3
Doncaster	12,782	0.2	98.6	2.1
Humberside	27,028	0.3	98.6	3.4
Leeds	26,864	1.3	94.0	4.5
North Yorkshire	20,889	0.6	96.8	3.8
Pennine	25,624	0.9	96.3	4.2
Rotherham	6,963	0.4	95.8	4.9
Sheffield	11,813	0.7	95.4	4.5
East Midlands	107,832	0.9	96.5	4.4
Derby City & South Derbyshire	14,942	0.1	99.2	3.4
Kettering	8,438	1.4	96.8	5.3
Leicestershire	24,380	1.6	93.3	4.4
Lincolnshire	18,514	0.5	96.2	5.7
North Derbyshire & Chesterfield	10,109	0.1	96.1	5.2
North Nottinghamshire	6,547	1.2	100.0	3.4
Northampton	9,356	0.2	95.0	4.1
Nottingham City	15,546	1.2	99.0	3.4
West Midlands	137,539	0.8	94.5	4.2
City, Sandwell & Walsall	22,790	0.9	93.3	5.7
Dudley & Wolverhampton	12,002	0.8	94.4	5.5
Hereford & Worcester	25,517	0.9	94.0	3.3
North Staffordshire	11,377	0.7	92.2	4.4
Shropshire	14,636	1.0	90.9	4.6
South Birmingham	7,538	1.3	94.3	4.5
North Staffordshire	16,792	0.7	96.4	2.4
Warwickshire, Solihull & Coventry	26,887	0.5	98.3	3.9
East of England	145,877	1.2	93.2	4.7
Beds & Herts	34,372	1.5	90.8	5.4
Cambridge & Huntingdon	13,372	1.9	97.0	4.5
Colchester & Chelmsford	21,041	0.4	95.7	3.2
East Suffolk	12,805	0.9	96.2	3.0
Epping	9,726	1.1	95.3	3.1
James Paget	4,777	0.8	93.1	6.1
Kings Lynn	4,896	1.6	81.6	5.7
Norfolk & Norwich	14,095	1.3	96.8	4.3
Peterborough	6,662	1.5	91.7	8.3
South Essex (Southend)	16,859	0.7	93.6	4.7
West Suffolk	7,272	1.4	87.5	7.5
London	138,254	1.2	94.7	5.0
Barking, Havering, Redbridge & Brentwood	18,660	0.9	93.6	5.3
Central & East London	19,594	1.3	97.0	4.1
North London	21,047	1.5	93.9	6.5
South East London (Kings College Hospital)	17,428	0.3	96.4	3.9
South East London (Queen Mary's Sidcup)	9,380	1.7	95.7	5.2
South West London	27,733	1.5	95.2	4.8
West of London	24,422	1.1	91.8	5.4
South East Coast	114,375	1.0	94.3	4.5
Canterbury	17,850	1.6	89.7	3.5
East Sussex/Brighton	15,757	1.0	90.1	2.9
Guildford	31,667	1.1	94.5	5.3
Maidstone	12,408	0.7	100.0	4.2
Medway	14,561	0.9	97.7	6.6
Worthing	22,112	0.5	93.5	4.0
South Central	103,742	1.1	93.2	5.4
Aylesbury	4,046	1.0	86.7	5.0
East Berkshire	10,580	1.5	90.0	5.9
Isle of Wight	3,539	0.6	96.2	6.8
Milton Keynes	5,914	1.0	100.0	4.0
North & Mid Hampshire	11,806	2.3	90.0	8.1
Oxford	16,337	0.9	99.1	6.2
Portsmouth	14,099	0.6	93.6	4.4
Southampton & Salisbury	13,787	1.2	90.9	6.3
West Berkshire	13,996	0.9	94.4	2.8
Wycombe	9,638	0.5	90.5	4.9
South West	144,115	1.1	93.4	5.2
Avon	28,491	0.8	95.2	4.3
Cornwall	14,114	2.0	82.5	7.0
Dorset	21,163	0.7	96.6	6.2
Gloucestershire	15,531	1.5	91.0	4.8
North & Eastern Devon	14,637	1.3	88.9	4.2
Somerset	14,487	0.2	97.9	4.8
South Devon (Torbay)	7,795	1.2	95.2	4.3
West Devon & East Cornwall	13,421	1.6	96.5	7.9
Wiltshire	14,476	0.7	98.5	3.3

Source: KC62 (Parts 1 and 2, Table T)

⁽¹⁾ Benign Biopsy rate: number of benign biopsies per 1,000 women screened

⁽²⁾ Preoperative Diagnosis rate: percentage of cancers diagnosed cytologically or histologically without surgery (% of all cancers diagnosed)

⁽³⁾ Assessment rate: percentage of women referred for assessment

Table 14a: NHS Breast Screening Programme: Selected diagnostic and outcome statistics for women aged 50-70, by breast screening unit 2007-08

Breast Screening Unit	All women (T)			
	Screened	Benign Biopsy rate per 1,000 ⁽¹⁾	Preoperative Diagnosis rate % ⁽²⁾	Assessment rate % ⁽³⁾
England	1,625,063	0.9	95.0	4.5
North East	89,895	0.9	94.9	3.5
Gateshead	28,702	0.7	95.2	4.0
Newcastle	30,051	1.0	95.2	2.8
North Tees	31,142	1.0	94.3	3.7
North West	227,528	1.0	95.7	4.6
Bolton, Bury & Rochdale	20,868	0.9	97.8	4.7
Chester	7,031	0.7	96.9	4.5
Crewe	9,757	1.2	98.7	5.1
East Lancashire	16,199	0.9	96.5	2.5
Greater Manchester	40,059	0.7	97.8	4.5
Liverpool	26,514	1.5	94.2	4.4
Macclesfield	15,687	0.8	95.5	4.6
North Cumbria	12,382	1.1	89.3	5.7
North Lancashire	28,269	1.0	98.0	4.6
Warrington	17,986	1.0	95.5	5.7
Wigan	20,770	1.1	90.3	4.4
Wirral	12,006	0.4	92.5	5.2
Yorkshire & Humber	176,050	0.6	97.1	3.9
Barnsley	8,030	1.0	100.0	4.0
Doncaster	16,008	0.3	99.0	2.1
Humberside	34,685	0.3	99.0	3.7
Leeds	34,132	1.2	94.3	4.4
North Yorkshire	26,700	0.5	97.4	3.8
Pennine	32,325	0.7	96.8	4.3
Rotherham	8,783	0.3	95.0	4.8
Sheffield	15,387	0.6	96.9	4.4
East Midlands	135,637	0.8	96.1	4.3
Derby City & South Derbyshire	18,603	0.1	98.8	3.4
Kettering	10,615	1.3	96.3	5.0
Leicestershire	30,446	1.4	93.4	4.4
Lincolnshire	23,589	0.6	95.9	5.7
North Derbyshire & Chesterfield	12,739	0.1	97.1	4.9
North Nottinghamshire	8,278	1.2	98.6	3.2
Northampton	11,647	0.2	94.5	4.0
Nottingham City	19,720	1.1	97.7	3.2
West Midlands	175,634	0.7	95.1	4.1
City, Sandwell & Walsall	29,367	0.8	94.3	5.5
Dudley & Wolverhampton	15,295	0.8	94.8	5.2
Hereford & Worcester	32,387	0.8	95.0	3.4
North Staffordshire	14,535	0.7	94.0	4.2
Shropshire	19,381	0.8	93.0	4.5
South Birmingham	9,586	1.1	94.6	4.3
South Staffordshire	21,156	0.7	96.2	2.4
Warwickshire, Solihull & Coventry	33,927	0.5	97.5	3.8
East of England	187,497	1.1	93.8	4.6
Beds & Herts	43,253	1.4	91.4	5.2
Cambridge & Huntingdon	14,590	1.9	96.4	4.5
Colchester & Chelmsford	27,086	0.5	95.6	3.0
East Suffolk	13,273	0.9	96.4	3.0
Epping	12,133	1.1	95.9	3.2
James Paget	7,396	0.8	96.1	5.2
Kings Lynn	8,046	1.6	88.6	5.4
Norfolk & Norwich	20,114	1.2	95.8	4.2
Peterborough	9,727	1.6	93.8	7.5
South Essex (Southeast)	21,687	0.6	95.0	4.5
West Suffolk	10,192	1.1	88.3	6.7
London	172,909	1.1	94.9	4.9
Barking, Havering, Redbridge & Brentwood	23,514	0.9	94.4	5.2
Central & East London	24,324	1.0	97.9	3.9
North London	26,547	1.4	93.1	6.4
South East London (Kings College Hospital)	22,055	0.3	96.8	3.7
South East London (Queen Mary's Sidcup)	11,633	1.5	95.2	4.9
South West London	34,439	1.4	94.7	4.8
West of London	30,397	1.0	92.5	5.0
South East Coast	146,215	1.0	94.2	4.5
Canterbury	23,012	1.6	91.2	3.6
East Sussex/Brighton	20,315	1.1	91.1	2.9
Guildford	39,745	1.1	94.1	5.1
Maidstone	15,913	0.8	99.3	4.3
Medway	18,522	1.1	96.8	6.9
Worthing	28,708	0.5	93.3	4.1
South Central	130,452	0.9	93.9	5.3
Aylesbury	4,951	1.0	89.2	4.9
East Berkshire	13,148	1.4	91.4	5.6
Isle of Wight	4,602	0.4	94.6	6.8
Milton Keynes	6,949	0.9	97.9	4.0
North & Mid Hampshire	14,632	2.1	92.8	7.9
Oxford	20,712	0.7	98.2	5.9
Portsmouth	18,004	0.4	94.2	4.2
Southampton & Salisbury	17,756	1.1	92.1	6.2
West Berkshire	17,386	0.7	94.4	2.8
Wychcombe	12,312	0.5	91.9	4.5
South West	183,246	1.0	94.0	5.0
Avon	35,675	0.8	95.3	4.1
Cornwall	17,833	1.9	85.8	6.6
Dorset	27,084	0.7	96.7	6.0
Gloucestershire	19,669	1.3	91.6	4.6
North & Eastern Devon	19,244	1.3	90.5	4.2
Somerset	18,765	0.2	96.5	4.6
South Devon (Torbay)	10,064	1.0	95.2	4.2
West Devon & East Cornwall	17,000	1.5	96.8	7.4
Wiltshire	17,912	0.6	98.0	3.1

Source: KC62 (Parts 1 and 2, Table T)

⁽¹⁾ Benign Biopsy rate: number of benign biopsies per 1,000 women screened⁽²⁾ Preoperative Diagnosis rate: percentage of cancers diagnosed cytologically or histologically without surgery (% of all cancers diagnosed)⁽³⁾ Assessment rate: percentage of women referred for assessment

Copyright © 2009, The Health and Social Care Information Centre. All rights reserved

Table 15: NHS Breast Screening Programme: Selected diagnostic and outcome statistics for women aged 50-64, by breast screening unit 2007-08

Breast Screening Unit	Prevalent round (A+B)					Incident round (C1)				
	Benign Biopsy rate ⁽¹⁾ per 1,000	Preoperative Diagnosis rate % ⁽²⁾	Small cancers detected ⁽³⁾ (<15mm) per 1,000	Standardised detection ratio (SDR) ⁽⁴⁾	Assessment rate % ⁽⁵⁾	Benign Biopsy rate ⁽¹⁾ per 1,000	Preoperative Diagnosis rate % ⁽²⁾	Small cancers detected ⁽³⁾ (<15mm) per 1,000	Standardised detection ratio (SDR) ⁽⁴⁾	Assessment rate % ⁽⁵⁾
England	2.3	91.2	2.6	1.42	8.8	0.6	95.8	2.9	1.36	3.3
North East	2.4	88.5	2.3	1.25	7.0	0.6	97.7	2.8	1.34	2.5
Gateshead	1.7	75.8	2.3	1.01	8.0	0.6	99.2	3.5	1.56	2.8
Newcastle	3.4	90.5	2.2	1.49	5.7	0.6	99.1	2.2	1.23	2.0
North Tees	2.3	97.4	2.5	1.26	7.0	0.6	94.4	2.8	1.26	2.6
North West	2.3	90.9	2.3	1.34	8.7	0.7	96.9	3.0	1.44	3.4
Bolton, Bury & Rochdale	3.1	85.7	2.2	1.51	10.4	0.4	100.0	2.7	1.48	3.5
Chester	0.0	100.0	6.3	2.68	8.5	1.2	92.3	2.1	1.37	3.5
Crewe	2.2	90.0	3.0	1.55	12.5	1.2	100.0	3.3	1.50	3.6
East Lancashire	2.6	87.0	3.0	1.43	4.3	0.5	97.9	2.3	1.14	1.8
Greater Manchester	1.8	97.1	2.8	1.52	7.7	0.4	97.5	3.5	1.47	3.3
Liverpool	4.2	84.4	1.0	1.12	8.8	0.9	96.0	2.6	1.38	3.0
Macclesfield	1.5	88.0	4.2	1.76	8.4	0.7	96.6	2.7	1.39	3.4
North Cumbria	2.7	100.0	0.5	0.68	10.2	0.7	90.2	2.3	1.08	4.0
North Lancashire	1.4	95.5	1.7	1.12	7.8	0.8	97.7	4.6	1.84	3.7
Warrington	1.8	92.9	0.7	1.01	11.2	0.7	98.8	2.3	1.70	4.1
Wigan	3.6	81.3	1.5	1.09	9.1	0.4	92.8	2.9	1.30	3.0
Wirral	0.0	90.0	4.1	1.39	10.9	0.7	95.7	2.5	1.29	4.1
Yorkshire & Humber	1.3	94.1	2.8	1.52	7.0	0.5	97.0	2.8	1.36	2.9
Barnsley	1.7	100.0	3.4	1.33	9.6	0.4	100.0	2.9	1.25	3.0
Doncaster	1.2	100.0	1.2	0.86	4.1	0.0	98.1	2.2	1.15	1.5
Humberside	0.4	100.0	3.8	1.80	4.6	0.3	98.1	2.7	1.39	3.0
Leeds	2.2	90.0	2.2	1.35	8.1	1.1	94.3	3.2	1.60	3.2
North Yorkshire	1.3	88.9	2.7	1.66	6.8	0.4	99.1	2.5	1.27	3.0
Penine	1.5	95.7	2.9	1.50	7.2	0.6	96.1	3.1	1.25	3.0
Rotherham	0.0	100.0	0.8	0.79	9.0	0.6	95.1	3.7	1.72	3.5
Sheffield	1.4	89.3	4.1	2.41	10.4	0.6	98.2	2.7	1.16	2.9
East Midlands	2.3	94.4	2.3	1.30	8.1	0.5	97.2	3.5	1.51	3.3
Derby City & South Derbyshire	0.0	95.2	2.4	1.66	6.3	0.2	100.0	3.8	1.68	2.7
Kettering	4.5	100.0	2.3	0.78	10.2	0.6	97.9	3.2	1.46	3.9
Leicestershire	4.8	93.9	1.8	1.45	7.2	0.8	93.4	3.8	1.49	3.6
Lincolnshire	0.8	89.7	1.9	1.27	10.2	0.4	97.3	3.5	1.62	4.3
North Derbyshire & Chesterfield	0.0	100.0	3.4	1.46	11.3	0.0	95.7	2.5	1.12	3.6
North Nottinghamshire	4.0	100.0	1.6	1.24	7.3	0.4	100.0	3.1	1.57	2.3
Northampton	0.6	84.6	2.3	1.18	7.2	0.1	98.2	3.5	1.67	3.0
Nottingham City	2.8	100.0	2.8	1.03	6.8	0.8	100.0	3.9	1.43	2.5
West Midlands	2.2	90.8	2.5	1.52	8.7	0.5	95.7	2.8	1.31	2.9
City, Sandwell & Walsall	2.2	93.8	2.0	1.51	11.2	0.6	92.0	2.0	1.15	4.0
Dudley & Wolverhampton	0.8	80.0	3.6	1.63	11.4	0.9	98.4	3.0	1.65	3.8
Hereford & Worcester	2.2	92.5	2.2	1.51	5.9	0.5	94.4	3.8	1.41	2.3
North Staffordshire	1.9	84.0	3.8	2.17	9.7	0.5	96.6	3.4	1.43	2.8
Shropshire	2.2	81.5	1.9	1.76	10.9	0.6	93.8	2.8	1.22	2.8
South Birmingham	6.1	100.0	4.3	2.15	8.8	0.0	90.3	3.3	1.12	2.9
South Staffordshire	2.5	100.0	2.5	1.27	5.8	0.4	97.5	2.6	1.32	1.7
Warwickshire, Solihull & Coventry	1.2	95.8	2.1	0.94	7.2	0.3	99.2	2.4	1.25	3.0
East of England	2.8	88.3	2.7	1.53	9.7	0.8	94.7	2.9	1.33	3.2
Beds & Herts	3.0	83.0	2.8	1.56	10.7	1.2	92.7	3.2	1.46	3.7
Cambridge & Huntingdon	4.1	92.0	3.1	1.74	7.5	1.3	100.0	2.8	1.48	3.5
Colchester & Chelmsford	1.1	83.3	2.2	1.03	7.4	0.3	97.3	2.8	1.44	2.2
East Suffolk	3.6	86.7	3.6	1.31	7.3	0.4	98.2	2.8	1.08	2.2
Epping	1.7	90.9	1.7	1.50	4.2	0.4	96.0	3.7	1.95	3.4
James Paget	1.5	100.0	1.5	1.17	13.4	0.7	93.8	1.0	0.86	3.2
Kings Lynn	2.3	91.7	0.8	1.81	8.7	1.3	70.6	1.6	0.75	4.4
Norfolk & Norwich	3.5	96.0	2.2	1.40	8.9	0.8	98.3	2.7	1.12	2.9
Peterborough	3.0	84.6	3.0	1.07	16.4	1.1	95.2	2.2	0.97	5.4
Peterborough (Southend)	2.2	91.2	4.4	2.10	9.9	0.3	95.2	3.1	1.30	2.9
West Suffolk	4.0	81.3	3.3	1.71	17.8	0.6	87.8	3.3	1.35	4.3
London	2.4	92.5	2.7	1.39	8.8	0.8	95.3	2.8	1.32	3.5
Barking, Havering, Redbridge & Brentwood	2.0	100.0	2.0	0.85	8.8	0.7	91.9	2.7	1.22	4.2
Central & East London	2.0	97.1	1.7	1.32	7.1	0.8	97.6	2.9	1.35	2.7
North London	2.6	90.0	3.3	1.73	10.7	0.9	94.9	2.9	1.27	4.6
South East London (Kings College Hospital)	0.7	94.4	3.0	1.46	6.7	0.3	97.5	3.3	1.47	2.5
South East London (Queen Mary's Sidcup)	4.7	100.0	0.5	0.93	9.4	0.9	93.9	2.9	1.53	3.5
South West London	2.7	92.0	3.2	1.58	8.6	1.2	96.6	2.9	1.41	3.3
West of London	2.7	86.7	3.3	1.37	9.7	0.7	92.9	2.1	1.09	3.4
South East Coast	2.1	92.9	2.2	1.42	8.3	0.7	94.3	2.9	1.28	3.3
Canterbury	4.2	86.4	1.2	0.97	7.4	1.0	90.0	2.2	1.03	2.4
East Sussex/Brighton	1.6	90.5	2.2	1.39	5.1	0.9	90.2	3.0	1.32	2.1
Guildford	2.6	93.1	3.8	1.73	10.3	0.6	94.9	3.4	1.42	4.0
Maldstone	1.2	100.0	3.6	1.64	8.2	0.5	100.0	3.4	1.47	3.1
Medway	1.4	96.7	3.5	1.78	9.9	0.6	97.7	3.0	1.50	5.5
Worthing	1.3	89.5	2.0	0.96	7.6	0.3	93.0	2.4	1.02	2.5
South Central	2.5	87.9	2.2	1.33	11.0	0.7	95.1	2.7	1.36	3.7
Aylesbury	4.2	87.5	4.2	2.16	10.8	0.3	94.7	2.3	1.41	3.5
East Berkshire	1.9	88.9	2.8	1.43	13.8	1.2	92.0	3.3	1.37	3.6
Isle of Wight	1.9	100.0	0.0	0.50	11.7	0.4	96.0	3.1	1.92	6.0
Milton Keynes	3.7	100.0	2.2	1.15	7.5	0.2	100.0	1.7	1.24	2.7
North & Mid Hampshire	4.9	94.1	4.0	1.82	14.0	1.6	91.9	3.4	1.42	6.3
Oxford	2.9	95.8	1.9	1.46	14.6	0.3	100.0	2.3	1.24	3.7
Portsmouth	1.0	81.0	2.3	1.30	9.3	0.5	96.2	2.4	1.20	2.6
Southampton & Salisbury	2.5	87.5	2.5	1.15	11.4	0.8	92.1	3.2	1.56	4.7
West Berkshire	2.2	88.2	0.7	1.10	5.8	0.6	95.4	2.4	1.39	1.8
Wycombe	1.2	66.7	1.8	1.06	10.5	0.4	95.7	2.5	1.23	3.5
South West	2.6	90.2	3.1	1.49	10.7	0.7	94.1	2.9	1.29	3.6
Avon	2.0	89.2	3.2	1.52	9.9	0.5	96.3	2.9	1.32	2.8
Cornwall	6.3	74.2	3.2	1.75	13.0	0.8	86.1	2.8	1.35	5.0
Dorset	1.1	96.6	3.3	1.45	12.5	0.5	95.6	3.2	1.31	4.6
Gloucestershire	3.3	84.2	2.6	1.33	8.8	1.1	94.0	2.7	1.48	3.4
North & Eastern Devon	2.1	81.0	2.1	1.38	7.0	1.0	90.6	3.4	1.17	3.1
Somerset	1.3	100.0	4.2	1.68	10.8	0.0	96.9	3.1	1.18	3.3
South Devon (Torbay)	3.1	100.0	6.2	1.70	11.6	0.8	93.5	3.0	1.48	2.7
West Devon & East Cornwall	3.4	100.0	3.0	1.86	15.6	1.1	94.5	2.9	1.20	6.0
Wiltshire	1.8	100.0	1.8	0.92	7.2	0.4	98.1	1.9	1.10	2.2

Source: KC62 Parts 1, 2 and 3, Tables A, B, and C1

⁽¹⁾ Benign Biopsy rate: number of benign biopsies per 1,000 women screened

⁽²⁾ Preoperative Diagnosis rate: percentage of cancers diagnosed cytologically or histologically without surgery (% of all cancers diagnosed)

⁽³⁾ Small cancer detection rate: number of invasive cancers smaller than 15mm detected (per 1,000 women screened)

⁽⁴⁾ SDR (all invasive cancers): ratio of the observed number of invasive cancers to the expected number based on applying criteria from the Swedish Two County randomised control trial,

which is used as a yard stick of performance. An SDR of 1 equates to approximate parity with the Swedish trial. An SDR of 1 with an uptake of 70% should achieve a mortality reduction of approximately 25%.

⁽⁵⁾ Assessment rate: percentage of women referred for assessment

Table 15a: NHS Breast Screening Programme: Selected diagnostic and outcome statistics for women aged 50-70, by breast screening unit 2007-08

Breast Screening Unit	Prevalent round (A+B)					Incident round (C1)				
	Benign Biopsy rate ⁽¹⁾ per 1,000	Preoperative Diagnosis rate % ⁽²⁾	Small cancers detected ⁽³⁾ (<15mm) per 1,000	Standardised detection ratio (SDR) ⁽⁴⁾	Assessment rate % ⁽⁵⁾	Benign Biopsy rate ⁽¹⁾ per 1,000	Preoperative Diagnosis rate % ⁽²⁾	Small cancers detected ⁽³⁾ (<15mm) per 1,000	Standardised detection ratio (SDR) ⁽⁴⁾	Assessment rate % ⁽⁵⁾
England	2.3	91.4	2.7	1.43	8.8	0.6	95.8	3.2	1.45	3.3
North East	2.4	88.6	2.3	1.24	6.9	0.5	95.5	3.1	1.40	2.7
Gateshead	1.7	75.8	2.3	1.00	8.0	0.5	98.3	3.6	1.53	3.0
Newcastle	3.3	90.5	2.2	1.46	5.7	0.5	97.1	2.7	1.37	2.2
North Tees	2.3	97.4	2.4	1.27	7.0	0.6	93.8	3.1	1.31	2.9
North West	2.3	90.8	2.3	1.34	8.7	0.6	96.9	3.3	1.54	3.4
Bolton, Bury & Rochdale	3.1	85.7	2.2	1.44	10.3	0.5	100.0	3.0	1.47	3.4
Chester	0.0	100.0	6.2	2.60	8.6	0.9	95.1	3.3	1.63	3.6
Crewe	2.2	90.9	3.7	1.69	12.5	1.0	100.0	3.4	1.50	3.6
East Lancashire	2.6	87.0	3.0	1.40	4.2	0.6	98.7	2.7	1.38	2.0
Greater Manchester	1.8	97.1	2.7	1.48	7.7	0.4	97.8	3.7	1.53	3.4
Liverpool	4.1	84.8	1.0	1.13	8.8	0.9	97.0	2.5	1.43	3.1
Macclesfield	1.5	88.5	4.2	1.81	8.4	0.7	97.0	3.9	1.69	3.5
North Cumbria	3.2	85.7	1.1	0.77	10.2	0.5	89.8	2.7	1.18	4.2
North Lancashire	1.4	95.7	1.9	1.12	7.8	1.0	98.3	4.4	1.86	3.7
Warrington	1.8	92.9	0.7	0.97	11.1	0.7	97.4	2.7	1.77	4.2
Wigan	3.6	82.4	1.5	1.06	9.1	0.5	91.9	3.2	1.43	3.0
Wirral	0.0	90.9	4.7	1.51	10.9	0.5	92.8	3.4	1.49	3.9
Yorkshire & Humber	1.3	94.4	2.9	1.55	7.0	0.5	97.3	3.3	1.48	3.0
Barnsley	1.7	100.0	3.4	1.27	9.7	0.9	100.0	3.0	1.45	3.0
Doncaster	1.2	100.0	1.2	0.83	4.1	0.1	98.7	2.6	1.32	1.6
Humberside	0.4	100.0	4.1	1.86	4.6	0.3	98.6	3.3	1.52	3.2
Leeds	2.2	90.7	2.2	1.42	8.1	0.8	94.3	3.4	1.72	3.3
North Yorkshire	1.3	89.7	2.9	1.78	6.8	0.4	98.8	3.0	1.40	3.1
Pennine	1.5	95.7	2.8	1.40	7.2	0.5	96.6	3.6	1.37	3.1
Rotherham	0.0	100.0	0.8	0.77	9.1	0.4	96.2	3.9	1.57	3.6
Sheffield	1.3	90.0	4.9	2.51	10.5	0.5	98.7	3.2	1.29	3.1
East Midlands	2.2	93.8	2.2	1.27	8.1	0.5	96.9	3.8	1.56	3.4
Derby City & South Derbyshire	0.0	95.2	2.4	1.62	6.3	0.1	99.2	4.2	1.78	2.8
Kettering	4.5	100.0	2.2	0.76	10.2	0.7	97.0	3.4	1.52	3.9
Leicestershire	4.7	91.4	1.8	1.42	7.2	0.8	93.2	3.9	1.59	3.7
Lincolnshire	0.8	89.7	1.9	1.23	10.1	0.5	97.3	3.6	1.60	4.4
North Derbyshire & Chesterfield	0.0	100.0	3.4	1.56	11.3	0.0	97.2	3.0	1.25	3.5
North Nottinghamshire	4.0	100.0	1.6	1.22	7.3	0.5	98.2	3.6	1.56	2.4
Northampton	0.6	84.6	2.3	1.14	7.2	0.1	96.2	4.2	1.77	3.1
Nottingham City	2.7	100.0	2.7	0.97	6.6	0.8	99.0	3.7	1.34	2.4
West Midlands	2.2	91.3	2.7	1.57	8.7	0.5	95.5	3.1	1.39	3.0
City, Sandwell & Walsall	2.4	94.1	2.2	1.52	11.2	0.5	92.4	2.3	1.28	4.1
Dudley & Wolverhampton	0.8	80.0	3.6	1.58	11.3	0.8	97.6	3.2	1.60	3.8
Hereford & Worcester	2.2	92.7	2.4	1.53	5.8	0.4	95.5	4.0	1.49	2.5
North Staffordshire	1.9	85.2	4.7	2.32	9.7	0.5	97.4	3.5	1.42	2.8
Shropshire	2.5	83.3	2.2	1.94	11.0	0.5	93.5	2.9	1.35	2.8
South Birmingham	6.0	100.0	4.8	2.34	8.8	0.1	91.8	3.7	1.32	3.0
South Staffordshire	2.4	100.0	2.4	1.33	5.8	0.4	96.1	2.8	1.36	1.7
Warwickshire, Solihull & Coventry	1.4	96.0	2.0	0.96	7.2	0.3	97.8	2.7	1.33	3.1
East of England	2.7	88.5	2.8	1.55	9.6	0.8	94.8	3.4	1.45	3.3
Beds & Herts	2.9	83.3	2.8	1.55	10.6	1.0	92.9	3.6	1.53	3.7
Cambridge & Huntingdon	4.1	92.0	3.0	1.69	7.4	1.2	100.0	2.8	1.44	3.5
Colchester & Chelmsford	1.1	83.3	2.2	1.01	7.3	0.4	96.3	3.2	1.48	2.2
East Suffolk	3.6	86.7	3.6	1.29	7.3	0.5	98.4	2.7	1.09	2.3
Epping	1.7	90.9	1.7	1.46	4.3	0.5	96.0	4.9	2.16	2.6
James Paget	1.5	100.0	1.5	1.30	13.4	0.8	97.2	2.1	1.17	3.4
Kings Lynn	2.3	91.7	0.8	1.76	8.7	1.4	86.7	2.9	1.25	4.5
Norfolk & Norwich	3.5	96.7	2.8	1.66	9.1	0.9	95.9	4.1	1.54	3.2
Peterborough	2.9	78.6	2.9	1.17	16.3	1.4	97.8	2.9	1.27	5.4
South Essex (Southend)	2.1	91.9	4.8	2.16	9.8	0.3	95.7	3.5	1.38	3.0
West Suffolk	3.9	83.3	3.2	1.63	17.9	0.5	88.1	3.8	1.47	4.4
London	2.3	93.0	2.7	1.37	8.7	0.7	95.2	3.0	1.39	3.5
Barking, Havering, Redbridge & Brentwood	2.0	100.0	2.3	0.93	8.8	0.7	93.2	2.9	1.31	4.2
Central & East London	1.9	97.4	1.9	1.32	7.0	0.6	98.4	3.5	1.58	2.7
North London	2.5	90.3	3.2	1.66	10.6	0.9	94.2	3.0	1.26	4.5
South East London (Kings College Hospital)	0.7	94.4	2.9	1.36	6.6	0.2	97.5	3.5	1.56	2.5
South East London (Queen Mary's Sidcup)	4.6	100.0	0.5	1.11	9.4	0.9	94.8	2.7	1.36	3.4
South West London	2.8	92.5	3.3	1.59	8.6	1.0	94.9	3.2	1.54	3.4
West of London	2.6	87.8	3.3	1.28	9.7	0.6	92.8	2.3	1.11	3.2
South East Coast	2.1	92.8	2.9	1.44	8.4	0.7	94.4	3.2	1.43	3.4
Canterbury	4.1	87.0	1.5	0.98	7.5	1.2	91.8	2.2	1.19	2.6
East Sussex/Brighton	1.6	91.3	2.2	1.49	5.2	1.1	91.7	3.5	1.56	2.2
Guildford	2.5	93.1	3.7	1.66	10.4	0.7	94.1	3.5	1.46	4.0
Maidstone	1.2	100.0	4.0	1.67	8.4	0.5	99.0	3.9	1.61	3.1
Medway	1.7	96.9	3.4	1.84	10.1	0.7	96.5	3.2	1.67	5.7
Worthing	1.2	86.4	2.5	1.03	7.7	0.3	94.4	2.7	1.24	2.6
South Central	2.5	88.8	2.5	1.40	11.0	0.6	95.4	3.0	1.46	3.7
Aylesbury	4.1	87.5	4.1	2.12	10.7	0.3	95.8	2.3	1.32	3.6
East Berkshire	1.9	89.5	3.2	1.49	13.9	0.9	92.6	3.3	1.40	3.6
Isle of Wight	1.9	100.0	0.0	0.48	11.7	0.3	96.9	3.5	1.77	6.1
Milton Keynes	3.7	100.0	2.9	1.49	7.6	0.2	100.0	2.4	1.49	2.9
North & Mid Hampshire	4.8	94.4	4.4	1.84	13.9	1.4	93.4	4.3	1.68	6.2
Oxford	2.8	96.4	2.5	1.71	14.6	0.3	98.1	2.5	1.38	3.7
Portsmouth	1.0	81.8	2.2	1.26	9.4	0.4	96.6	2.9	1.45	2.7
Southampton & Salisbury	2.4	88.9	2.8	1.27	11.4	0.8	92.6	3.4	1.51	4.6
West Berkshire	2.1	88.9	0.7	1.13	5.8	0.5	94.7	2.7	1.49	1.8
Wycliffe	1.2	66.7	1.7	1.02	10.6	0.4	96.9	2.3	1.24	3.4
South West	2.6	90.5	3.2	1.48	10.6	0.6	94.5	3.2	1.36	3.6
Avon	2.0	89.2	3.2	1.47	9.9	0.6	96.6	2.9	1.26	2.7
Cornwall	6.3	75.0	3.1	1.79	13.0	0.9	87.8	3.0	1.37	4.8
Dorset	1.1	96.9	3.8	1.56	12.6	0.4	96.1	3.3	1.35	4.5
Gloucestershire	3.3	85.0	2.9	1.40	8.7	1.0	92.9	3.3	1.70	3.4
North & Eastern Devon	2.1	81.0	2.1	1.32	7.0	1.0	92.5	3.6	1.22	3.1
Somerset	1.2	100.0	4.1	1.62	10.8	0.0	96.0	4.0	1.41	3.3
South Devon (Torbay)	3.0	100.0	6.1	1.60	11.5	0.8	93.3	2.7	1.47	2.6
West Devon & East Cornwall	3.4	100.0	2.9	1.80	15.5	1.1	95.1	3.2	1.28	5.8
Wiltshire	1.8	100.0	1.8	0.87	7.1	0.3	98.7	2.7	1.22	2.2

Source: KC62 Parts 1, 2 and 3, Tables A, B, and C1

⁽¹⁾ Benign Biopsy rate: number of benign biopsies per 1,000 women screened

⁽²⁾ Preoperative Diagnosis rate: percentage of cancers diagnosed cytologically or histologically without surgery (% of all cancers diagnosed)

⁽³⁾ Small cancer detection rate: number of invasive cancers smaller than 15mm detected (per 1,000 women screened)

⁽⁴⁾ SDR (all invasive cancers): ratio of the observed number of invasive cancers to the expected number based on applying criteria from the Swedish Two County randomised control trial,

which is used as a yard stick of performance. An SDR of 1 equates to approximate parity with the Swedish trial. An SDR of 1 with an uptake of 70% should achieve a mortality reduction of approximately 25%.

⁽⁵⁾ Assessment rate: percentage of women referred for assessment

*This return is effective from 1 April 2002
It has been approved by the Review of Central Returns Steering Committee (ROCR) and Minister*

Year ending 31 March 2008

Breast Screening Unit code _____
 Breast Screening Unit name _____
 Name of contact _____
 Contact telephone _____
 Email Address _____

If you have any queries regarding completion of this form, please contact The IC on : Telephone : 0113 2547032

Fax :

Email: enquiries@ic.nhs.uk

Returns should be completed and returned to : Health and Social Care Information Centre
 1 Trevelyan Square
 Boar Lane
 Leeds
 LS1 6AE

Please complete the following:

Reading type

Single	Recall if one suggests	Consensus	Arbitration	Mixed
a	b	c	d	e

Number of views

	One view	Two view
Prevalent screen		
Incident screen		

Round length indicator

(percentage of eligible women whose first offered appointment is within 36 months of their previous screen)

Waiting time (percentage within 3 weeks)

(based on date of last screening to date of 1st offered assessment appointment)

For NHS use. Please use this space to record anything relevant to the quality or consistency of the data.

I confirm that these data are, to the best of my knowledge, an accurate representation of the results obtained from the breast screening carried out at this unit.

Breast Screening Director

Name _____

Date _____

Signed _____

KC62 Annex

The purpose of this Annex is to provide further information on each cancer detected which will allow epidemiological comparisons to be made both within the programme and with data from elsewhere.

The file will contain no identifying information of the woman .

The download to accompany the KC62 should be either as a ASCII or EXCEL file.

The information requested is as follows:

Line for each cancer detected	Relevant table (i.e. A, B, C1 etc.)	Age at first offered appointment in this episode (years)	Type of cancer (invasive, non-invasive or micro-invasive)	Size of tumour (mm)	Grade of tumour (I, II or III for invasive and high or low/intermediate for DCIS)	Nodal status of tumour			Histological type *
						Number of lymph nodes sampled (number, 0 or "Not known")	Number sampled positive	Number sampled negative	
(01)	(01)	(02)	(03)	(04)	(05)	(06)	(07)	(08)	(09)
(01)									
(02)									
(03)									
(04)									
(05)									
(06)									
(07)									
(08)									
(09)									
(10)									
(11)									
(12)									
(13)									
(14)									
(15)									
(16)									
(17)									
(18)									
(19)									
(20)									

Use more lines if number of cancers detected exceeds 20

* see guidelines for histological sub types and codes

APPENDIX B

This return is effective from 1 April 2002.

It has been approved by the Review of Central Returns Steering Committee (ROCR) and Minister

ADULT SCREENING PROGRAMMES - BREAST SCREENING

KC63

Year ending 31 March 2008

PCT code _____

PCT name _____

Name of PCT Breast Screening contact _____

PCT Contact Telephone No. _____

PCT Contact Fax No _____

PCT Contact e-mail _____

If you have any queries regarding completion of this form, please contact The Information Centre on

Telephone : 0113 2547032

Fax :

Returns should be completed and returned to : Health and Social Care Information Centre

1 Trevelyan Square

Boar Lane

Leeds

LS1 6AE

For NHS use. Please use this space to record anything relevant to the quality or consistency of the data.

BREAST SCREENING PROGRAMME

KC63

Part 1: CROSS SECTION ANALYSIS OF POPULATION COVERAGE WITHIN PERIOD 1/4/2007 - 31/3/2008

(1)	(2)	(3)	(4)	(5)	(6)	(7)	(8)	(9)	(10)	(11)	(12)	(13)	(14)	(15)
Line Number	Age of woman at 31 March 2008	Number of women resident as at 31 March 2008	Number of ineligible women	Never screened		Call / Recall Episodes				Self/GP Referral Episodes		Women screened		Coverage % Women screened in last 3 years
				Number of women selected	Number never selected	Number invited in period	Number screened in period	Number invited in last 3 years	Number screened in last 3 years	Number screened in period	Number screened in last 3 years	Number screened in period	Number screened in last 3 years	
001	< 45													
002	45 - 49													
003	50 - 52													
004	53 - 54													
005	55 - 59													
006	60 - 64													
007	65 - 69													
008	70													
009	71-74													
010	75+													
011	Target Group (50-70)													
999	Total all ages													

Part 2: WOMEN WITH OPEN EPISODES

001	Number with Open episodes - no invite	
-----	---------------------------------------	--

002	Number with Open episodes - invited	
-----	-------------------------------------	--

**Published by The NHS Information Centre
Part of the Government Statistical Service**

ISBN 978-1-84636-270-5

This publication may be requested in large print or other formats.

For further information:

www.ic.nhs.uk

0845 300 6016

enquiries@ic.nhs.uk

Copyright © 2009, Health and Social Care Information Centre. All rights reserved

This work remains the sole and exclusive use of The Information Centre, and may only be reproduced, and publicly displayed, where there is explicit reference to the ownership of The Information Centre.

This work may be re-used by NHS and government organisations without permission.

This work is subject to the Re-Use of Public Sector Information Regulations and permission for commercial use must be obtained from the copyright holder.