



The
Information
Centre

for health and social care

NHS Dental Statistics for England: 2009/10

The NHS Information Centre
is England's central, authoritative source
of health and social care information.

Acting as a 'hub' for high quality, national,
comparative data, we deliver information for local
decision makers, to improve the quality and
efficiency of care.

www.ic.nhs.uk

Author: The NHS Information Centre, Dental and Eye Care Team

Version: 1.0

Date of Publication: 18 August 2010

Contents

Executive Summary	4
Introduction	6
Activity	8
Courses of Treatment	8
Units of Dental Activity	15
Orthodontic Activity	21
Patients Seen	22
Patient Charges	26
Workforce	27
Number of Dentists	27
Dentists by Contract Type	28
Dentists by Dentist Type	29
Dentists by Gender	30
Dentists by Age Group	31
Dentists by Age and Gender	32
Dentists by SHA	34
List of Annexes	38
Other Publications	40

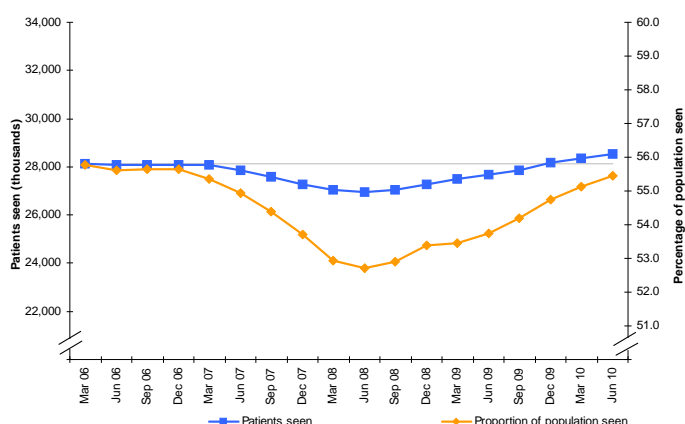
Executive Summary

This annual report brings together information on NHS dental activity in England up to 2009/10. In addition, the report shows more up-to-date information on the number of patients seen by an NHS dentist, up to the first quarter of 2010/11.

The number of patients seen by an NHS dentist

- In the last three quarters, the number of patients seen has exceeded the March 2006 baseline, when the current dental contract was introduced.

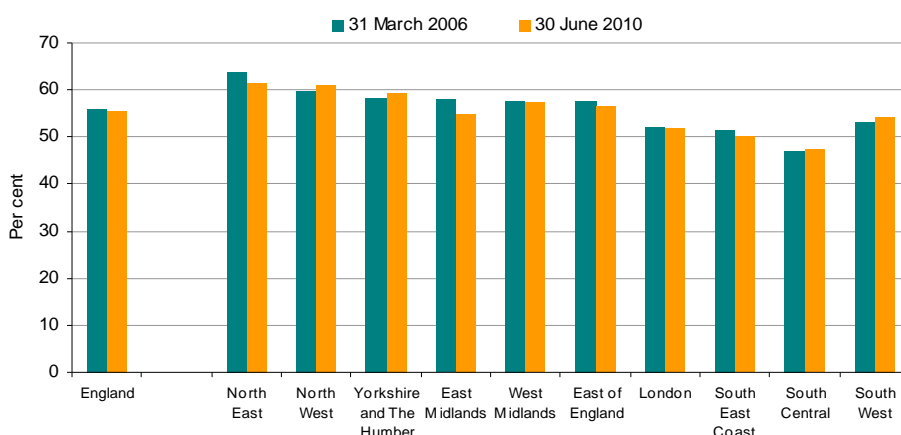
Total patients seen and percentage of population seen in the previous 24 months



A total of 28.5 million patients were seen in the 24 month period ending June 2010, an increase of 376,000 on the March 2006 baseline.

However, the percentage of the population seen by an NHS dentist, at 55.4 per cent, remains below the March 2006 level of 55.8 per cent. Note that this measure has grown in each quarter since its lowest point in June 2008.

Percentage of patients seen in the previous 24 months by SHA, March 2006 and June 2010



The percentage of the population seen by an NHS dentist exceeds the March 2006 baseline in four Strategic Health Authorities (SHAs).

Five PCTs with the highest proportion of patients seen by an NHS dentist (June 2010)

PCT	Proportion of patients seen (%)
Great Yarmouth & Waveney PCT	76.9
Doncaster PCT	73.2
Middlesbrough PCT	72.4
Hull PCT	71.8
Western Cheshire PCT	71.3

At the local level, the percentage of patients seen ranges from 23.8 per cent in Kensington and Chelsea PCT to 76.9 per cent at Great Yarmouth & Waveney PCT. Note that this report does not include private dental activity, which may help to explain the range in PCT level figures.

...and the lowest proportion

Kensington and Chelsea PCT	23.8
Richmond and Twickenham PCT	33.9
Buckinghamshire PCT	41.2
West Kent PCT	41.8
City and Hackney PCT	41.9

Dental activity

- There were 38.6 million Courses of Treatment (CoTs) in 2009/10, an increase of 1.2 million (3.1 per cent) on 2008/09. CoTs rose for each treatment band in each quarter of 2009/10 compared to the corresponding quarters in 2008/09.
- There was a 5.0 per cent increase in Units of Dental Activity (UDAs).

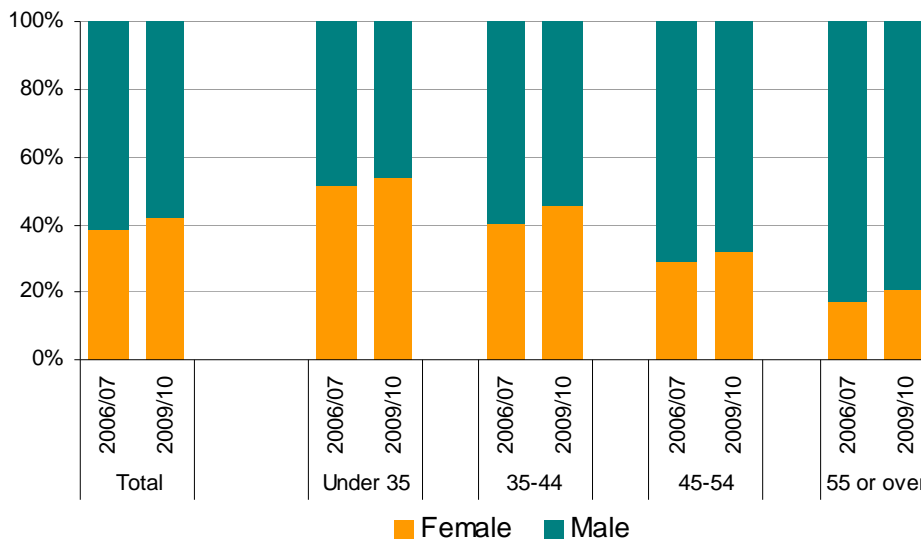
This greater percentage increase in UDAs over CoTs is due to a higher rise in more complex, band 3 activity, which generates a higher number of UDAs than simpler, band 1 activity. There was a 12.2 per cent increase in band 3 CoTs (and therefore UDAs) from 2008/09 to 2009/10, compared with a 2.7 per cent increase in band 1 treatments.

- Growth in CoTs was seen in all SHAs from 2008/09 to 2009/10. The largest percentage increase was seen in South Central SHA which saw a 6.1 per cent increase in CoTs in the period.

Dental workforce

- 22,000 dentists performed NHS activity during 2009/10, an increase of 660 (3.1 per cent) on 2008/09.
- There was a 5.6 per cent increase in the number of female dentists in the last year and a continued increase in the percentage of female dentists. In 2009/10 this percentage had risen to 42.2 per cent, up from 38.8 per cent in 2006/07. 54.1 per cent of dentists aged under-35 are female.

Since 2006/07, the percentage of female dentists has risen across all age groups



Introduction

This annual report brings together information on NHS dental activity in England, based on data collected through FP17 forms by NHS Dental Services, part of the NHS Business Services Authority. This information is used by the Department of Health to inform government policy on NHS dentistry and by local NHS managers in the planning and delivery of local dental services.

The report includes information on:

- Dental **activity** – including data on the number of Courses of Treatment and Units of Dental Activity
- The number of **patients seen** by an NHS dentist
- **Orthodontic** activity
- Patient **charges**
- Dental **workforce**

Most activity is carried out by 'high street dentists'. Note that this report includes work undertaken by dentists under vocational training but does not cover dental treatment carried out in hospital under Hospital Dental Services, nor services provided privately.

For an introduction to the terms and measures used in this report, we recommend reading our *Beginner's Guide to Dental Data*, available on our web-site at the following link: www.ic.nhs.uk/pubs/dental

In addition, full technical information is available in PDF format in **Annex 5** of this report.

In the main, the report covers the first four years of current dental contract arrangements, 2006/07 to 2009/10. However, figures for the number of patients seen by NHS dentists are slightly more up-to-date, including figures for the first quarter of 2010/11:

- Dental activity, orthodontic, workforce and patient charge figures are shown to 2009/10 (up to and including 31 March 2010).
- Patients seen figures are reported to the end of the first quarter 2010/11, up to and including 30 June 2010.

Activity data for the first three quarters of 2009/10 have been updated to account for treatments reported too late for inclusion in our earlier quarterly reports. All activity and patients seen figures in the report can be regarded as final figures, not subject to further revision or update.

Population based measures are based on population estimates provided by the Office of National Statistics (ONS). ONS is currently in the process of producing revised estimates for 2001 onwards. However, estimates for all the years covered in this report are not yet available at the lowest level. As activity and patients seen data are base-lined against data from 2006, to ensure consistency between years and national and sub-national figures we have used the original estimates in this report for activity and patients seen measures. We expect to introduce revised population estimates in future reports. Users should note that this is likely to have an impact on population based measures such as the percentage of patients seen, particularly at the sub-national level. Workforce data are not base-lined in the same way, so the latest available population estimates have been applied to 2009/10 workforce measures. Historic workforce data will also be updated once revised estimates are available.

The report **annexes** include figures at the Primary Care Trust (PCT) and Strategic Health Authority (SHA) level. Note that we have made some revisions to the report annexes since the 2008/09 annual dental report:

- Annex 1 includes all report tables in Excel format. This annex also contains patients seen tables by adult/child at SHA level.
- Annex 2 contains interactive Excel factsheets which allow the user to compare activity across PCTs and SHAs.
- Annex 3 shows detailed PCT and SHA level figures in Excel format across a series of measures.
- Annex 4 provides information on how provisional and final figures compare for each quarter at the sub-national level. This information is useful when using quarterly provisional figures to estimate full year out-turn.
- Annex 5 includes full technical information on the measures and definitions used in the report.
- Annex 6 contains 'flat Excel files' of unformatted activity and patients seen data, suitable for further analysis. Workforce data is not provided in this format at this time.

Users should also be aware of the **Data Quality Statement**, which accompanies this report, available at www.ic.nhs.uk/pubs/dentalstats0910.

Any comments?

We welcome any feedback on this report as well as any suggestions for future reports. Comments can be submitted via the '*Have Your Say*' link on the following webpage: www.ic.nhs.uk/pubs/dentalstats0910

Activity

Courses of Treatment

Dental activity is measured through the number of Courses of Treatment (CoTs) delivered. For a full definition of CoTs and treatment bands, please refer to **annex 5**.

- Tables 1a and 1b show that there were 38.6 million CoTs in 2009/10, an increase of 1.2 million (3.1 per cent) on 2008/09. In this period, there was a rise across all treatment bands with the largest percentage rise seen in more complex activity (band 3) at 12.2 per cent.
- Further, the steady increase in the percentage of CoTs at band 3 continues. In 2006/07, band 3 CoTs accounted for 4.4 per cent of all CoTs. This has risen to 5.4 per cent in 2009/10. There has been a similar rise in the percentage of CoTs that are urgent with an equivalent decrease in the percentage of CoTs at band 1 (see table 1a).
- The distribution of band 3 activity across patient types continues to shift. As shown in table 1c, over the last four years there was greater growth in band 3 CoTs for non-paying adults than for paying adults. In 2006/07, the number of CoTs for paying and non-paying adults were fairly similar at 730,000 and 758,000 respectively. In 2009/10, the equivalent figures were 920,000 and 1.1 million CoTs respectively.
- As shown in table 1e, growth in CoTs was seen in all SHAs from 2008/09 to 2009/10. The largest percentage increase was seen in the South Central SHA which saw a 6.1 per cent increase in CoTs in the period. Despite this increase, the number of CoTs per 100,000 population in South Central SHA, at 64,200, remains lower than the England average of 75,000. Only London SHA has a lower figure, with 58,600 CoTs per 100,000 population in 2009/10 (see figure 1d).
- For London SHA, the profile of CoTs across treatment bands differs markedly from the other SHAs. In 2009/10, in England, 52.7 per cent of CoTs are at band 1. In London, this figure is 42.5 per cent, as shown in table 1f. Further, the percentage of CoTs delivered to non-paying adults is significantly higher in London compared to other SHAs. In London SHA, 31.6 per cent of CoTs were delivered to non-paying adults. At the national level, the equivalent figure is 22.8 per cent (see table 1g).

Table 1a: Number and percentage of CoTs by treatment band and quarter, 2006/07 to 2009/10

	Thousands & Per cent											
	Number (000s)						Per cent of total					
	Band 1	Band 2	Band 3	Urgent	Other	Total	Band 1	Band 2	Band 3	Urgent	Other	Total
2006/07 Total	19,013	10,688	1,529	2,881	940	35,051	54.2	30.5	4.4	8.2	2.7	100.0
2007/08 Q1	4,964	2,704	399	762	222	9,051	54.9	29.9	4.4	8.4	2.4	100.0
Q2	4,794	2,695	401	779	223	8,892	53.9	30.3	4.5	8.8	2.5	100.0
Q3	4,698	2,740	442	800	228	8,909	52.7	30.8	5.0	9.0	2.6	100.0
Q4	4,819	2,853	442	793	229	9,135	52.7	31.2	4.8	8.7	2.5	100.0
Total	19,275	10,992	1,685	3,133	902	35,987	53.6	30.5	4.7	8.7	2.5	100.0
2008/09 Q1	5,016	2,833	429	816	229	9,323	53.8	30.4	4.6	8.8	2.5	100.0
Q2	4,973	2,801	438	833	232	9,277	53.6	30.2	4.7	9.0	2.5	100.0
Q3	4,825	2,853	486	855	235	9,254	52.1	30.8	5.3	9.2	2.5	100.0
Q4	4,989	3,002	507	839	235	9,572	52.1	31.4	5.3	8.8	2.5	100.0
Total	19,803	11,490	1,860	3,343	930	37,426	52.9	30.7	5.0	8.9	2.5	100.0
2009/10 Q1	5,139	2,869	480	861	237	9,586	53.6	29.9	5.0	9.0	2.5	100.0
Q2	5,141	2,875	497	873	237	9,623	53.4	29.9	5.2	9.1	2.5	100.0
Q3	4,963	2,907	547	901	239	9,556	51.9	30.4	5.7	9.4	2.5	100.0
Q4	5,103	3,049	562	874	236	9,825	51.9	31.0	5.7	8.9	2.4	100.0
Total	20,346	11,700	2,086	3,509	949	38,590	52.7	30.3	5.4	9.1	2.5	100.0

Notes:

1. Please see Annex 5 for information on which treatments are in each treatment band.
2. Figures presented are rounded. Calculations have been carried out using unrounded figures, which are available in Annex 3.

Table 1b: Change in number and percentage of CoTs by band in 2009/10

	Thousands, per cent & percentage point											
	Number (000s) & Per cent						Percentage point					
	Band 1	Band 2	Band 3	Urgent	Other	Total	Band 1	Band 2	Band 3	Urgent	Other	Total
Change 2008/09 Q1 to 2009/10 Q1	123	36	51	45	8	263	-0.2	-0.5	0.4	0.2	0.0	:
Change 2008/09 Q2 to 2009/10 Q2	168	74	59	40	5	346	-0.2	-0.3	0.4	0.1	0.0	:
Change 2008/09 Q3 to 2009/10 Q3	138	53	61	46	4	302	-0.2	-0.4	0.5	0.2	0.0	:
Change 2008/09 Q4 to 2009/10 Q4	114	47	56	36	1	253	-0.2	-0.3	0.4	0.1	-0.1	:
Change 2008/09 to 2009/10	543	210	227	166	18	1,163	-0.2	-0.4	0.4	0.2	0.0	:
% change 2008/09 Q1 to 2009/10 Q1	2.4	1.3	12.0	5.5	3.7	2.8	:	:	:	:	:	:
% change 2008/09 Q2 to 2009/10 Q2	3.4	2.7	13.5	4.8	2.0	3.7	:	:	:	:	:	:
% change 2008/09 Q3 to 2009/10 Q3	2.9	1.9	12.5	5.3	1.8	3.3	:	:	:	:	:	:
% change 2008/09 Q4 to 2009/10 Q4	2.3	1.6	11.0	4.2	0.4	2.6	:	:	:	:	:	:
% change 2008/09 to 2009/10	2.7	1.8	12.2	5.0	2.0	3.1	:	:	:	:	:	:

Notes:

1. Please see Annex 5 for information on which treatments are in each treatment band.
2. Figures presented are rounded. Calculations have been carried out using unrounded figures, which are available in Annex 3.

Figure 1a: Percentage of CoTs in each treatment band, 2009/10

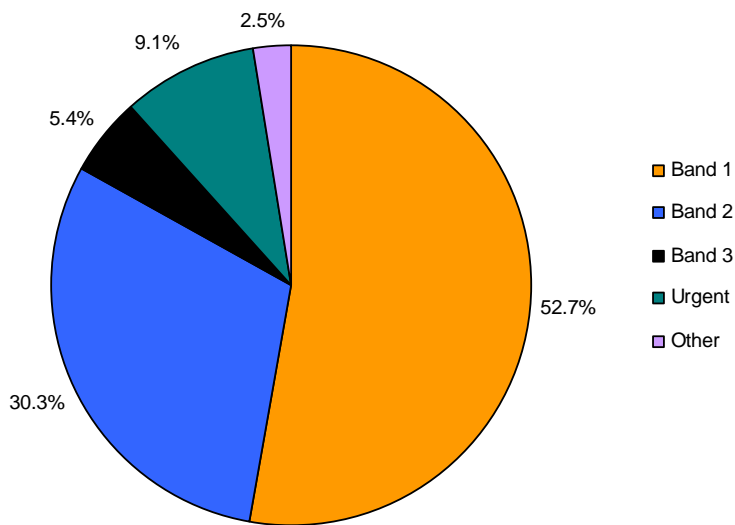


Table 1c: Number and percentage of CoTs by patient type and treatment band, 2006/07 to 2009/10

		Number (000s)						Per cent of total					
		Band 1	Band 2	Band 3	Urgent	Other	Total	Band 1	Band 2	Band 3	Urgent	Other	Total
2006/07	Paying adults	9,755	5,075	730	1,596	-	-	51.3	47.5	47.7	55.4	-	-
	Non-paying adults	2,696	2,730	758	912	-	-	14.2	25.5	49.6	31.7	-	-
	Children	6,562	2,883	41	373	-	-	34.5	27.0	2.7	13.0	-	-
	Total	19,013	10,688	1,529	2,881	940	35,051	100.0	100.0	100.0	100.0	100.0	100.0
2007/08	Paying adults	9,827	5,254	789	1,674	672	18,215	51.0	47.8	46.8	53.4	74.5	50.6
	Non-paying adults	2,753	2,776	849	1,031	166	7,574	14.3	25.3	50.4	32.9	18.5	21.0
	Children	6,696	2,962	47	429	64	10,198	34.7	26.9	2.8	13.7	7.1	28.3
	Total	19,275	10,992	1,685	3,133	902	35,987	100.0	100.0	100.0	100.0	100.0	100.0
2008/09	Paying adults	10,175	5,560	853	1,745	691	19,024	51.4	48.4	45.9	52.2	74.3	50.8
	Non-paying adults	2,861	2,941	954	1,139	169	8,064	14.4	25.6	51.3	34.1	18.2	21.5
	Children	6,767	2,989	53	459	70	10,338	34.2	26.0	2.8	13.7	7.6	27.6
	Total	19,803	11,490	1,860	3,343	930	37,426	100.0	100.0	100.0	100.0	100.0	100.0
2009/10	Paying adults	10,285	5,619	920	1,777	695	19,297	50.6	48.0	44.1	50.6	73.3	50.0
	Non-paying adults	3,090	3,172	1,107	1,255	181	8,804	15.2	27.1	53.0	35.8	19.0	22.8
	Children	6,970	2,909	59	477	73	10,488	34.3	24.9	2.8	13.6	7.7	27.2
	Total	20,346	11,700	2,086	3,509	949	38,590	100.0	100.0	100.0	100.0	100.0	100.0

Notes:

1. Please see Annex 5 for information on which treatments are in each treatment band.
2. Figures presented are rounded. Calculations have been carried out using unrounded figures, which are available in Annex 3.
3. Information on 'Other' treatments by patient type in 2006/07 is not available

Figure 1b: Percentage of CoTs by patient type for each treatment band, 2009/10

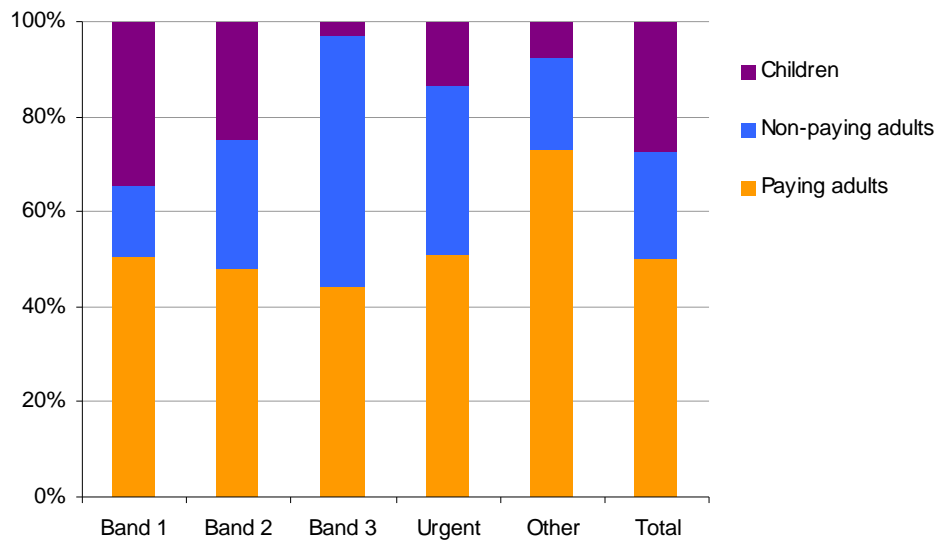


Table 1d: Percentage of CoTs by treatment band for each patient type, 2006/07 to 2009/10

	Per cent					
	Per cent of total					
	Band 1	Band 2	Band 3	Urgent	Other	Total
2006/07 Total	54.2	30.5	4.4	8.2	2.7	100.0
2007/08 Paying adults	54.0	28.8	4.3	9.2	3.7	100.0
2007/08 Non-paying adults	36.3	36.6	11.2	13.6	2.2	100.0
2007/08 Children	65.7	29.0	0.5	4.2	0.6	100.0
2007/08 Total	53.6	30.5	4.7	8.7	2.5	100.0
2008/09 Paying adults	53.5	29.2	4.5	9.2	3.6	100.0
2008/09 Non-paying adults	35.5	36.5	11.8	14.1	2.1	100.0
2008/09 Children	65.5	28.9	0.5	4.4	0.7	100.0
2008/09 Total	52.9	30.7	5.0	8.9	2.5	100.0
2009/10 Paying adults	53.3	29.1	4.8	9.2	3.6	100.0
2009/10 Non-paying adults	35.1	36.0	12.6	14.3	2.1	100.0
2009/10 Children	66.5	27.7	0.6	4.5	0.7	100.0
2009/10 Total	52.7	30.3	5.4	9.1	2.5	100.0

Notes:

1. Please see Annex 5 for information on which treatments are in each treatment band.
2. Figures presented are rounded. Calculations have been carried out using unrounded figures, which are available in Annex 3.

Figure 1c: Percentage of CoTs by treatment band for each patient type, 2009/10

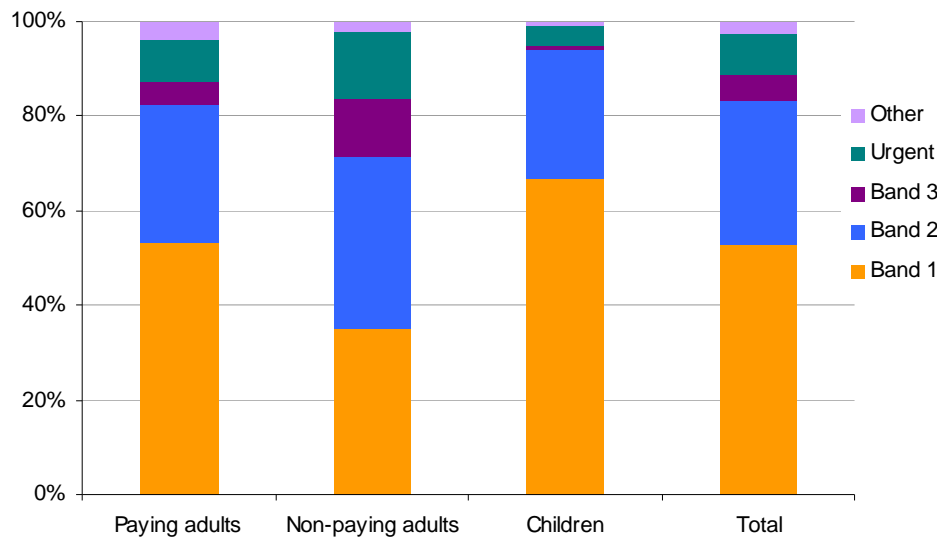


Table 1e: Number of CoTs and number of CoTs per 100,000 population by SHA, 2006/07 to 2009/10

	Number (000s)				% change 08/09 to 09/10	Number per 100,000 population				change 08/09 to 09/10
	2006/07	2007/08	2008/09	2009/10		2006/07	2007/08	2008/09	2009/10	
England	35,051	35,987	37,426	38,590	3.1	69,048	70,435	72,748	75,009	2,261
North East	2,072	2,132	2,186	2,205	0.9	81,084	83,117	84,882	85,615	733
North West	5,317	5,457	5,656	5,795	2.5	77,589	79,492	82,264	84,284	2,020
Yorkshire and The Humber	3,936	4,106	4,268	4,383	2.7	76,547	79,301	81,864	84,077	2,214
East Midlands	3,142	3,263	3,389	3,485	2.9	71,992	74,169	76,441	78,622	2,181
West Midlands	3,922	3,997	4,138	4,189	1.2	73,082	74,263	76,476	77,422	946
East of England	4,044	4,116	4,279	4,430	3.5	72,133	72,700	74,696	77,326	2,631
London	4,069	4,102	4,301	4,470	3.9	54,164	54,275	56,445	58,668	2,223
South East Coast	2,656	2,720	2,842	2,941	3.5	62,528	63,515	65,822	68,109	2,287
South Central	2,262	2,371	2,460	2,610	6.1	56,687	58,890	60,552	64,248	3,696
South West	3,630	3,725	3,907	4,081	4.4	70,839	71,944	75,010	78,337	3,326

Notes:

1. Figures presented are rounded. Calculations have been carried out using unrounded figures, which are available in Annex 3.
2. Please see Annex 5 for information on the population figures used in calculations.

Figure 1d: CoTs per 100,000 population, by SHA, 2009/10

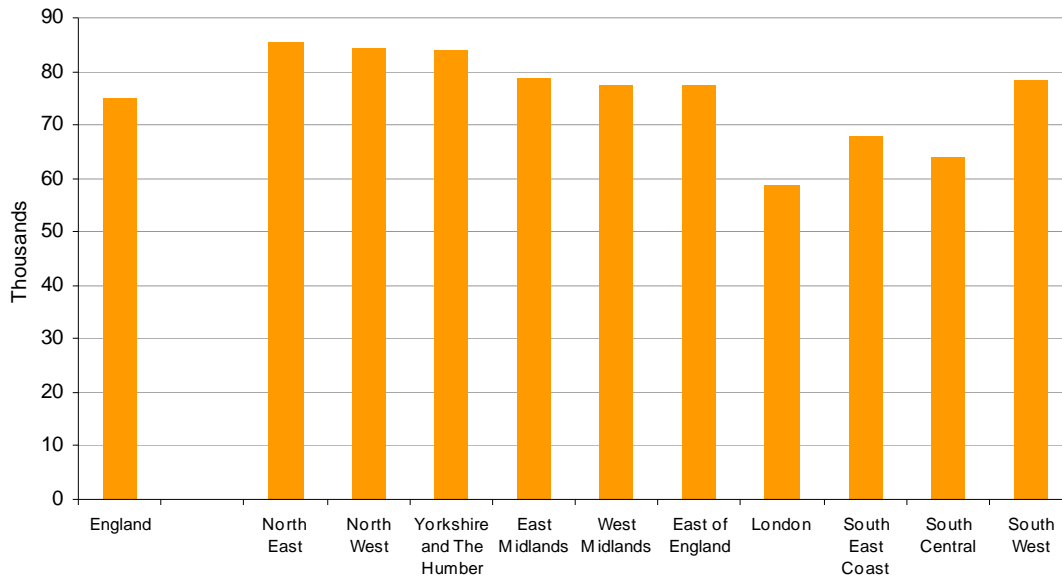


Figure 1e: Percentage change in number of CoTs, by SHA, 2008/09 to 2009/10

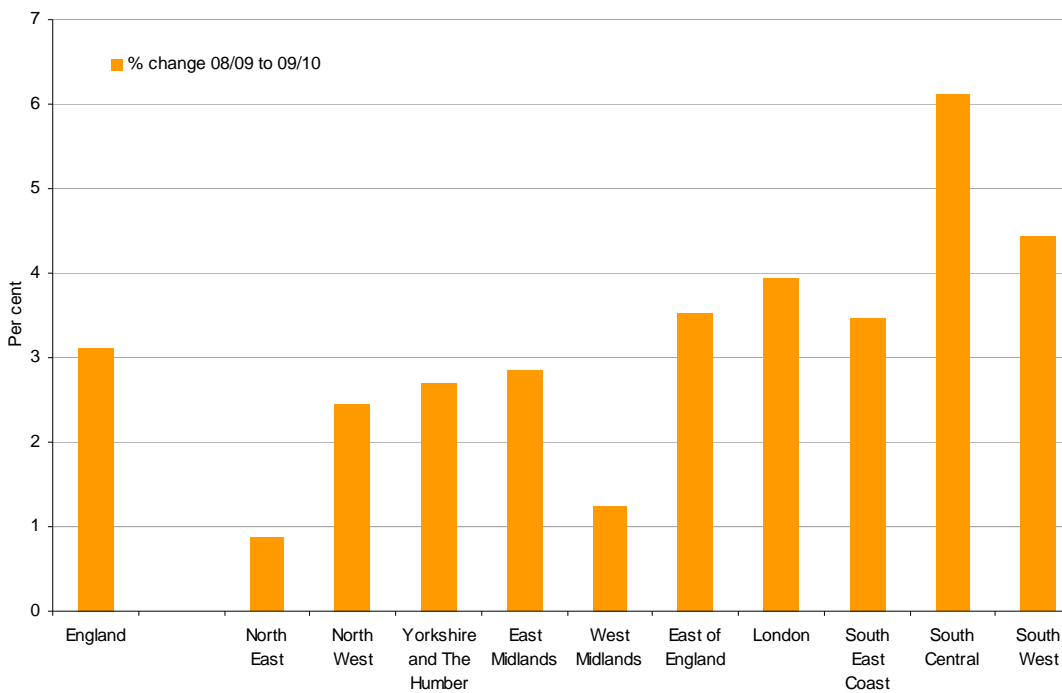


Table 1f: Number and percentage of CoTs by SHA and band, 2009/10

	Thousands & Per cent											
	Number (000's)						Per cent of total					
	Band 1	Band 2	Band 3	Urgent	Other	Total	Band 1	Band 2	Band 3	Urgent	Other	Total
England	20,346	11,700	2,086	3,509	949	38,590	52.7	30.3	5.4	9.1	2.5	100.0
North East	1,112	691	132	195	74	2,205	50.4	31.4	6.0	8.9	3.4	100.0
North West	2,985	1,732	306	615	157	5,795	51.5	29.9	5.3	10.6	2.7	100.0
Yorkshire and The Humber	2,406	1,299	198	353	127	4,383	54.9	29.6	4.5	8.1	2.9	100.0
East Midlands	1,979	1,017	155	254	81	3,485	56.8	29.2	4.4	7.3	2.3	100.0
West Midlands	2,269	1,246	244	325	106	4,189	54.2	29.7	5.8	7.7	2.5	100.0
East of England	2,392	1,322	218	391	107	4,430	54.0	29.9	4.9	8.8	2.4	100.0
London	1,900	1,562	413	484	112	4,470	42.5	34.9	9.2	10.8	2.5	100.0
South East Coast	1,586	866	152	281	57	2,941	53.9	29.4	5.2	9.5	1.9	100.0
South Central	1,490	730	104	239	47	2,610	57.1	28.0	4.0	9.2	1.8	100.0
South West	2,227	1,235	165	372	82	4,081	54.6	30.3	4.0	9.1	2.0	100.0

Notes:

1. Please see Annex 5 for information on which treatments are in each treatment band.
2. Figures presented are rounded. Calculations have been carried out using unrounded figures, which are available in Annex 3.

Table 1g: Number and percentage of CoTs by SHA and patient type, 2009/10

	Thousands & Per cent							
	Number (000's)				Per cent of Total			
	Paying adults	Non-paying adults	Children	Total	Paying adults	Non-paying adults	Children	Total
England	19,297	8,804	10,488	38,590	50.0	22.8	27.2	100.0
North East	1,079	589	537	2,205	49.0	26.7	24.4	100.0
North West	2,847	1,400	1,548	5,795	49.1	24.2	26.7	100.0
Yorkshire and The Humber	2,270	963	1,151	4,383	51.8	22.0	26.3	100.0
East Midlands	1,813	740	932	3,485	52.0	21.2	26.7	100.0
West Midlands	2,017	1,048	1,125	4,189	48.1	25.0	26.8	100.0
East of England	2,417	828	1,184	4,430	54.6	18.7	26.7	100.0
London	1,826	1,413	1,231	4,470	40.9	31.6	27.5	100.0
South East Coast	1,506	564	871	2,941	51.2	19.2	29.6	100.0
South Central	1,344	450	816	2,610	51.5	17.2	31.3	100.0
South West	2,177	809	1,094	4,081	53.4	19.8	26.8	100.0

Note:

1. Figures presented are rounded. Calculations have been carried out using unrounded figures, which are available in Annex 3.

Units of Dental Activity

Units of Dental Activity (UDA) are weighted CoTs. The measure is used in the funding of NHS dental activity. More information on UDA is available in **annex 5**.

- Table 2a shows that a total of 85.5 million UDAs were carried out during 2009/10. This is a rise of 4.1 million (5.0 per cent) on the previous year. Increases were apparent in each quarter across all charge bands. The percentage of UDAs delivered at band 3 has increased each year, from 24.9 per cent in 2006/07 to 29.3 per cent in 2009/10.

Clearly, as UDA are weighted COTs, changes in UDA will be broadly similar to those for CoTs. However, some of the changes reported in CoTs reported above are inflated when considered in terms of UDA. This is because complex band 3 activity carries a higher weighting than the simpler band 1 activity and there has been greater growth in band 3 activity in recent years.

This point is well illustrated in figure 2a. In Q1 2007/08, the percentage of UDA at bands 1 and 3 was similar at around 25%. Over time, the percentage at band 3 has generally increased but the percentage at band 1 has decreased, although there is a slight seasonal pattern where the percentage of band 3 activity peaks at around the third quarter.

- As shown in figure 2d, band 3 activity makes up a significant percentage of UDA delivered to non-paying adults. In 2009/10, 48.2 per cent of UDA delivered to non paying adults were at band 3.
- Table 2g shows that London SHA is the only SHA where a greater number of all UDAs are delivered to non-paying adults (44.9 per cent) than paying adults (36.7 per cent).

Table 2a: Number and percentage of UDAs by treatment band and quarter, 2006/07 to 2009/10

	Thousands & Per cent											
	Number (000s)						Per cent of total					
	Band 1	Band 2	Band 3	Urgent	Other	Total	Band 1	Band 2	Band 3	Urgent	Other	Total
2006/07 Total	19,013	32,063	18,350	3,457	767	73,650	25.8	43.5	24.9	4.7	1.0	100.0
2007/08 Q1	4,964	8,111	4,793	914	181	18,963	26.2	42.8	25.3	4.8	1.0	100.0
Q2	4,794	8,085	4,813	935	182	18,808	25.5	43.0	25.6	5.0	1.0	100.0
Q3	4,698	8,221	5,309	960	186	19,374	24.3	42.4	27.4	5.0	1.0	100.0
Q4	4,819	8,560	5,299	951	187	19,816	24.3	43.2	26.7	4.8	0.9	100.0
Total	19,275	32,976	20,214	3,760	736	76,961	25.0	42.8	26.3	4.9	1.0	100.0
2008/09 Q1	5,016	8,500	5,144	980	186	19,826	25.3	42.9	25.9	4.9	0.9	100.0
Q2	4,973	8,402	5,258	1,000	188	19,820	25.1	42.4	26.5	5.0	1.0	100.0
Q3	4,825	8,560	5,830	1,026	190	20,431	23.6	41.9	28.5	5.0	0.9	100.0
Q4	4,989	9,007	6,082	1,007	191	21,276	23.4	42.3	28.6	4.7	0.9	100.0
Total	19,803	34,469	22,314	4,012	756	81,354	24.3	42.4	27.4	4.9	0.9	100.0
2009/10 Q1	5,139	8,607	5,759	1,033	192	20,730	24.8	41.5	27.8	5.0	0.9	100.0
Q2	5,141	8,625	5,967	1,047	191	20,971	24.5	41.1	28.5	5.0	0.9	100.0
Q3	4,963	8,720	6,559	1,081	193	21,515	23.1	40.5	30.5	5.0	0.9	100.0
Q4	5,103	9,147	6,750	1,049	191	22,241	22.9	41.1	30.3	4.7	0.9	100.0
Total	20,346	35,099	25,034	4,211	768	85,458	23.8	41.1	29.3	4.9	0.9	100.0

Notes:

- Please see Annex 5 for information on which treatments are in each treatment band.
- Figures presented are rounded. Calculations have been carried out using unrounded figures, which are available in Annex 3.

Table 2b: Change in number and percentage of UDAs by band in 2009/10

	Thousands, per cent & percentage point											
	Number (000s) & Per cent						Percentage point					
	Band 1	Band 2	Band 3	Urgent	Other	Total	Band 1	Band 2	Band 3	Urgent	Other	Total
Change 2008/09 Q1 to 2009/10 Q1	123	108	615	54	6	904	-0.5	-1.4	1.8	0.0	0.0	:
Change 2008/09 Q2 to 2009/10 Q2	168	223	709	48	3	1,151	-0.6	-1.3	1.9	0.0	0.0	:
Change 2008/09 Q3 to 2009/10 Q3	138	160	728	55	3	1,084	-0.5	-1.4	1.9	0.0	0.0	:
Change 2008/09 Q4 to 2009/10 Q4	114	140	667	43	0	964	-0.5	-1.2	1.8	0.0	0.0	:
Change 2008/09 to 2009/10	543	630	2,720	199	12	4,104	-0.5	-1.3	1.9	0.0	0.0	:
% change 2008/09 Q1 to 2009/10 Q1	2.4	1.3	12.0	5.5	3.2	4.6	:	:	:	:	:	:
% change 2008/09 Q2 to 2009/10 Q2	3.4	2.7	13.5	4.8	1.7	5.8	:	:	:	:	:	:
% change 2008/09 Q3 to 2009/10 Q3	2.9	1.9	12.5	5.3	1.5	5.3	:	:	:	:	:	:
% change 2008/09 Q4 to 2009/10 Q4	2.3	1.6	11.0	4.2	0.1	4.5	:	:	:	:	:	:
% change 2008/09 to 2009/10	2.7	1.8	12.2	5.0	1.6	5.0	:	:	:	:	:	:

Notes:

1. Please see Annex 5 for information on which treatments are in each treatment band.
2. Figures presented are rounded. Calculations have been carried out using unrounded figures, which are available in Annex 3.

Figure 2a: Percentage of UDAs delivered in each treatment band, 2007/08 to 2009/10

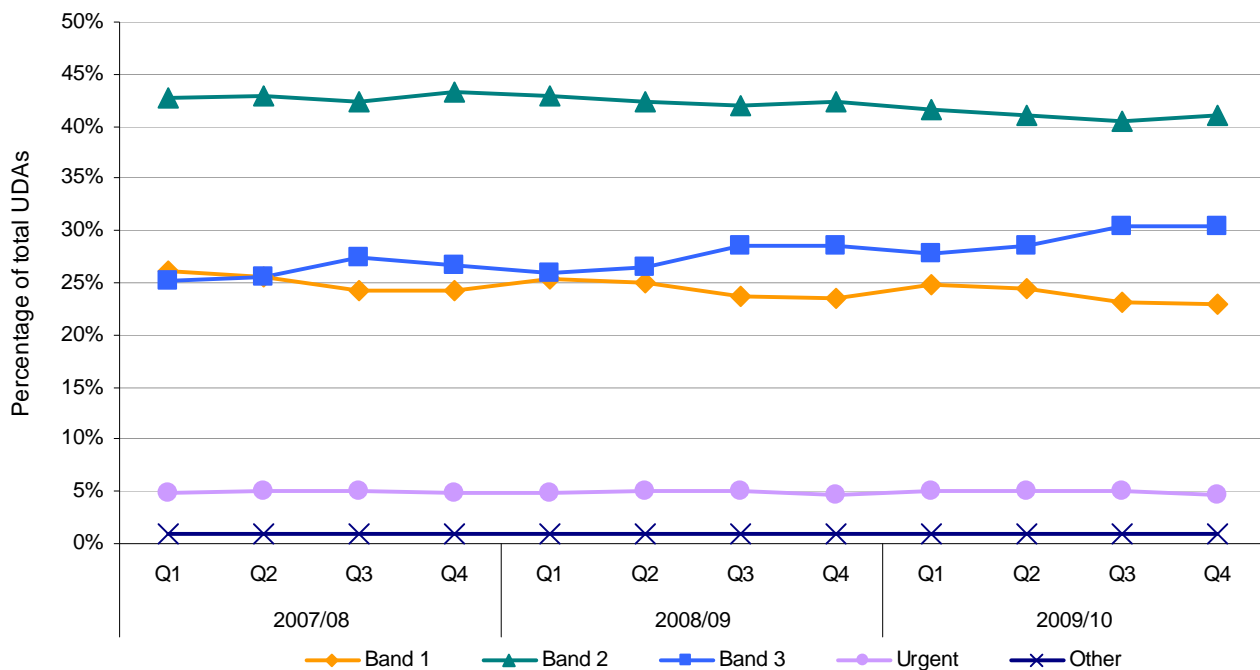


Table 2c: Number and percentage of UDAs by patient type and treatment band, 2006/07 to 2009/10

Thousands & Per cent

	Number (000s)						Per cent of total						
	Band 1	Band 2	Band 3	Urgent	Other	Total	Band 1	Band 2	Band 3	Urgent	Other	Total	
2006/07	Paying adults	9,755	15,226	8,755	1,915	-	-	51.3	47.5	47.7	55.4	-	-
	Non-paying adults	2,696	8,189	9,099	1,095	-	-	14.2	25.5	49.6	31.7	-	-
	Children	6,562	8,649	496	448	-	-	34.5	27.0	2.7	13.0	-	-
	Total	19,013	32,063	18,350	3,457	767	73,650	100.0	100.0	100.0	100.0	100.0	100.0
2007/08	Paying adults	9,827	15,762	9,463	2,009	552	37,613	51.0	47.8	46.8	53.4	75.0	48.9
	Non-paying adults	2,753	8,327	10,186	1,237	135	22,638	14.3	25.3	50.4	32.9	18.4	29.4
	Children	6,696	8,887	565	515	48	16,710	34.7	26.9	2.8	13.7	6.6	21.7
	Total	19,275	32,976	20,214	3,760	736	76,961	100.0	100.0	100.0	100.0	100.0	100.0
2008/09	Paying adults	10,175	16,680	10,231	2,094	565	39,746	51.4	48.4	45.9	52.2	74.8	48.9
	Non-paying adults	2,861	8,822	11,450	1,367	138	24,638	14.4	25.6	51.3	34.1	18.2	30.3
	Children	6,767	8,966	633	551	53	16,971	34.2	26.0	2.8	13.7	7.0	20.9
	Total	19,803	34,469	22,314	4,012	756	81,354	100.0	100.0	100.0	100.0	100.0	100.0
2009/10	Paying adults	10,285	16,857	11,045	566	2,132	40,886	50.6	48.0	44.1	50.6	73.8	47.8
	Non-paying adults	3,090	9,515	13,279	147	1,506	27,538	15.2	27.1	53.0	35.8	19.1	32.2
	Children	6,970	8,726	710	55	573	17,034	34.3	24.9	2.8	13.6	7.1	19.9
	Total	20,346	35,099	25,034	768	4,211	85,458	100.0	100.0	100.0	100.0	100.0	100.0

Notes:

1. Please see Annex 5 for information on which treatments are in each treatment band.
2. Figures presented are rounded. Calculations have been carried out using unrounded figures, which are available in Annex 3.
3. Information on 'Other' treatments by patient type in 2006/07 is not available.

Figure 2b: Percentage of UDAs by patient type for each treatment band, 2009/10

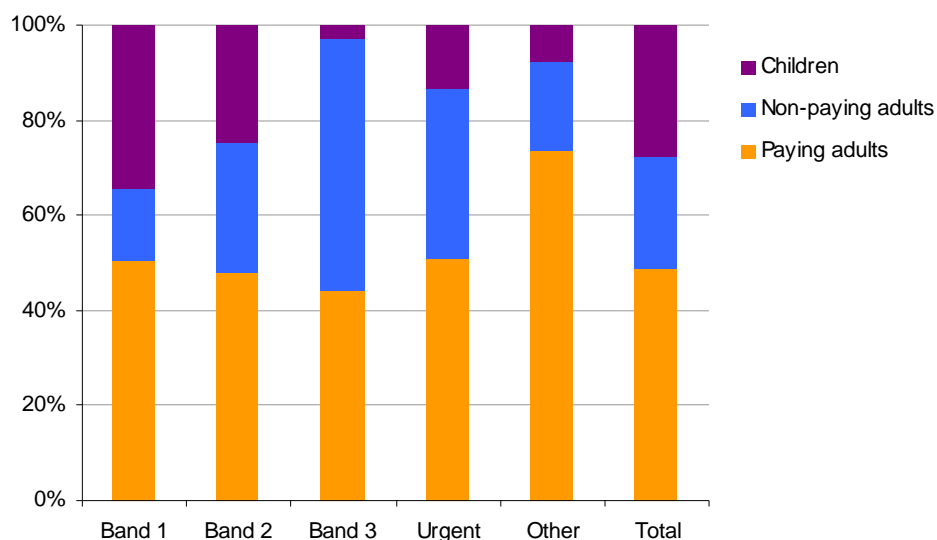


Table 2d: Percentage of UDAs by treatment band for each patient type, 2006/07 to 2009/10

	Per cent					
	Per cent of total					Total
	Band 1	Band 2	Band 3	Urgent	Other	
2006/07 Total	25.8	43.5	24.9	4.7	1.0	100.0
2007/08 Paying adults	26.1	41.9	25.2	5.3	1.5	100.0
Non-paying adults	12.2	36.8	45.0	5.5	0.6	100.0
Children	40.1	53.2	3.4	3.1	0.3	100.0
Total	25.0	42.8	26.3	4.9	1.0	100.0
2008/09 Paying adults	25.6	42.0	25.7	5.3	1.4	100.0
Non-paying adults	11.6	35.8	46.5	5.5	0.6	100.0
Children	39.9	52.8	3.7	3.2	0.3	100.0
Total	24.3	42.4	27.4	4.9	0.9	100.0
2009/10 Paying adults	25.2	41.2	27.0	5.2	1.4	100.0
Non-paying adults	11.2	34.6	48.2	5.5	0.5	100.0
Children	40.9	51.2	4.2	3.4	0.3	100.0
Total	23.8	41.1	29.3	0.9	4.9	100.0

Notes:

1. Please see Annex 5 for information on which treatments are in each treatment band.
2. Figures presented are rounded. Calculations have been carried out using unrounded figures, which are available in Annex 3.

Figure 2c: Percentage of UDAs by treatment band for each patient type, 2009/10

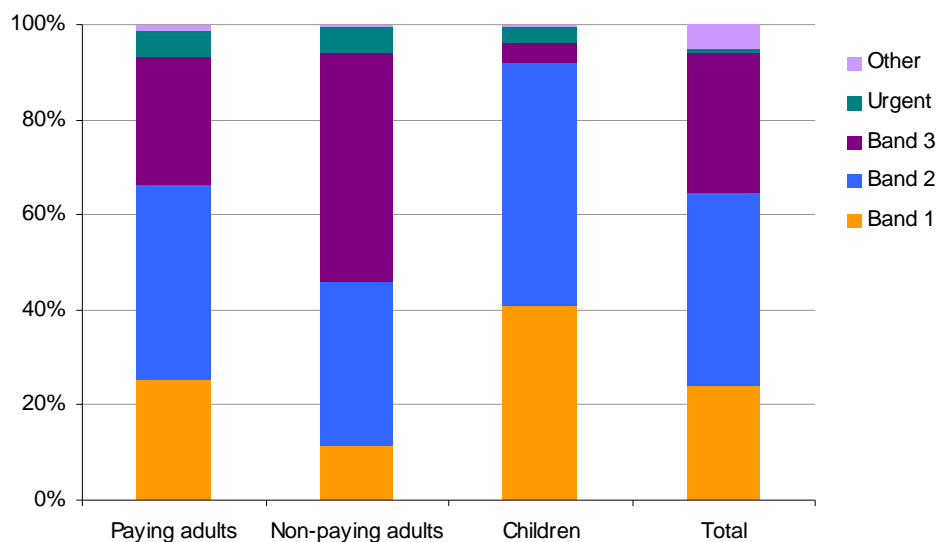


Table 2e: Number of UDAs and number of UDAs per 100,000 population by SHA, 2006/07 to 2009/10

	Number (000s)				% change 08/09 to 09/10	Number per 100,000 population				change 08/09 to 09/10
	2006/07	2007/08	2008/09	2009/10		2006/07	2007/08	2008/09	2009/10	
England	73,650	76,961	81,354	85,458	5.0	145,087	150,632	158,135	166,111	7,976
North East	4,589	4,782	4,951	5,065	2.3	179,573	186,471	192,228	196,646	4,418
North West	11,299	11,764	12,319	12,716	3.2	164,870	171,383	179,165	184,935	5,770
Yorkshire and The Humber	8,007	8,459	8,862	9,210	3.9	155,704	163,386	169,983	176,675	6,692
East Midlands	6,218	6,628	6,940	7,258	4.6	142,479	150,639	156,548	163,716	7,168
West Midlands	8,295	8,644	9,134	9,409	3.0	154,566	160,623	168,797	173,878	5,081
East of England	8,096	8,356	8,905	9,525	7.0	144,396	147,602	155,451	166,265	10,814
London	10,426	10,663	11,490	12,213	6.3	138,785	141,103	150,797	160,280	9,482
South East Coast	5,372	5,650	6,035	6,388	5.8	126,440	131,910	139,769	147,937	8,168
South Central	4,299	4,618	4,830	5,255	8.8	107,752	114,725	118,890	129,366	10,476
South West	7,050	7,397	7,889	8,421	6.7	137,585	142,855	151,450	161,647	10,197

Notes:

1. Figures presented are rounded. Calculations have been carried out using unrounded figures, which are available in Annex 3.
2. Please see Annex 5 for information on the population figures used in calculations.

Table 2f: Number and percentage of UDAs by SHA and band, 2009/10

	Thousands & Per cent											
	Number (000's)						Per cent of total					
	Band 1	Band 2	Band 3	Urgent	Other	Total	Band 1	Band 2	Band 3	Urgent	Other	Total
England	20,346	35,099	25,034	4,211	768	85,458	23.8	41.1	29.3	4.9	0.9	100.0
North East	1,112	2,074	1,583	234	61	5,065	22.0	41.0	31.3	4.6	1.2	100.0
North West	2,985	5,197	3,668	738	128	12,716	23.5	40.9	28.8	5.8	1.0	100.0
Yorkshire and The Humber	2,406	3,897	2,381	424	103	9,210	26.1	42.3	25.9	4.6	1.1	100.0
East Midlands	1,979	3,050	1,858	305	65	7,258	27.3	42.0	25.6	4.2	0.9	100.0
West Midlands	2,269	3,737	2,927	390	86	9,409	24.1	39.7	31.1	4.1	0.9	100.0
East of England	2,392	3,967	2,611	469	86	9,525	25.1	41.6	27.4	4.9	0.9	100.0
London	1,900	4,685	4,958	581	89	12,213	15.6	38.4	40.6	4.8	0.7	100.0
South East Coast	1,586	2,597	1,822	337	46	6,388	24.8	40.7	28.5	5.3	0.7	100.0
South Central	1,490	2,190	1,251	287	37	5,255	28.4	41.7	23.8	5.5	0.7	100.0
South West	2,227	3,705	1,975	446	68	8,421	26.4	44.0	23.5	5.3	0.8	100.0

Notes:

1. Please see Annex 5 for information on which treatments are in each treatment band.
2. Figures presented are rounded. Calculations have been carried out using unrounded figures, which are available in Annex 3.

Figure 2d: Percentage change in UDAs, 2008/09 to 2009/10 by SHA

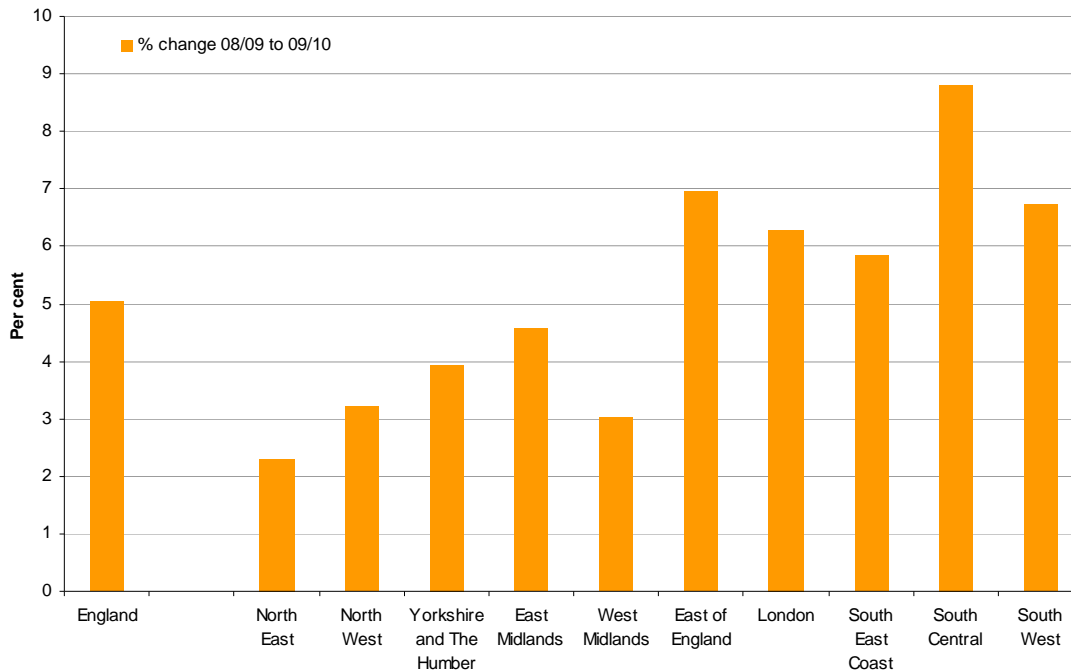


Table 2g: Number and percentage of UDAs by SHA and patient type, 2009/10

	Thousands & Per cent							
	Number (000's)				Per cent of Total			
	Paying adults	Non-paying adults	Children	Total	Paying adults	Non-paying adults	Children	Total
England	40,886	27,538	17,034	85,458	47.8	32.2	19.9	100.0
North East	2,308	1,854	902	5,065	45.6	36.6	17.8	100.0
North West	5,980	4,217	2,519	12,716	47.0	33.2	19.8	100.0
Yorkshire and The Humber	4,649	2,720	1,842	9,210	50.5	29.5	20.0	100.0
East Midlands	3,651	2,144	1,462	7,258	50.3	29.5	20.1	100.0
West Midlands	4,212	3,380	1,817	9,409	44.8	35.9	19.3	100.0
East of England	5,124	2,495	1,906	9,525	53.8	26.2	20.0	100.0
London	4,479	5,482	2,252	12,213	36.7	44.9	18.4	100.0
South East Coast	3,283	1,732	1,372	6,388	51.4	27.1	21.5	100.0
South Central	2,731	1,280	1,245	5,255	52.0	24.3	23.7	100.0
South West	4,469	2,233	1,719	8,421	53.1	26.5	20.4	100.0

Note:

1. Figures presented are rounded. Calculations have been carried out using unrounded figures, which are available in Annex 3.

Orthodontic Activity

Orthodontics is a specialist area of dentistry concerned with the growth and development of the teeth and jaws and the prevention and treatment of abnormalities of this development. Therefore most patients are children. Orthodontic activity is measured through Units of Orthodontic Activity (UOA). For more information on UOA, please refer to **annex 5**.

As Orthodontics is a specialist area, with a relatively small number of practitioners, the migration of any orthodontics practitioner from one SHA to another can significantly affect the UOA figures for the SHAs concerned, as the UOAs migrate from one SHA to another.

Table 3a shows orthodontic activity figures, first introduced in this report in 2008/09:

- A total of 4.3 million UOAs were carried out during 2009/10. This is a rise of 191,000 (4.7 per cent) on the previous year.
- North East SHA showed the largest percentage increase (29.2 per cent) from the previous year, from 142,000 in 2008/09 to 184,000 in 2009/10. North West SHA showed the largest decrease from the previous year, from 554,000 in 2008/09 to 521,000 in 2009/10, a decrease of 5.8 per cent. These changes may be attributable to practitioner migration as described above.

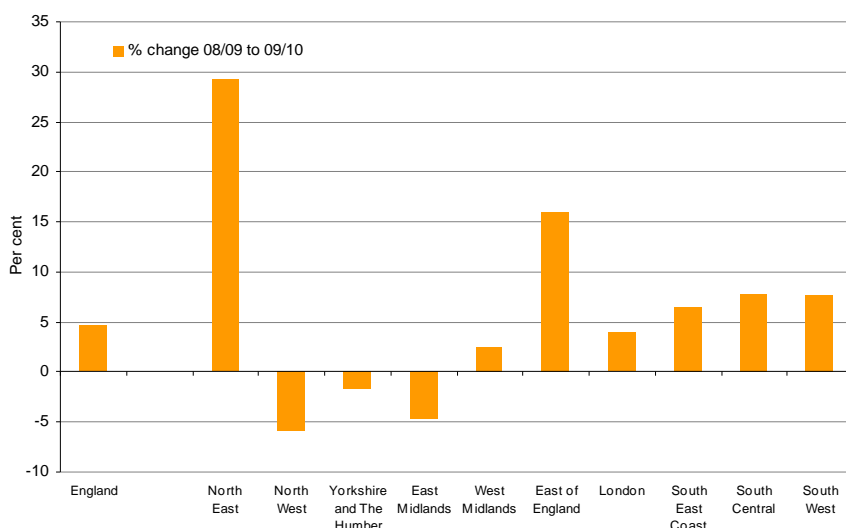
Table 3a: Units of Orthodontic Activity by SHA, 2008/09 and 2009/10

	Thousands & Per cent			
	Number (000s)			Per cent
	2008/09	2009/10	change	change
England	4,085	4,276	191	4.7
North East	142	184	42	29.2
North West	554	521	-32	-5.8
Yorkshire and The Humber	354	348	-6	-1.7
East Midlands	347	331	-16	-4.7
West Midlands	448	460	12	2.6
East of England	565	656	91	16.1
London	613	638	24	3.9
South East Coast	417	444	27	6.6
South Central	300	323	23	7.8
South West	345	372	27	7.7

NHS Dental Services reported a delay in the processing of some paper claim forms for orthodontic activity (FP17Os) for 2009/10.

The delay is likely to be concentrated on a small number of orthodontic contacts but given the sensitivity of UOA data as described above, it is possible that figures for some organisations may have been disproportionately affected by the timing of processing paper FP17Os, particularly those SHAs showing a reduction in UOAs in 2009/10.

Figure 3a: Percentage change in UOAs, 2008/09 to 2009/10 by SHA



Patients Seen

This section shows the number of individual patients who received care or treatment from an NHS dentist at least once in the most recent 24-month period. Note that orthodontic patients are included in the patients seen measure. The National Institute for Health and Clinical Excellence (NICE) recommends that patients are recalled for check ups at intervals of three months to 24 months depending on the individual's oral health status.

Note that the patients seen measure is more up-to-date than the activity figures. In this report, we show the number of patients seen up to the end of the first quarter of 2010/11.

In the 24 month period ending 30 June 2010:

- Table 4a shows that a total of 28.5 million patients were seen, an increase of 158,000 (0.6 per cent) on the 24 month period ending 31 March 2010. Increases were seen across all SHAs in this period except North East SHA, although this SHA already has the highest percentage of patients seen at 61.5 per cent.
- The total number of patients seen continues to rise above the March 2006 baseline figure. In the 24 month period up to 30 June 2010, 376,000 more patients were seen by an NHS dentist compared to the March 2006 baseline. However, as shown in figure 4b, the percentage of the population seen by an NHS dentist remains slightly below the March 2006 baseline figure. In the 24 month period up to 30 June 2010, 55.4 per cent of the population were seen compared to 55.8 per cent in the equivalent period up to March 2006.
- The percentage of the population seen by an NHS dentist exceeds the March baseline in four SHAs, as shown in table 4b and figure 4c. In North West SHA, the percentage of patients seen stood at 60.9 per cent in the 24 month period up to 30 June 2010, a 1.3 percentage point rise on the March 2006 baseline.
- Annex 3 shows that, at the Primary Care Trust level, the percentage of patients seen in the 24 months up to 30 June 2010 ranges from 23.8 per cent in Kensington and Chelsea PCT to 76.9 per cent at Great Yarmouth & Waveney PCT. Note that this report does not include private dental activity, which may explain the range in PCT level figures. Revised population estimates soon to be issued by the Office for National Statistics are likely to have an impact on figures for the percentage of patients seen, particularly at the local level.
- Table 4a shows that the number of adult patients seen has risen by 466,000 (2.3 per cent) since the baseline date. Although the number of child patients seen in the 24 month period up to 30 June 2010 is 90,000 (1.1 per cent) below the March 2006 baseline, this figure has increased in each quarter since June 2008.

Table 4a: Number of patients seen and the percentage of the population seen in the previous 24 months, March 2006 to June 2010

	Thousands & Per cent					
	Number (000s)			Proportion of population (per cent)		
	Adults	Children	Total	Adults	Children	Total
31 Mar 06	20,348	7,797	28,145	51.6	70.7	55.8
30 Jun 06	20,301	7,767	28,068	51.5	70.4	55.6
30 Sep 06	20,302	7,781	28,084	51.5	70.5	55.6
31 Dec 06	20,290	7,786	28,076	51.5	70.6	55.6
31 Mar 07	20,285	7,813	28,098	51.0	71.0	55.4
30 Jun 07	20,101	7,778	27,879	50.5	70.7	54.9
30 Sep 07	19,873	7,729	27,602	50.0	70.3	54.4
31 Dec 07	19,608	7,655	27,264	49.3	69.6	53.7
31 Mar 08	19,435	7,615	27,049	48.5	69.3	52.9
30 Jun 08	19,348	7,587	26,935	48.3	69.0	52.7
30 Sep 08	19,439	7,594	27,033	48.5	69.1	52.9
31 Dec 08	19,660	7,612	27,272	49.0	69.2	53.4
31 Mar 09	19,869	7,632	27,502	49.1	69.3	53.5
30 Jun 09	20,013	7,643	27,656	49.5	69.4	53.8
30 Sep 09	20,214	7,659	27,873	50.0	69.6	54.2
31 Dec 09	20,477	7,686	28,163	50.6	69.8	54.7
31 Mar 10	20,668	7,694	28,363	51.1	69.9	55.1
30 Jun 10	20,814	7,707	28,521	51.5	70.0	55.4
Change Mar 06 to Jun 10	466	-90	376	-0.1	-0.6	-0.3
Change Mar 10 to Jun 10	145	13	158	0.4	0.1	0.3
% Change Mar 06 to Jun 10	2.3	-1.1	1.3	:	:	:
% Change Mar 10 to Jun 10	0.7	0.2	0.6	:	:	:

Notes:

1. Figures presented are rounded. Calculations have been carried out using unrounded figures, which are available in Annex 3.
2. Please see Annex 5 for information on the population figures used in calculations.

Figure 4a: Patients seen in the previous 24 months, March 2006 to June 2010

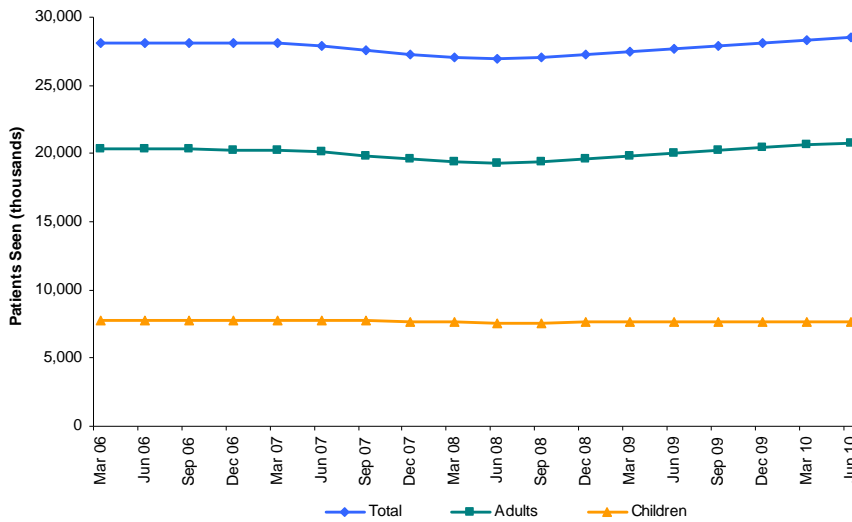


Figure 4b: Total patients seen and percentage of population seen in the previous 24 months, March 2006 to June 2010

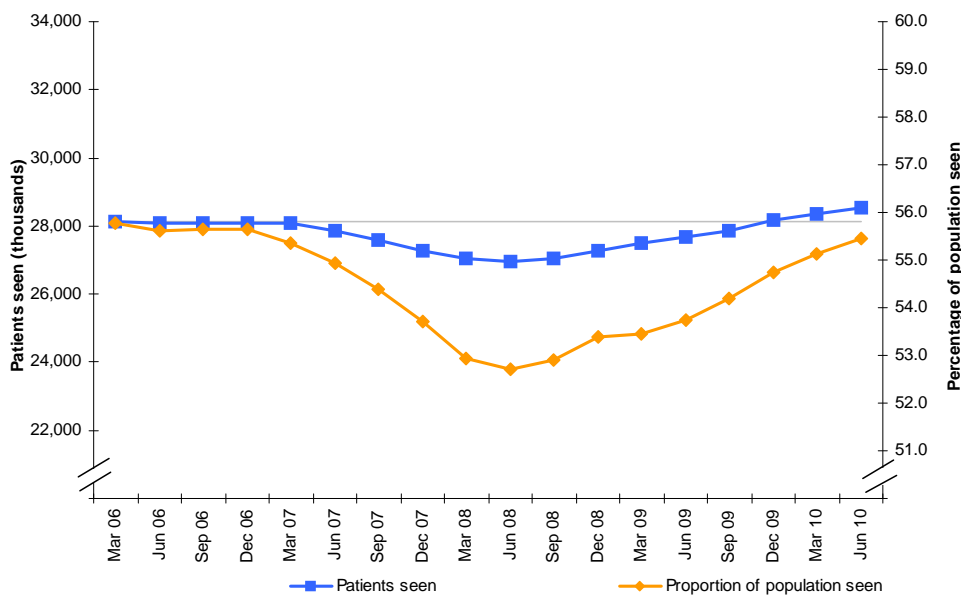


Table 4b: Number and percentage of patients seen in the previous 24 months by SHA, March 2006, March 2010 and June 2010

Thousands, per cent & percentage point

	Numbers (000s)					Per cent change		Proportion of Population			Percentage point change	
	31-Mar-06 (baseline)	31-Mar-10 (end Q4)	30-Jun-10 (end Q1)	Change Mar 06 to Jun 10	Change Mar 10 to Jun 10	Mar 06 to Jun 10	Mar 10 to Jun 10	31-Mar-06 (baseline)	31-Mar-10 (end Q4)	30-Jun-10 (end Q1)	Mar 06 to Jun 10	Mar 10 to Jun 10
England	28,145	28,363	28,521	376	158	1.3	0.6	55.8	55.1	55.4	-0.3	0.3
North East	1,625	1,583	1,583	-42	0	-2.6	0.0	63.7	61.5	61.5	-2.3	0.0
North West	4,081	4,181	4,189	107	8	2.6	0.2	59.7	60.8	60.9	1.3	0.1
Yorkshire and The Humber	2,984	3,083	3,094	110	11	3.7	0.4	58.4	59.1	59.4	0.9	0.2
East Midlands	2,515	2,432	2,441	-74	10	-2.9	0.4	58.1	54.9	55.1	-3.1	0.2
West Midlands	3,085	3,082	3,093	7	11	0.2	0.3	57.7	57.0	57.2	-0.5	0.2
East of England	3,214	3,228	3,245	31	17	1.0	0.5	57.8	56.4	56.6	-1.1	0.3
London	3,890	3,903	3,945	56	42	1.4	1.1	52.2	51.2	51.8	-0.4	0.6
South East Coast	2,170	2,146	2,169	-1	23	-0.1	1.1	51.4	49.7	50.2	-1.2	0.5
South Central	1,868	1,908	1,929	61	21	3.3	1.1	47.1	47.0	47.5	0.4	0.5
South West	2,711	2,817	2,833	122	16	4.5	0.6	53.3	54.1	54.4	1.1	0.3

Notes:

1. Figures presented are rounded. Calculations have been carried out using unrounded figures, which are available in Annex 3.
2. Please see Annex 5 for information on the population figures used in calculations.

Data shown in Table 4b are available split for adults and children in annex 1 as tables 4c and 4d.

Figure 4c: Percentage of patients seen in the previous 24 months by SHA, March 2006 to June 2010



Patient Charges

Paying adults are charged according to the treatment band of the Course of Treatment. Please see **annex 5** for more detail on patient charges.

Table 5a shows:

- Patient charge revenue for 2009/10 was calculated as £597.6 million, an increase of £25.9 million (4.5 per cent) on 2008/09.
- While revenue increased in all chargeable bands in 2009/10, the largest increase was seen in band 3 at 8.2 per cent, reflecting the greater growth in activity at this level. The percentage of revenue from band 3 activity now exceeds that for band 1. In 2006/07 band 1 activity made up 31.1 per cent of patient charge revenue compared to 24.9 per cent for band 3 activity. In 2009/10, equivalent figures were 27.9 per cent for band 1 and 29.1 per cent for band 3.

Table 5a: Patient charge revenue by treatment band, 2006/07 to 2009/10

	Millions, per cent and percentage point										
	£ millions				Change		Proportion				Change
	2006/07	2007/08	2008/09	2009/10	Change (millions) 08/09 to 09/10	Per cent change 08/09 to 09/10	2006/07	2007/08	2008/09	2009/10	Percentage point change 08/09 to 09/10
Band 1	147.9	153.7	162.0	166.8	4.8	3.0	31.1	28.9	28.3	27.9	-0.4
Band 2	185.8	206.3	222.1	229.1	7.0	3.2	39.1	38.8	38.8	38.3	-0.5
Band 3	118.6	146.3	161.0	174.2	13.1	8.2	24.9	27.5	28.2	29.1	1.0
Urgent	23.1	25.2	26.6	27.5	0.9	3.3	4.9	4.7	4.7	4.6	-0.1
Total	475.4	531.4	571.7	597.6	25.9	4.5	100.0	100.0	100.0	100.0	0.0

Notes:

1. Data on patient charge revenue in this report is based on the amount calculated as recoverable from the contract payment based on the activity scheduled and patient charges recorded on the FP 17. It may not correspond exactly to the charge income reported by PCTs in their financial accounts for a number of reasons, including the fact that PCTs may have to incorporate an estimate of charge income collected in the final phase of the financial year because their accounts have to be prepared before the activity data for the full year becomes available.

2. 2006/07 data excludes revenue from CoTs which began before 1 April 2006 but were completed in 2006/07 due to the transition to the new contract system.

3. 'Other' treatments carry no patient charge.

Workforce

For information on dental workforce data, including definitions of dentist types, dental contract types and joiners and leavers, please refer to our guide to NHS dental publications at www.ic.nhs.uk/pubs/dental.

Number of Dentists

- As shown in table 6a, 22,000 dentists performed NHS activity during 2009/10. This is an increase of 660 (3.1 per cent) on 2008/09.

Table 6a: Number of dentists with NHS activity within the year ending 31 March, 2006/07 to 2009/10

	Number and per cent			
	2006/07	2007/08	2008/09	2009/10
Dentists	20,160	20,815	21,343	22,003
Joiners	-	1,709	1,803	1,899
Leavers	1,054	1,275	1,239	-
Net change from previous year	-	655	528	660
% change from previous year	-	3.2	2.5	3.1

Notes:

- Dentists are defined as performers with NHS activity recorded by FP17 forms.
- Data consists of performers in General Dental Services (GDS), Personal Dental Services (PDS) and Trust-led Dental Services (TDS).
- Net change is calculated by subtracting the previous years leavers from the current years joiners, for example $660 = 1,899 - 1,239$

Dentists by Contract Type

- In 2009/10, General Dental Services (GDS) accounted for the majority of contract types at 72.5 per cent of all dentists, as shown in table 6b.

Due to the time-limited nature of Personal Dental Services (PDS) agreements the figures from 2008/09 may be affected by how PCTs maintain the Payments On Line system (POL). Many PDS contracts are set up for a limited three year period. In anticipation that these contracts would expire, some dentists are known to have exercised their statutory right to have their PDS contracts terminated, and be issued with GDS contracts, which are not time-limited. This action would have had an immediate effect in reclassifying all performers who had worked under these PDS agreements to GDS agreements and should be considered when interpreting information by contract type at both a national and local level.

Table 6b: Number and percentage of dentists with NHS activity in the year ending 31 March, by contract type, 2006/07 to 2009/10

	Number and per cent							
	Number				Per cent			
	2006/07	2007/08	2008/09	2009/10	2006/07	2007/08	2008/09	2009/10
Total	20,160	20,815	21,343	22,003	100.0	100.0	100.0	100.0
GDS	12,263	12,438	14,605	15,961	60.8	59.8	68.4	72.5
PDS	5,263	5,322	3,338	2,644	26.1	25.6	15.6	12.0
Mixed	1,129	1,539	1,862	1,896	5.6	7.4	8.7	8.6
TDS	1,505	1,516	1,538	1,502	7.5	7.3	7.2	6.8

Notes:

1. Dentists are defined as performers with NHS activity recorded by FP17 forms.
2. Dentists categorised as General Dental Services (GDS) or Personal Dental Services (PDS) may have performed some Trust-led Dental Services (TDS) activity.

Table 6c: Number and percentage of dentists who left the NHS in the year ending 31 March, by contract type, 2006/07 to 2008/09³

	Number and per cent					
	Number			Per cent of leavers		
	2006/07	2007/08	2008/09	2006/07	2007/08	2008/09
Total	1,054	1,275	1,239	100.0	100.0	100.0
GDS	667	792	851	63.3	62.1	68.7
PDS	272	311	217	25.8	24.4	17.5
Mixed	15	48	35	1.4	3.8	2.8
TDS	100	124	136	9.5	9.7	11.0

Notes:

1. A leaver is defined as a performer who did some NHS work in the specified year but none in the year after, as recorded via FP17 forms.
2. Dentists categorised as General Dental Services (GDS) or Personal Dental Services (PDS) may have performed some Trust-led Dental Services (TDS) activity.
3. Data on leavers from 2009/10 cannot be calculated yet (requires 2010/11 data).

Table 6d: Number and percentage of dentists who joined the NHS in the year ending 31 March, by contract type, 2007/08³ to 2009/10

	Number and per cent					
	Number			Per cent of joiners		
	2007/08	2008/09	2009/10	2007/08	2008/09	2009/10
Total	1,709	1,803	1,899	100.0	100.0	100.0
GDS	1,003	1,245	1,515	58.7	69.1	79.8
PDS	510	319	242	29.8	17.7	12.7
Mixed	73	95	49	4.3	5.3	2.6
TDS	123	144	93	7.2	8.0	4.9

Notes:

1. A joiner is defined as a performer who did some NHS work in the specified year but none in the year before, as recorded via FP17 forms.
2. Dentists categorised as General Dental Services (GDS) or Personal Dental Services (PDS) may have performed some Trust-led Dental Services (TDS) activity.
3. Data on joiners in 2006/07 are not calculated as a different methodology was used in 2005/06 to count the number of dentists.

Dentists by Dentist Type

- Table 6e shows that, in 2009/10, there were over 6,200 Providing Performer dentists, who have a direct contractual relationship with the PCT, making up 28.5 per cent of all dentists. This is 7.4 per cent decrease on 2008/09.
- The shift to a greater percentage of Performer only dentists continues. In 2006/07, the percentage of dentists who operated as a Performer only stood at 62.4 per cent. By 2009/10 this percentage had increased to 71.5 per cent (see table 6e).

Table 6e: Number and percentage of dentists with NHS activity in the year ending 31 March, by dentist type, 2006/07 to 2009/10

	Number					% change 2008/09 to 2009/10	Per cent			
	Number				2006/07		Per cent			
	2006/07	2007/08	2008/09	2009/10			2006/07	2007/08	2008/09	2009/10
Total	20,160	20,815	21,343	22,003	3.1	100.0	100.0	100.0	100.0	
Providing performer	7,585	7,286	6,778	6,279	-7.4	37.6	35.0	31.8	28.5	
Performer only	12,575	13,529	14,565	15,724	8.0	62.4	65.0	68.2	71.5	

Notes:

1. Dentists are defined as performers with NHS activity recorded by FP17 forms.
2. Data consists of performers in General Dental Services (GDS), Personal Dental Services (PDS) and Trust-led Dental Services (TDS).

Table 6f: Number and percentage of dentists who left the NHS in the year ending 31 March, by dentist type, 2006/07 to 2008/09³

	Number			Per cent of leavers		
	Number			2006/07	Per cent of leavers	
	2006/07	2007/08	2008/09		2006/07	2007/08
Total	1,054	1,275	1,239	100.0	100.0	100.0
Providing performer	290	342	283	27.5	26.8	22.8
Performer only	764	933	956	72.5	73.2	77.2

Notes:

1. A leaver is defined as a performer who did some NHS work in the specified year but none in the year after, as recorded via FP17 forms.
2. Data consists of performers who left the General Dental Services (GDS), Personal Dental Services (PDS) or Trust-led Dental Services (TDS).
3. Data on leavers from 2009/10 cannot be calculated yet (requires 2010/11 data).

Table 6g: Number and percentage of dentists who joined the NHS in the year ending 31 March, by dentist type, 2007/08³ to 2009/10

	Number			Per cent of joiners		
	Number			2007/08	Per cent of joiners	
	2007/08	2008/09	2009/10		2007/08	2008/09
Total	1,709	1,803	1,899	100.0	100.0	100.0
Providing performer	28	17	23	1.6	0.9	1.2
Performer only	1,681	1,786	1,876	98.4	99.1	98.8

Notes:

1. A joiner is defined as a performer who did some NHS work in the specified year but none in the year before, as recorded via FP17 forms.
2. Data consists of performers in General Dental Services (GDS), Personal Dental Services (PDS) and Trust-led Dental Services (TDS).
3. Data on joiners in 2006/07 are not calculated as a different methodology was used in 2005/06 to count the number of dentists.

Dentists by Gender

- Table 6h shows that the increase in the percentage of female dentists continues. In 2009/10 this percentage had risen to 42.2 per cent, up from 38.8 per cent in 2006/07.
- In 2009/10, the number of female dentists stood at almost 9,300. This is a 5.6 per cent increase on the previous year, as shown in table 6h.

Table 6h: Number and percentage of dentists with NHS activity in year ending 31 March, by gender, 2006/07 to 2009/10

	Number and per cent								
	Number					Per cent			
	2006/07	2007/08	2008/09	2009/10	% change 2008/09 to 2009/10	2006/07	2007/08	2008/09	2009/10
Total	20,160	20,815	21,343	22,003	3.1	100.0	100.0	100.0	100.0
Female	7,824	8,351	8,798	9,295	5.6	38.8	40.1	41.2	42.2
Male	12,336	12,464	12,545	12,708	1.3	61.2	59.9	58.8	57.8

Notes:

1. Dentists are defined as performers with NHS activity recorded by FP17 forms.
2. Data consists of performers in General Dental Services (GDS), Personal Dental Services (PDS) and Trust-led Dental Services (TDS).

Table 6i: Number and percentage of dentists who left the NHS in year ending 31 March, by gender, 2006/07 to 2008/09³

	Number and per cent					
	Number			Per cent of leavers		
	2006/07	2007/08	2008/09	2006/07	2007/08	2008/09
Total	1,054	1,275	1,239	100.0	100.0	100.0
Female	404	532	544	38.3	41.7	43.9
Male	650	743	695	61.7	58.3	56.1

Notes:

1. A leaver is defined as a performer who did some NHS work in the specified year but none in the year after, as recorded via FP17 forms.
2. Data consists of performers who left the General Dental Services (GDS), Personal Dental Services (PDS) or Trust-led Dental Services (TDS).
3. Data on leavers in 2009/10 cannot be calculated yet (requires 2010/11 data).

Table 6j: Number and percentage of dentists who joined the NHS in year ending 31 March, by gender, 2007/08³ to 2009/10

	Number and per cent					
	Number			Per cent of joiners		
	2007/08	2008/09	2009/10	2007/08	2008/09	2009/10
Total	1,709	1,803	1,899	100.0	100.0	100.0
Female	931	979	1,037	54.5	54.3	54.6
Male	778	824	862	45.5	45.7	45.4

Notes:

1. A joiner is defined as a performer who did some NHS work in the specified year but none in the year before, as recorded via FP17 forms.
2. Data consists of performers in General Dental Services (GDS), Personal Dental Services (PDS) and Trust-led Dental Services (TDS).
3. Data on joiners in 2006/07 are not calculated as a different methodology was used in 2005/06 to count the number of dentists.

Dentists by Age Group

- As shown in table 6k, since 2006/07, there has been an increase in the number of dentists across all age groups. The percentage of dentists in the under-35 and over-55 age groups has slightly increased in the period.
- 38.7 per cent of the 1,239 leavers in 2008/09 were under 35, as shown in table 6l.

Table 6k: Number and percentage of dentists with NHS activity, by age group, in year ending 31 March, 2006/07 to 2009/10

	Number and per cent							
	Number				Per cent			
	2006/07	2007/08	2008/09	2009/10	2006/07	2007/08	2008/09	2009/10
Total	20,160	20,815	21,343	22,003	100.0	100.0	100.0	100.0
Under 35	7,060	7,433	7,770	8,048	35.0	35.7	36.4	36.6
35-44	5,731	5,762	5,742	5,853	28.4	27.7	26.9	26.6
45-54	4,829	4,904	5,026	5,182	24.0	23.6	23.5	23.6
55 or over	2,540	2,716	2,805	2,920	12.6	13.0	13.1	13.3

Notes:

1. Dentists are defined as performers with NHS activity recorded by FP17 forms.

2. Data consists of performers in General Dental Services (GDS), Personal Dental Services (PDS) and Trust-led Dental Services (TDS).

Table 6l: Number and percentage of dentists who left the NHS, by age group, in the year ending 31 March, 2006/07 to 2008/09³

	Number and per cent					
	Number			Per cent of leavers		
	2006/07	2007/08	2008/09	2006/07	2007/08	2008/09
Total	1,054	1,275	1,239	100.0	100.0	100.0
Under 35	401	489	479	38.0	38.4	38.7
35-44	219	249	247	20.8	19.5	19.9
45-54	174	210	180	16.5	16.5	14.5
55 or over	260	327	333	24.7	25.6	26.9

Notes:

1. A leaver is defined as a performer who did some NHS work in the specified year but none in the year after, as recorded via FP17 forms.

2. Data consists of performers who left the General Dental Services (GDS), Personal Dental Services (PDS) or Trust-led Dental Services (TDS).

3. Data on leavers in 2009/10 cannot be calculated yet (requires 2010/11 data).

Table 6m: Number and percentage of dentists who joined the NHS, by age group, in the year ending 31 March, 2007/08³ to 2009/10

	Number and per cent					
	Number			Per cent of joiners		
	2007/08	2008/09	2009/10	2007/08	2008/09	2009/10
Total	1,709	1,803	1,899	100.0	100.0	100.0
Under 35	1,315	1,368	1,429	76.9	75.9	75.3
35-44	248	261	290	14.5	14.5	15.3
45-54	82	105	118	4.8	5.8	6.2
55 or over	64	69	62	3.7	3.8	3.3

Notes:

1. A joiner is defined as a performer who did some NHS work in the specified year but none in the year before, as recorded via FP17 forms.

2. Data consists of performers in General Dental Services (GDS), Personal Dental Services (PDS) and Trust-led Dental Services (TDS).

3. Data on joiners in 2006/07 are not calculated as a different methodology was used in 2005/06 to count the number of dentists.

Dentists by Age and Gender

- There are significant differences in the gender profile of each age group. Table 6n shows that the under-35 age group is the sole group with a greater number of female dentists. This percentage continues to rise. In 2006/07, 51.8 per cent of all dentists under-35 were female. This figure had risen to 54.1 per cent by 2009/10.

Table 6n: Number and percentage of dentists with NHS activity, by gender and by age group, in the year ending 31 March, 2006/07 to 2009/10

		Number			Per cent		
		Female	Male	Total	Female	Male	Total
2006/07	Total	7,824	12,336	20,160	38.8	61.2	100.0
	Under 35	3,656	3,404	7,060	51.8	48.2	100.0
	35-44	2,311	3,420	5,731	40.3	59.7	100.0
	45-54	1,417	3,412	4,829	29.3	70.7	100.0
	55 or over	440	2,100	2,540	17.3	82.7	100.0
2007/08	Total	8,351	12,464	20,815	40.1	59.9	100.0
	Under 35	3,941	3,492	7,433	53.0	47.0	100.0
	35-44	2,439	3,323	5,762	42.3	57.7	100.0
	45-54	1,472	3,432	4,904	30.0	70.0	100.0
	55 or over	499	2,217	2,716	18.4	81.6	100.0
2008/09	Total	8,798	12,545	21,343	41.2	58.8	100.0
	Under 35	4,165	3,605	7,770	53.6	46.4	100.0
	35-44	2,522	3,220	5,742	43.9	56.1	100.0
	45-54	1,581	3,445	5,026	31.5	68.5	100.0
	55 or over	530	2,275	2,805	18.9	81.1	100.0
2009/10	Total	9,295	12,708	22,003	42.2	57.8	100.0
	Under 35	4,350	3,698	8,048	54.1	45.9	100.0
	35-44	2,683	3,170	5,853	45.8	54.2	100.0
	45-54	1,665	3,517	5,182	32.1	67.9	100.0
	55 or over	597	2,323	2,920	20.4	79.6	100.0

Notes:

1. Dentists are defined as performers with NHS activity recorded by FP17 forms.
2. Data consists of performers in General Dental Services (GDS), Personal Dental Services (PDS) and Trust-led Dental Services (TDS).

Figure 6a: Percentage of dentists with NHS activity, by gender and by age group, 2006/07 and 2009/10

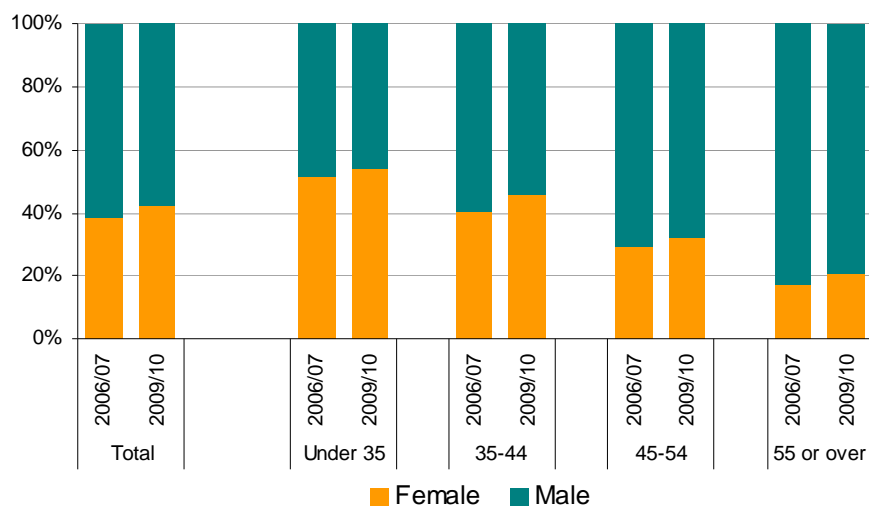


Table 6o: Number and percentage of dentists who left the NHS in the year ending 31 March, by age and gender, 2006/07 to 2008/09³

		Number and per cent					
		Number			Per cent		
		Female	Male	Total	Female	Male	Total
2006/07	Total	404	650	1,054	38.3	61.7	100.0
	Under 35	206	195	401	51.4	48.6	100.0
	35-44	93	126	219	42.5	57.5	100.0
	45-54	58	116	174	33.3	66.7	100.0
	55 or over	47	213	260	18.1	81.9	100.0
2007/08	Total	532	743	1,275	41.7	58.3	100.0
	Under 35	293	196	489	59.9	40.1	100.0
	35-44	105	144	249	42.2	57.8	100.0
	45-54	70	140	210	33.3	66.7	100.0
	55 or over	64	263	327	19.6	80.4	100.0
2008/09	Total	544	695	1,239	43.9	56.1	100.0
	Under 35	294	185	479	61.4	38.6	100.0
	35-44	120	127	247	48.6	51.4	100.0
	45-54	57	123	180	31.7	68.3	100.0
	55 or over	73	260	333	21.9	78.1	100.0

Notes:

1. A leaver is defined as a performer who did some NHS work in the specified year but none in the year after, as recorded via FP17 forms.
2. Data consists of performers who left the General Dental Services (GDS), Personal Dental Services (PDS) or Trust-led Dental Services (TDS).
3. Data on leavers from 2009/10 cannot be calculated yet (requires 2010/11 data).

Table 6p: Number and percentage of dentists who joined the NHS in the year ending 31 March, by age and gender, 2007/08³ to 2009/10

		Number and per cent					
		Number			Per cent		
		Female	Male	Total	Female	Male	Total
2007/08	Total	931	778	1,709	54.5	45.5	100.0
	Under 35	733	582	1,315	55.7	44.3	100.0
	35-44	149	99	248	60.1	39.9	100.0
	45-54	37	45	82	45.1	54.9	100.0
	55 or over	12	52	64	18.8	81.3	100.0
2008/09	Total	979	824	1,803	54.3	45.7	100.0
	Under 35	780	588	1,368	57.0	43.0	100.0
	35-44	148	113	261	56.7	43.3	100.0
	45-54	39	66	105	37.1	62.9	100.0
	55 or over	12	57	69	17.4	82.6	100.0
2009/10	Total	1,037	862	1,899	54.6	45.4	100.0
	Under 35	826	603	1,429	57.8	42.2	100.0
	35-44	157	133	290	54.1	45.9	100.0
	45-54	43	75	118	36.4	63.6	100.0
	55 or over	11	51	62	17.7	82.3	100.0

Notes:

1. A joiner is defined as a performer who did some NHS work in the specified year but none in the year before, as recorded via FP17 forms.
2. Data consists of performers in General Dental Services (GDS), Personal Dental Services (PDS) and Trust-led Dental Services (TDS).
3. Data on joiners in 2006/07 are not calculated as a different methodology was used in 2005/06 to count the number of dentists.

Dentists by SHA

- Table 6q shows that the number of dentists has increased in each SHA between 2008/09 and 2009/10. The increase varied from 6.8 per cent in South Central SHA to 2.1 per cent in North East SHA and West Midlands SHA.
- South East Coast SHA and London SHA have the highest number of dentists per 100,000 population at 51.8 and 50.3 respectively, as shown in figure 6b.

Table 6q: Number of dentists with recorded NHS activity by SHA, in the year ending 31 March, 2006/07 to 2009/10

	Number and per cent				
	2006/7	2007/08	2008/09	2009/10	% change 2008/09 to 2009/10
England	20,160	20,815	21,343	22,003	3.1
North East	980	1,049	1,108	1,131	2.1
North West	2,838	2,963	3,117	3,232	3.7
Yorkshire and the Humber	1,933	2,051	2,157	2,273	5.4
East Midlands	1,610	1,741	1,770	1,829	3.3
West Midlands	2,007	2,095	2,162	2,207	2.1
East of England	2,358	2,411	2,472	2,612	5.7
London	3,480	3,625	3,755	3,900	3.9
South East Coast	1,975	2,087	2,144	2,247	4.8
South Central	1,643	1,713	1,753	1,872	6.8
South West	2,210	2,322	2,376	2,477	4.3

Notes:

1. Dentists are defined as performers with NHS activity recorded by FP17 forms.
2. Data consists of performers in General Dental Services (GDS), Personal Dental Services (PDS) and Trust-led Dental Services (TDS).
3. Dentists will be counted more than once if they had a contract in more than one SHA. England totals exclude duplication.

Table 6r: Population per dentist and dentists per 100,000 population, by SHA, during the year ending 31 March, 2006/07 to 2009/10

	Number and rate							
	Population per dentist				Dentists per 100,000 population			
	2006/7	2007/08	2008/09	2009/10	2006/7	2007/08	2008/09	2009/10
England	2,518	2,455	2,411	2,355	39.7	40.7	41.5	42.5
North East	2,608	2,445	2,320	2,285	38.3	40.9	43.1	43.8
North West	2,415	2,317	2,205	2,134	41.4	43.2	45.3	46.9
Yorkshire and the Humber	2,660	2,524	2,419	2,313	37.6	39.6	41.3	43.2
East Midlands	2,711	2,527	2,502	2,434	36.9	39.6	40.0	41.1
West Midlands	2,674	2,569	2,502	2,461	37.4	38.9	40.0	40.6
East of England	2,378	2,348	2,313	2,208	42.1	42.6	43.2	45.3
London	2,159	2,085	2,042	1,988	46.3	48.0	49.0	50.3
South East Coast	2,151	2,052	2,010	1,932	46.5	48.7	49.8	51.8
South Central	2,428	2,350	2,316	2,188	41.2	42.6	43.2	45.7
South West	2,319	2,230	2,193	2,112	43.1	44.8	45.6	47.4

Notes:

1. Dentists are defined as performers with NHS activity recorded by FP17 forms.
2. Data consists of performers in General Dental Services (GDS), Personal Dental Services (PDS) and Trust-led Dental Services (TDS).
3. Please see Annex 5 for information on the population figures used in calculations.
4. Dentists will be counted more than once if they had a contract in more than one SHA. England totals exclude duplication.

Figure 6b: Dentists per 100,000 population, by SHA, during the year ending 31 March 2010



Table 6s: Number and percentage of dentists who left the NHS, by SHA, in the year ending 31 March, 2006/07 to 2008/09⁴

	Number and per cent					
	Number			Percentage of total dentists		
	2006/07	2007/08	2008/09	2006/07	2007/08	2008/09
England	1,054	1,275	1,239	5.2	6.1	5.8
North East	31	51	67	3.2	4.9	6.0
North West	135	163	155	4.8	5.5	5.0
Yorkshire and the Humber	100	117	99	5.2	5.7	4.6
East Midlands	59	106	112	3.7	6.1	6.3
West Midlands	81	95	93	4.0	4.5	4.3
East of England	139	140	118	5.9	5.8	4.8
London	187	225	228	5.4	6.2	6.1
South East Coast	107	134	117	5.4	6.4	5.5
South Central	93	101	100	5.7	5.9	5.7
South West	131	170	173	5.9	7.3	7.3

Notes:

1. A leaver is defined as a performer who did some NHS work in the specified year but none in the year after, as recorded via FP17 forms.
2. Data consists of performers who left the General Dental Services (GDS), Personal Dental Services (PDS) or Trust-led Dental Services (TDS).
3. Dentists will be counted more than once if they had a contract in more than one SHA. England totals exclude duplication.
4. Data on leavers from 2009/10 cannot be calculated yet (requires 2010/11 data).

Table 6t: Number and percentage of dentists who joined the NHS, by SHA, in the year ending 31 March, 2007/08⁴ to 2009/10

	Number and per cent					
	Number			Percentage of total dentists		
	2007/08	2008/09	2009/10	2007/08	2008/09	2009/10
England	1,709	1,803	1,899	8.2	8.4	8.6
North East	93	103	89	8.9	9.3	7.9
North West	249	306	279	8.4	9.8	8.6
Yorkshire and the Humber	157	190	188	7.7	8.8	8.3
East Midlands	169	164	172	9.7	9.3	9.4
West Midlands	151	147	153	7.2	6.8	6.9
East of England	158	168	200	6.6	6.8	7.7
London	272	268	263	7.5	7.1	6.7
South East Coast	148	175	203	7.1	8.2	9.0
South Central	139	116	146	8.1	6.6	7.8
South West	232	235	290	10.0	9.9	11.7

Notes:

1. A joiner is defined as a performer who did some NHS work in the specified year but none in the year before, as recorded via FP17 forms.
2. Data consists of performers in General Dental Services (GDS), Personal Dental Services (PDS) and Trust-led Dental Services (TDS).
3. Dentists will be counted more than once if they had a contract in more than one SHA. England totals exclude duplication.
4. Data on joiners in 2006/07 are not calculated as a different methodology was used in 2005/06 to count the number of dentists.

Figures 7a to 7d: Thematic maps of selected measures, England

Figure 7a: Patients seen by an NHS dentist as a proportion of the population, by Primary Care Trust (PCT), in England in the 24 month period ending 30 June 2010

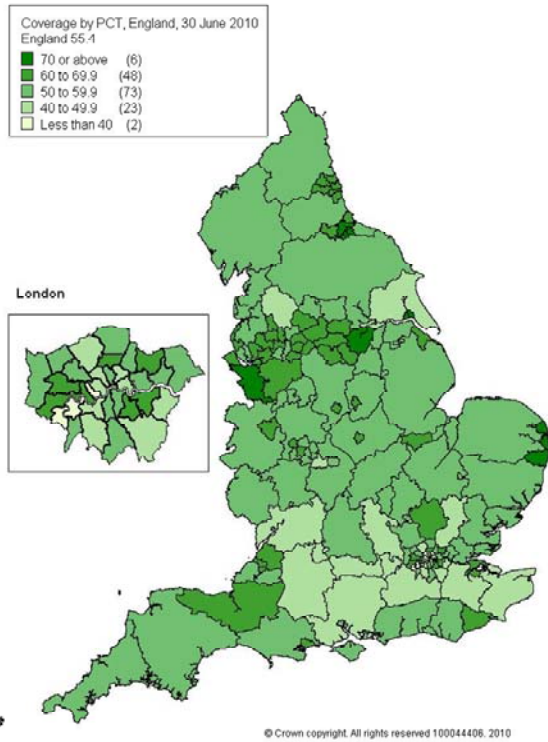


Figure 7b: NHS Dentists per 100,000 population, by Primary Care Trust (PCT), in England, 2009/10

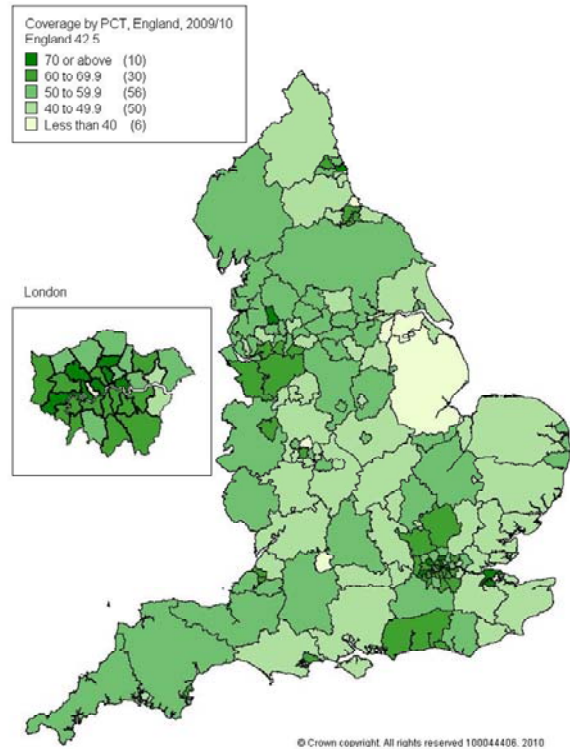


Figure 7c: Courses of Treatment per 100,000 population, by Primary Care Trust (PCT), in England, 2009/10

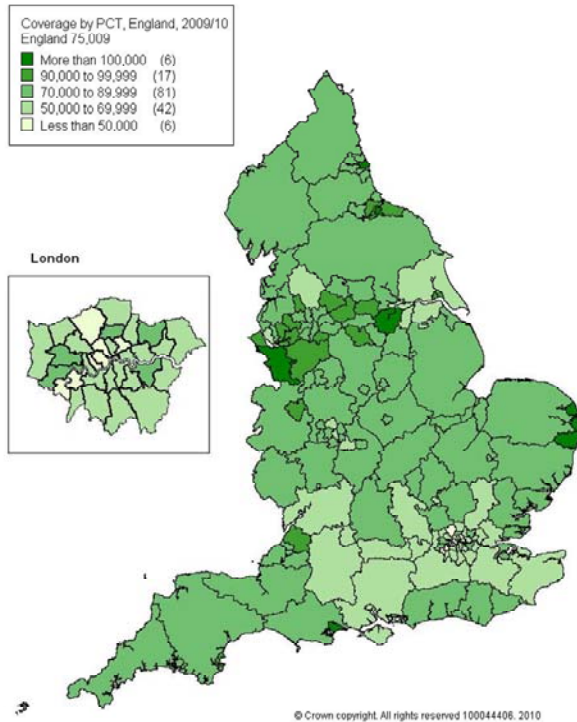
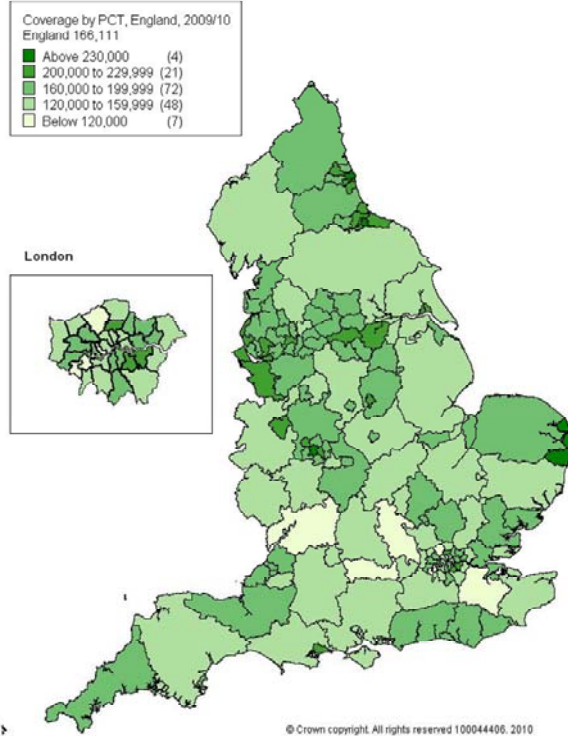


Figure 7d: Units of Dental Activity per 100,000 population, by Primary Care Trust (PCT), in England, 2009/10



List of Annexes

Annex 1 – Report tables and charts (Excel Workbook)

All tables and charts presented in this report in Excel format, plus patients seen tables by patient type at SHA level

Annex 2 – Interactive Local Level Factsheet (Excel Workbook)

2a – Primary Care Trust (PCT) level factsheet (Excel Workbook)

2b – Strategic Health Authority (SHA) level factsheet (Excel Workbook)

Annex 3 – PCT and SHA Level Data (Excel Workbook)

Main subject	Table	
	number	Title
Activity	A1	Courses of Treatment (CoTs) performed by treatment band in England, 2009/10
	A2	Percentage of CoTs performed by treatment band in England, 2009/10
	A3	CoTs performed by treatment band in England, 2008/09 to 2009/10
	A4	Number of CoTs by patient type and treatment band in England, 2009/10
	A5	Percentage of CoTs by patient type and treatment band in England, 2009/10
	A6	Number of CoTs per 100,000 population in England, 2006/07 to 2009/10
	B1	Units of Dental Activity (UDAs) performed by treatment band in England, 2009/10
	B2	Percentage of UDAs performed by treatment band in England, 2009/10
	B3	UDAs performed by treatment band in England, 2008-09 to 2009/10
	B4	Number of UDAs by patient type and treatment band in England, 2009/10
	B5	Percentage of UDAs by patient type and treatment band in England, 2009/10
	B6	Number of UDAs per 100,000 population in England, 2006/07 to 2009/10
	C1	Band 1 CoTs performed in 2006/07 and by quarter in 2007/08 to 2009/10
	C2	Band 2 CoTs performed in 2006/07 and by quarter in 2007/08 to 2009/10
	C3	Band 3 CoTs performed in 2006/07 and by quarter in 2007/08 to 2009/10
	C4	Urgent CoTs performed in 2006/07 and by quarter in 2007/08 to 2009/10
	C5	Other CoTs performed in 2006/07 and by quarter in 2007/08 to 2009/10
	C6	Total CoTs performed in 2006/07 and by quarter in 2007/08 to 2009/10
C7	Band 1 UDAs performed in 2006/07 and by quarter in 2007/08 to 2009/10	
C8	Band 2 UDAs performed in 2006/07 and by quarter in 2007/08 to 2009/10	
C9	Band 3 UDAs performed in 2006/07 and by quarter in 2007/08 to 2009/10	
C10	Urgent UDAs performed in 2006/07 and by quarter in 2007/08 to 2009/10	
C11	Other UDAs performed in 2006/07 and by quarter in 2007/08 to 2009/10	
C12	Total UDAs performed in 2006/07 and by quarter in 2007/08 to 2009/10	
D1	CoTs with domiciliary visits and sedations in England, 2008/09 and 2009/10	
D2	Unallocated FP17 forms in England, 2006/07 to 2009/10	
Patients seen	E1	Number of patients seen in the previous 24 months, by adult/child, by quarter from 31 March 2006 to 30 June 2010 (including orthodontic patients)
	E2	Patients seen in the previous 24 months as a % of the population, by adult/child, by quarter from 31 March 2006 to 30 June 2010 (including orthodontic patients)
Patient charges	F1	Patient Charges by treatment type in England, 2009/10
Workforce	G1	Number of dentists with NHS activity, population per dentist and dentists per 100,000 population in the specified years ending 31 March, England
	G2	Number of dentists with NHS activity, by contract type, in the specified years ending 31 March, England
	G3	Percentage of dentists with NHS activity, by contract type, in the specified years ending 31 March, England
	G4	Number of dentists with NHS activity, by dentist type, in the specified years ending 31 March, England
	G5	Percentage of dentists with NHS activity, by dentist type, in the specified years ending 31 March, England
	G6	Number of dentists with NHS activity, by age group and by gender, in the year ending 31 March 2007, England
	G7	Number of dentists with NHS activity, by age group and by gender, in the year ending 31 March 2008, England
	G8	Number of dentists with NHS activity, by age group and by gender, in the year ending 31 March 2009, England
	G9	Number of dentists with NHS activity, by age group and by gender, in the year ending 31 March 2010, England
Leavers and joiners	H1	Number of dentists who left and those who joined the NHS in the specified years ending 31 March
	J1	Number and percentage of dentists who left the NHS, by contract type, in the years ending 31 March 2007 to 2009
	J2	Number and percentage of dentists who left the NHS, by dentist type, in the year ending 31 March 2007 to 2009
	J3	Number and percentage of dentists who left the NHS, by gender, in the years ending 31 March 2007 to 2009
	J4	Number and percentage of dentists who left the NHS, by age group, in the years ending 31 March 2007 to 2009
	K1	Number and percentage of dentists who joined the NHS, by contract type, in the years ending 31 March 2008 to 2010
	K2	Number and percentage of dentists who joined the NHS, by dentist type, in the year ending 31 March 2008 to 2010
	K3	Number and percentage of dentists who joined the NHS, by gender, in the year ending 31 March 2008 to 2010
K4	Number and percentage of dentists who joined the NHS, by age group, in the year ending 31 March 2008 to 2010	

Annex 4 – Change rates from provisional to final quarterly data at SHA and PCT level (Excel Workbook)

Table number	Title
---------------------	--------------

<u>A</u>	Provisional and final number of Courses of Treatment (CoTs), by quarter, 2008/09 and 2009/10
<u>B</u>	Provisional and final number of Units of Dental Activity (UDAs), by quarter, 2008/09 and 2009/10

Annex 5 – Technical Information

5a – Activity

5b – Patients Seen

5c – Patient Charges

5d – Workforce

Annex 6 – source data in Excel format, suitable for analysis

A – Activity – Courses of Treatment by PCT by band, Quarter 1 2007/08 to Quarter 4 2009/10

B – Activity – Units of Dental Activity by band, Quarter 1 2007/08 to Quarter 4 2009/10

C – Patients Seen, by patient type, Quarter 4 2005/06 to Quarter 1 2010/11

Other Publications

A full list of NHS Information Centre reports produced on dentistry can be found at:
www.ic.nhs.uk/pubs/dental

A full list of NHS Information Centre reports produced on workforce can be found at:
www.ic.nhs.uk/statistics-and-data-collections/workforce/nhs-staff-numbers

The Department of Health publishes regular information on dental commissioning and progress in resolving contracts signed in dispute. Note that these data are not directly comparable with the activity statistics presented in this report. Figures are available via the link below:

www.performance.doh.gov.uk/dental_contracts/index.htm

GP patient survey: dental statistics; January to March 2010, England. For the first time, for 2009/10 Quarter 4 dental questions were included in the GP patient survey. About 400,000 adults were asked to complete questions about access to NHS dentistry in the previous 2 years. Participants in the survey were asked if they had tried to obtain an appointment with an NHS dentist and if so what was the type of appointment and had they been successful. Patients who hadn't tried to obtain an NHS dentist in the previous 2 years were asked to select one reason why they hadn't tried.

http://www.dh.gov.uk/en/Publicationsandstatistics/Publications/PublicationsStatistics/DH_116964

For information on other data related to the dental sector, please see our Beginner's Guide to Dental Data at www.ic.nhs.uk/pubs/dental

**Published by The NHS Information Centre for health and social care
Part of the Government Statistical Service**

ISBN 978-1-84636-439-6

This publication may be requested in large print or other formats.

Responsible Statistician:

Phil Cooke
Section Head

For further information:

www.ic.nhs.uk

0845 300 6016

enquiries@ic.nhs.uk

Copyright © 2010, The Health and Social Care Information Centre, Dental and Eye Care Team. All rights reserved.

This work remains the sole and exclusive property of the Health and Social Care Information Centre and may only be reproduced where there is explicit reference to the ownership of the Health and Social Care Information Centre.

This work may be re-used by NHS and government organisations without permission.

This work is subject to the Re-Use of Public Sector Information Regulations and permission for commercial use must be obtained from the copyright holder.