

NHS

**The
Information
Centre**

for health and social care

iView Prescribing User Guide

April 2009

The NHS Information Centre is England's central, authoritative source of health and social care information. Acting as a 'one-stop-shop' for high quality, national, comparative data, we deliver information for local decision makers, to improve the quality and efficiency of care.

Copyright © 2009, Health and Social Care Information Centre, Prescribing Support and Primary Care Services. All rights reserved.

This work remains the sole and exclusive property of the Health and Social Care Information Centre and may only be reproduced where there is explicit reference to the ownership of the Health and Social Care Information Centre.

This work may be re-used by NHS and government organisations without permission.

This work is subject to the Re-Use of Public Sector Information Regulations and permission for commercial use must be obtained from the copyright holder.

Contents

1 Introduction	4
2 Accessing the System	7
3 Building a Sample Report	11
4 Exporting Data	16
5 The Customising Icons	18
6 References	19
Appendix A: Errors in NHS Prescription Services Data	20
Appendix B: List of BNF sections	23

1 INTRODUCTION

1.1 Purpose

This document provides guidance on using iView Prescribing. It provides information to get a new user started, rather than attempting to explain every possible report combination.

1.2 Background

iView Prescribing is a data domain within the NHS IC's reporting environment called iView.

iView enables registered users to make selections, view comparisons, create tables, generate graphs, generate their own reports and extract data from the authoritative source of information. It is an important means by which the NHS Information Centre makes aggregated data available to the health and social care community. It has a flexible graphical interface, is accessible via the web and is free at point of use. It encompasses:

- Fast navigation around screens and sub screens for experienced users;
- Intuitive or explanatory navigation for inexperienced users;
- Help facilities within the reporting tool;
- Granular security to ensure that users who are authorised to access Prescribing data will not be able to access the other data domains available in iView.

iView Prescribing is a method by which prescribing data (provided by Prescription Services of the NHS Business Services Authority) is made available to the NHS and others. It was developed by the Information Centre for Health and Social Care (IC), in conjunction with key partners. Users can make selections, view comparisons, create tables, generate graphs and extract data from the prescribing data.

The IC has access to the prescribing data via a system called ePACT, which is populated monthly with data extracts from NHS Prescription Services' databases. The data is extracted by the IC each quarter and added to iView Prescribing.

All client PCs running Internet Explorer 6 and above over a broadband or better link will be able to access the reporting tool. Other browsers may be used, though minor visual defaults may result.

1.3 Access

Users accessing iView Prescribing will require a username and password to logon. However you can create your own username and password and will then be able to access the system without any further formalities. For details see section 2.

1.4 Data structure and Content

The data within IView Prescribing contains details of prescribing by each Primary Care Trust (PCT) in England for each section of the British National Formulary for each quarter of the year. The data is taken from the ePACT system provided by NHS Prescription Services, part of the NHS Business Services Authority. The system covers prescriptions prescribed by GPs, nurses, pharmacists and others in England and dispensed in the community in the UK. For data at PCT level, prescriptions written by a prescriber located in a particular PCT but dispensed outside that PCT will be included in the data for the PCT in which the prescriber is based. Prescriptions written in England but dispensed outside England are included. Prescriptions written in hospitals/clinics that are dispensed in the community, prescriptions dispensed in hospitals, dental prescribing and private prescriptions are not included in PACT data. It is important to note this as some BNF sections have a high proportion of prescriptions written in hospitals that are dispensed in the community.

The data has four main measures. These are

- Number of items
- Net Ingredient Cost
- Actual Cost
- Number of records

A prescription form may specify several medicines. For example, a patient may be prescribed a diuretic, an analgesic and hypertension medicine on a single prescription form. Each of these is counted as one item and so, in this case, one form would produce three items

The Net Ingredient Cost of an item is the cost calculated using the prices in Part VIII of the Drug Tariff or, if the medicine does not appear in the Drug Tariff, the manufacturer's price list.

The Actual Cost of an item is calculated using the formula

$$\text{Actual Cost} = \text{Net Ingredient Cost} + \text{Container Allowance} - \text{Assumed Average Discount}$$

The container allowance is a payment to the dispenser. The Department of Health requires NHS Prescription Services (formerly the Prescription Pricing Division) of the NHS Business Services Authority to apply a discount to payments to dispensers (pharmacists, appliance contractors and doctors) to reflect the common practice of wholesalers of offering a discount when supplying medicines. The average discount is calculated from prescribing in the previous month.

The number of records simply counts how many records are included in a total. For example, if the system displays a sum for a Primary Care Trust for a single quarter then the count of records tells you how many sections have been used by prescribers in that PCT in that quarter.

Note that PCTs vary considerably in size from under 100,000 patients to over one million patients. Similarly the proportion of patients aged 65 and over (whose need for medication is usually higher than for younger patients) varies from 6.7% to

23.9%. Some PCTs commission specific care services from secondary care (whose prescribing does not appear in these figures) which, in other PCTs, is provided through primary care. Users must not assume that differences in prescribing patterns for different PCTs imply variation in the level of services or quality of patient care.

If you wish to adjust the prescribing data by the number of patients there are two sources of such information. The number of registered patients in a PCT can be obtained from the QOF prevalence tables published by the NHS Information Centre. The figures for 2007/08 can be found at

<http://www.ic.nhs.uk/statistics-and-data-collections/supporting-information/audits-and-performance/the-quality-and-outcomes-framework/qof-2007/08/data-tables>

Alternatively you can use the estimates of resident populations published by National Statistics which are available from

<http://www.statistics.gov.uk/statbase/Product.asp?vlnk=15106>

The data in iView prescribing is produced by the Prescription Services division of the NHS Business Services Authority. Terms and Conditions for the use of this data including an application form for re-use and details of how the Information Centre should be cited when these figures are used can be found on the Information Centre website at

<http://www.ic.nhs.uk/data-protection/re-use-of-data-and-citation>

Your attention is drawn to known problems with the data issued by NHS Prescription Services. See Appendix A of this user guide for more details.

1.5 Support

The first point for user support will be provided by the IC contact centre. They can be contacted by phoning 0845 300 6016 or by emailing enquiries@ic.nhs.uk.

You can also contact the IC for support and information by clicking on 'Contact us', which is shown at the top of each screen.

Enquiries may then be passed to the responsible IC team, if they relate to the system, or to the relevant expert on the indicator data, if they are data related. Guidance notes and updated information will be made available on the web site.

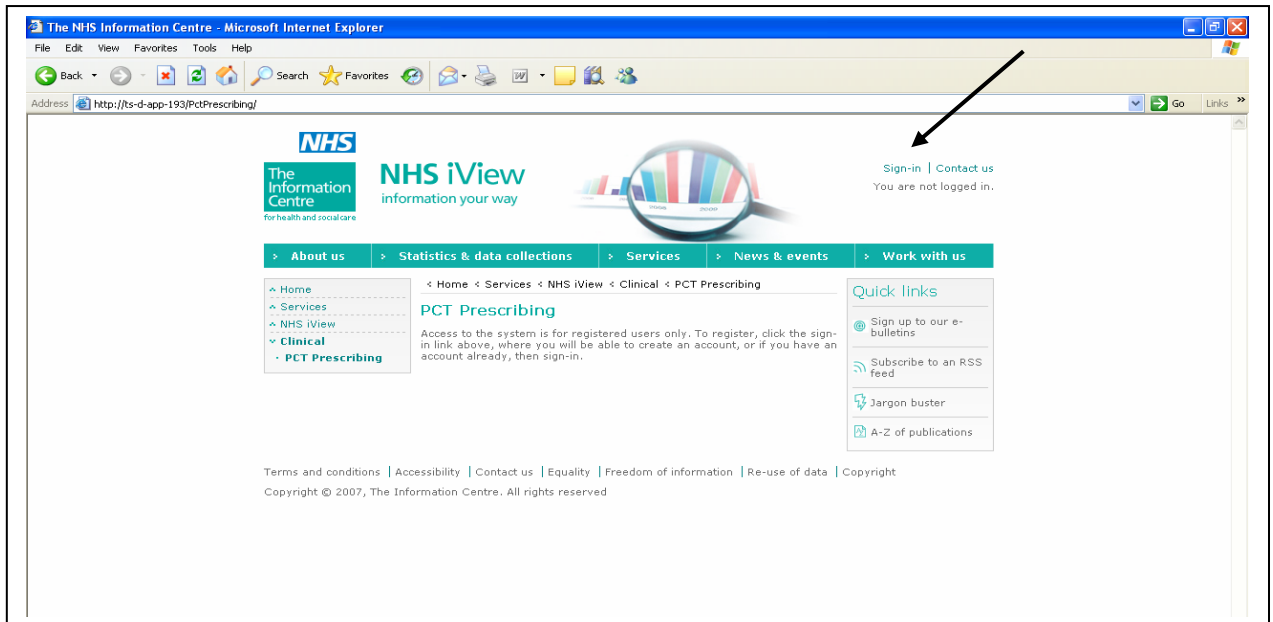
The '**Important Documents**' tab may answer your support questions. This tab is on the screen below the list of measures and dimensions and it provides access to important information about the system and the data being used. It includes this user guide and other documents may be added in the future. Adobe Reader is required to view these documents.

2 ACCESSING THE SYSTEM

Use the following URL to access the initial screen:

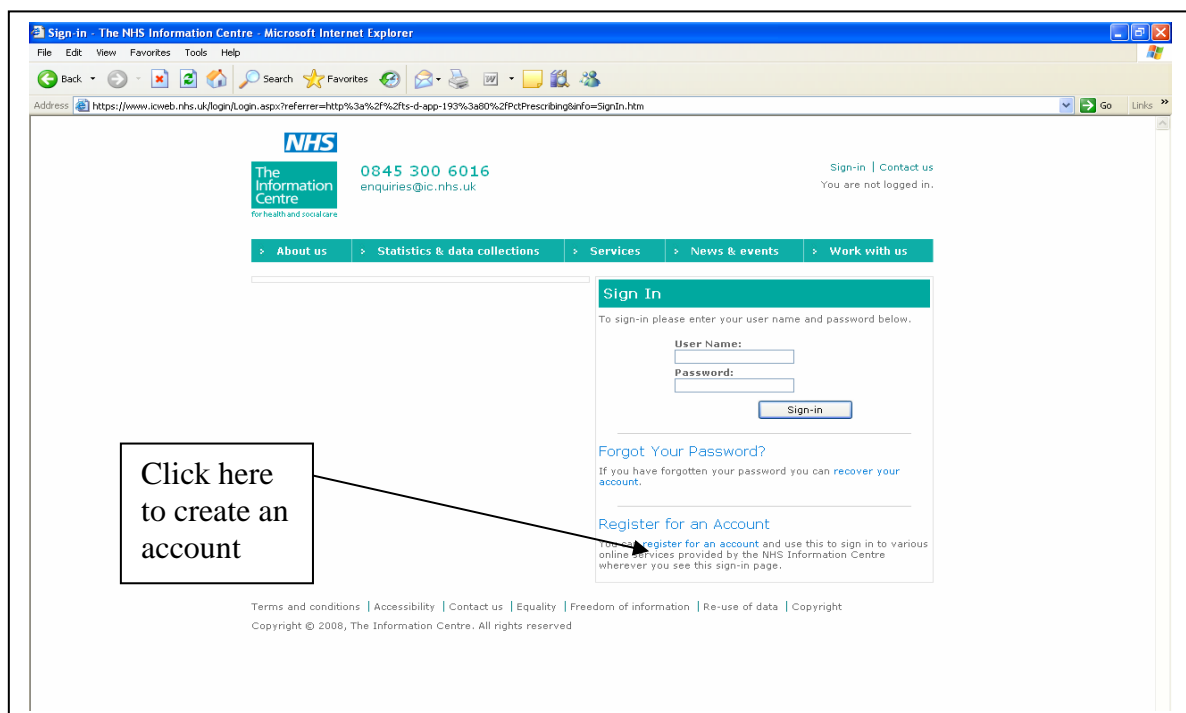
<http://www.icweb.nhs.uk/pctprescribing>

The screen tells you that you are entering the PCT Prescribing domain and invites you to sign in (to the right of the iView logo).



2.2 The Sign-in screen

If you click on Sign-in then you see the following screen.



If you have previously set up an account then enter the username and password. If not

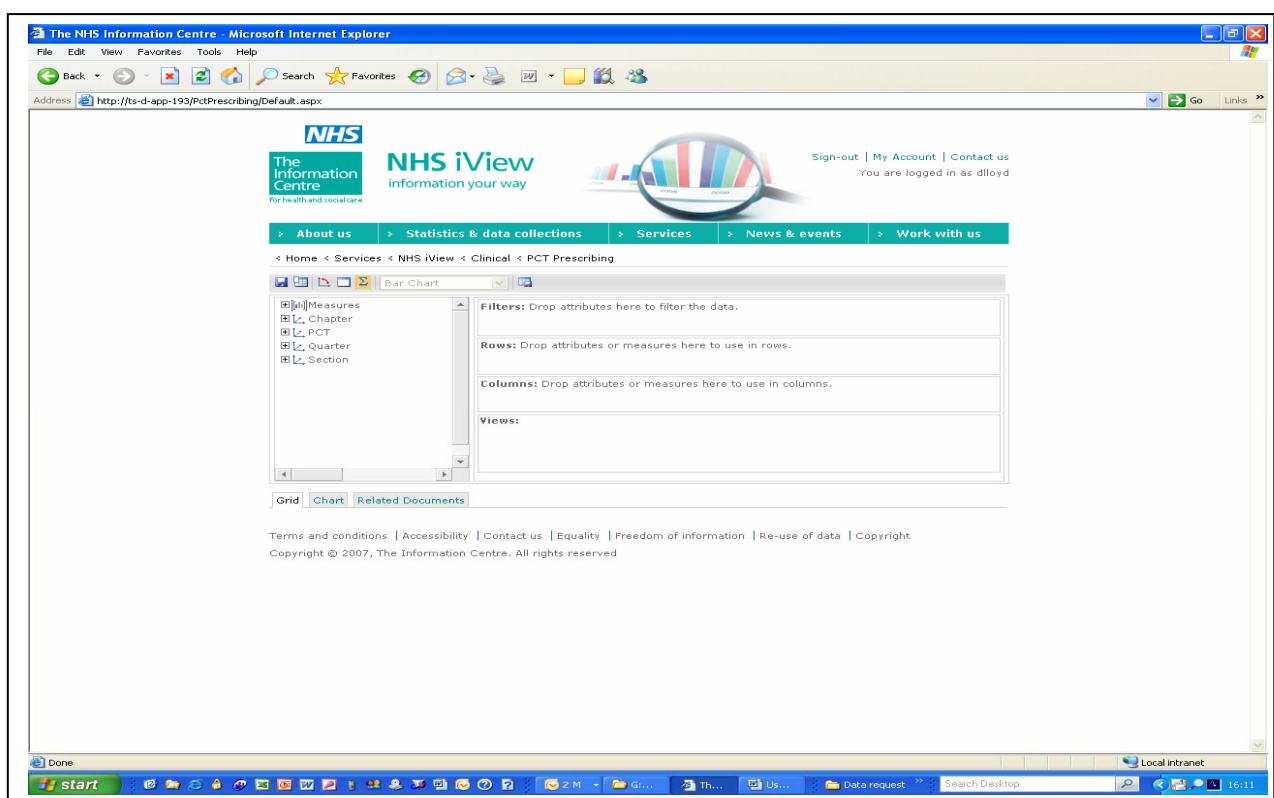
then click on “register for an account” and enter your details.

Once you have signed in you will see the main screen.

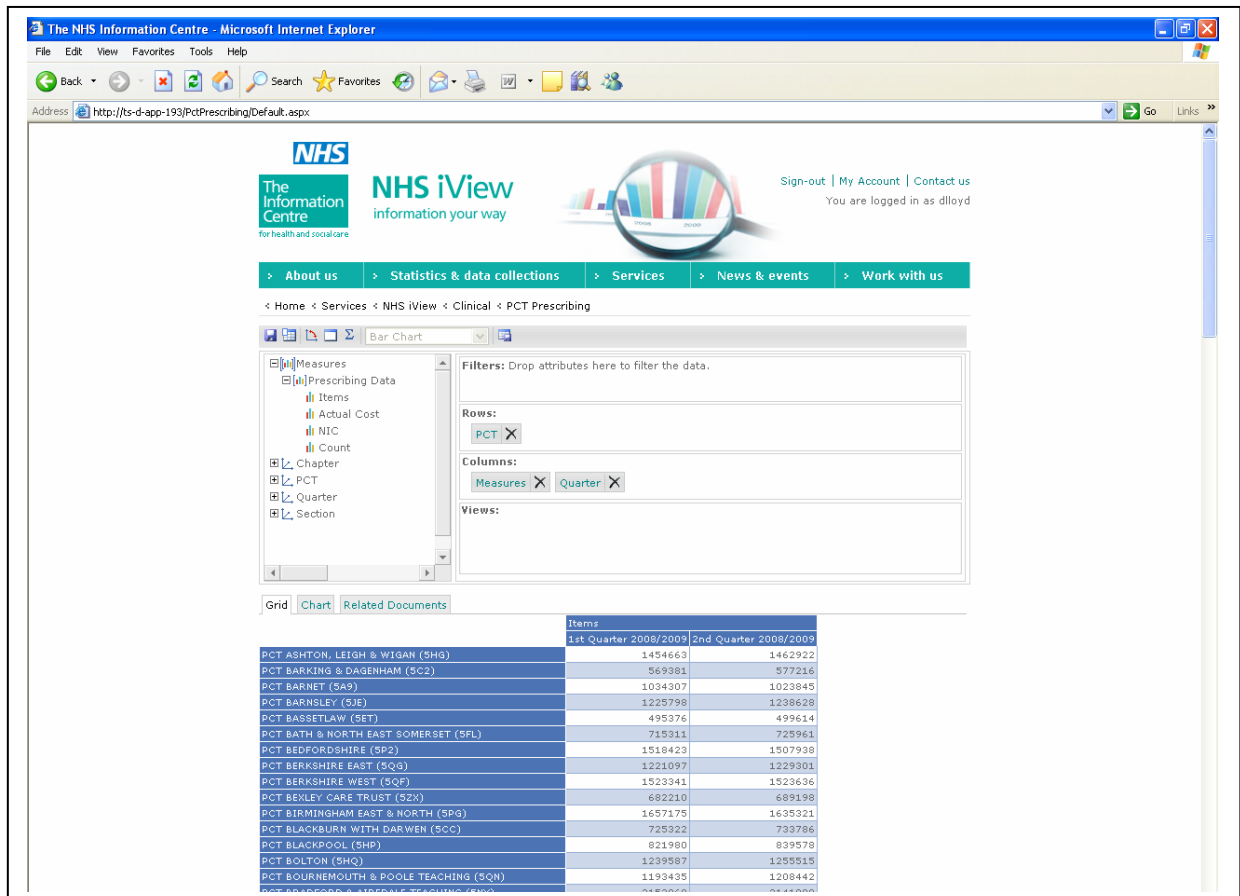
2.3 The Main Screen

The following is a picture of the opening main screen. There are two sections to the screen:

- The top section is the Work. It enables the user to build reports by selecting Measures and Dimensions from the left and ‘dragging and dropping’ them onto the ‘Filter’, ‘Rows’ and ‘Columns’ areas on the right.
- The bottom section is where the resulting grids (i.e. tables of data) and charts (i.e. graphical representations) are displayed.



The example screen below shows total items for first and second quarters of 2008/09 by PCT.



Standard reports can be created by clicking on “Save the Current View”. Views that you have previously created will be listed in the Views box.

The ‘+’ symbol against items shows that you can drill down to lower levels of detail for selection. These are shown against measures and dimensions in the Work Area and also against items on grids and charts in the lower part of the screen.

Similarly, the down arrow symbol (▼) against selected measures and dimensions on the right side shows that a drop down list can be accessed to select particular values for the dimension (e.g. particular organisations).

2.4 Rows, Columns and Filters

- **Rows** define the values in the rows of a grid and these values are displayed on the horizontal axis of charts.
- **Columns** define the values in the columns of a grid.
- **Filters** define the scope of the values to be included (e.g. you could specify only data from the Cardiovascular chapter”)

If you are building a report it is a good idea to define any filters first. This means that the report will be displayed more quickly once you define the other fields or make any

changes as there will be less than the total data used.

2.5 Measures and Dimensions

The list of **Measures** is

- Items
- Actual Cost
- Net Ingredient Cost
- Count (the number of records used in the analysis)

These are defined in section 1.4

The **Dimensions** are

- Chapter (i.e. chapter of the British National Formulary as extended by NHS Prescription Services); the chapters are displayed in alphabetical order with the number of the chapter in parentheses, e.g. Eye (11).
- PCT (Primary Care Trust)
- Quarter (data starts in the quarter April to May 2008)
- Section (i.e. section of the British National Formulary as extended by NHS Prescription Services); the sections are displayed in alphabetical order with the section number in parentheses, e.g. Cough Preparations (3.09)

From time to time the British National Formulary re-classifies drugs. For example, irrigation fluids have moved from section 13.11 to 21.16. The data in iView will show the chapter and section applicable at the time the data was extracted. However data provided by NHS Prescription Services at a later date will reflect the latest BNF classification.

A list of the sections is in Appendix B.

2.6 Changing Passwords

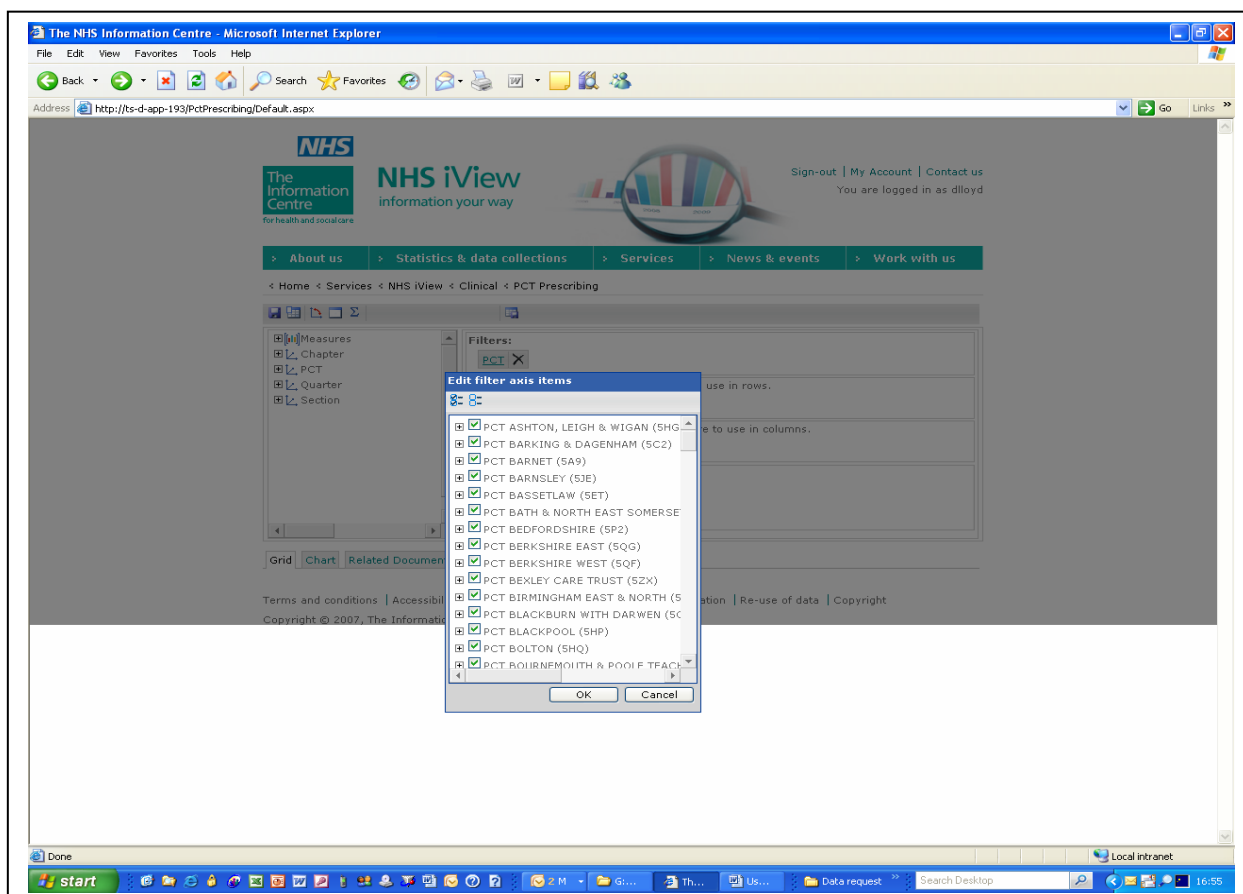
If you subsequently want to change your password you can do so by clicking on My Account at the top of the screen. You will be asked to enter your username and password again as a security check. Once you have done this you can edit details of your account including your username and password.

3 BUILDING A SAMPLE REPORT

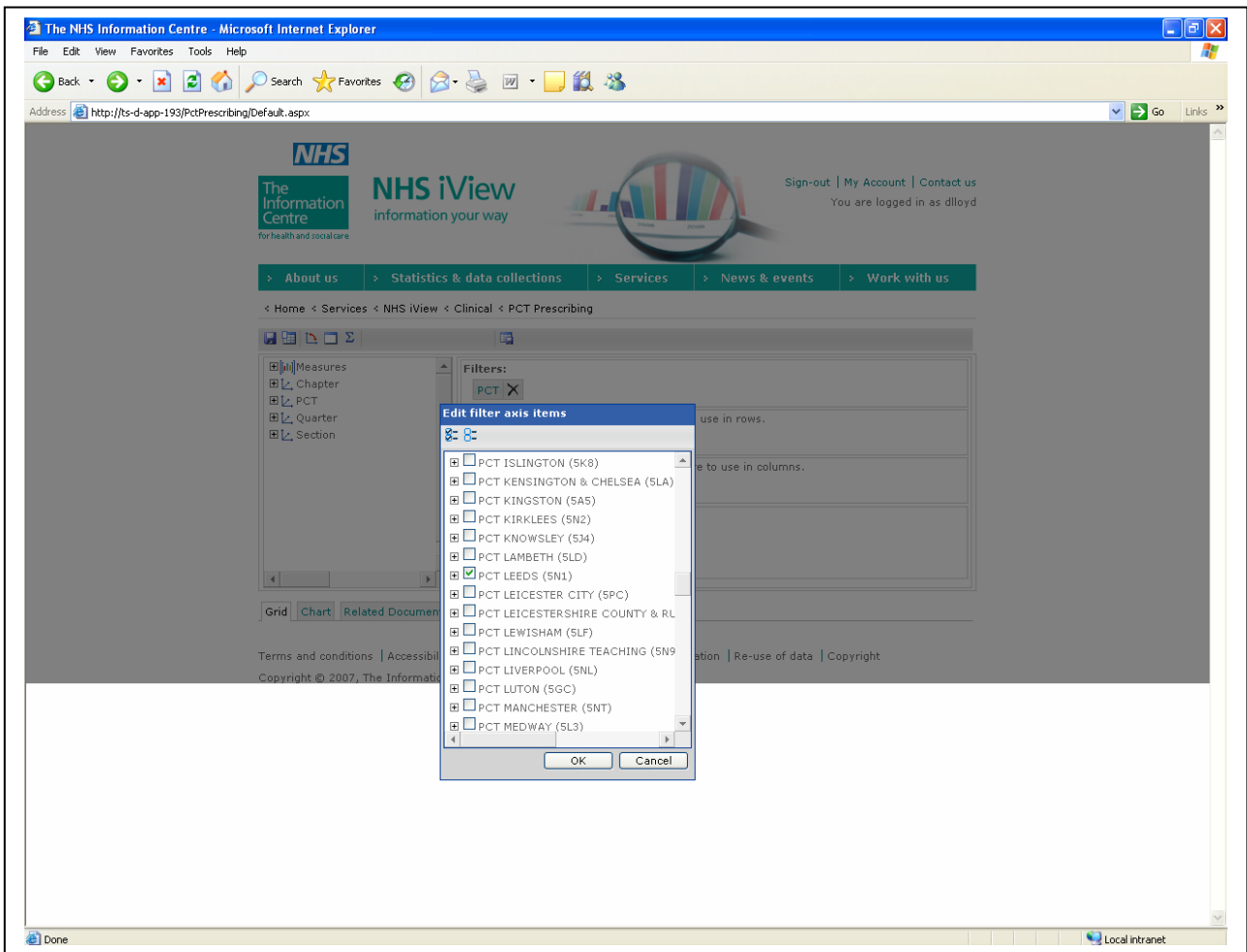
3.1 Selecting Rows & Columns and applying filters

To define a report (e.g. number of items by chapter for Leeds PCT by quarter):

- Left click on PCT and drag it to the section marked Filter and drop it into the Filter area
- Left click on the word PCT and a selection window will appear



- Initially all the PCTs will be selected (a tick appears in the box next to each one). Left Click on the icon with the two empty boxes to clear all the selections. The icon with the two boxes with ticks in them selects all the PCTs. These icons work the same way for all the dimensions.
- Scroll down the list until you find the PCT you require, in this case Leeds. Left click on the box next to it to select it. A tick will appear in the box.



Click on OK to confirm the selection and close the box. Having limited the analysis to Leeds you can now define the rows and columns.

- Drag the Chapter dimension to Rows.
- Click on the + next to Measures to expand the list
- Click on the + next to Prescribing Data to expand the list
- Click on Items and drag it to the Columns section of the screen

This produces the following report which is for all quarters held in the database.

The screenshot shows the NHS iView interface in Microsoft Internet Explorer. The address bar displays `http://ts-d-app-193/PctPrescribing/Default.aspx`. The page header includes the NHS logo and 'NHS iView information your way'. A navigation menu contains 'About us', 'Statistics & data collections', 'Services', 'News & events', and 'Work with us'. The breadcrumb trail is 'Home > Services > NHS iView > Clinical > PCT Prescribing'. The main content area features a 'Bar Chart' view. On the left, a tree view shows 'Measures' expanded to 'Prescribing Data', with 'Items', 'Actual Cost', 'NIC', and 'Count' visible. The 'Filters' section on the right has 'PCT' selected. The 'Columns' section has 'Measures' selected. Below the chart, a table is displayed with the following data:

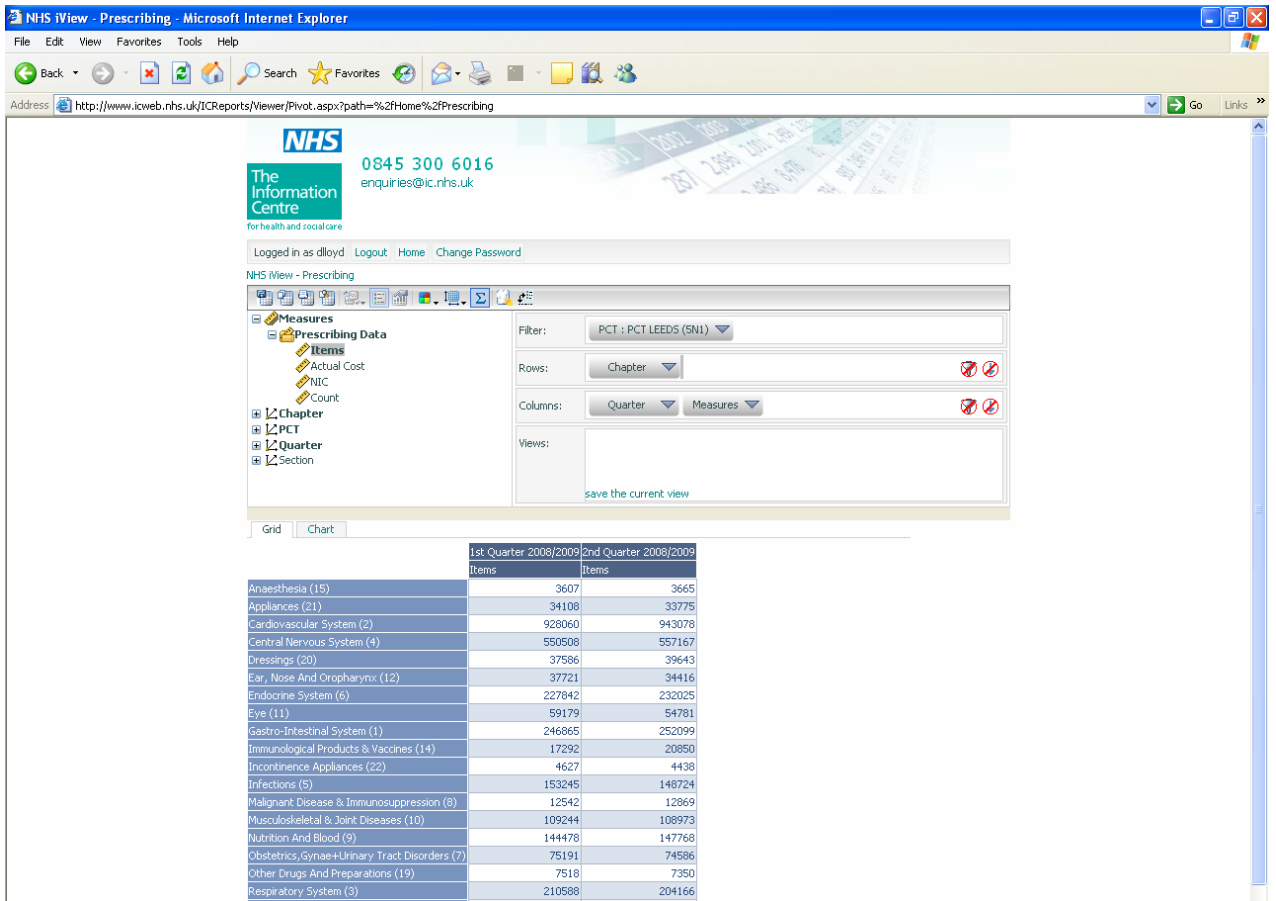
	Items
Anaesthesia (15)	7272
Appliances (21)	67883
Cardiovascular System (2)	1871138
Central Nervous System (4)	1107675
Dressings (20)	77229
Ear, Nose And Oropharynx (12)	72137
Endocrine System (6)	459867
Eye (11)	113960

If you wish to display the Actual Cost instead then click on the word Measures in the Columns section, click to de-select Items and click to select Actual Cost.

If you wish to restrict the report to a particular time period then drag Quarter to the filter section, click on the word Quarter and select the required quarters in the same way as the PCT was selected (see above). The result is shown below.

The screenshot shows the NHS iView interface with updated filters. The 'Filters' section now includes both 'PCT' and 'Quarter'. The 'Columns' section still has 'Measures' selected. The table below shows the resulting data:

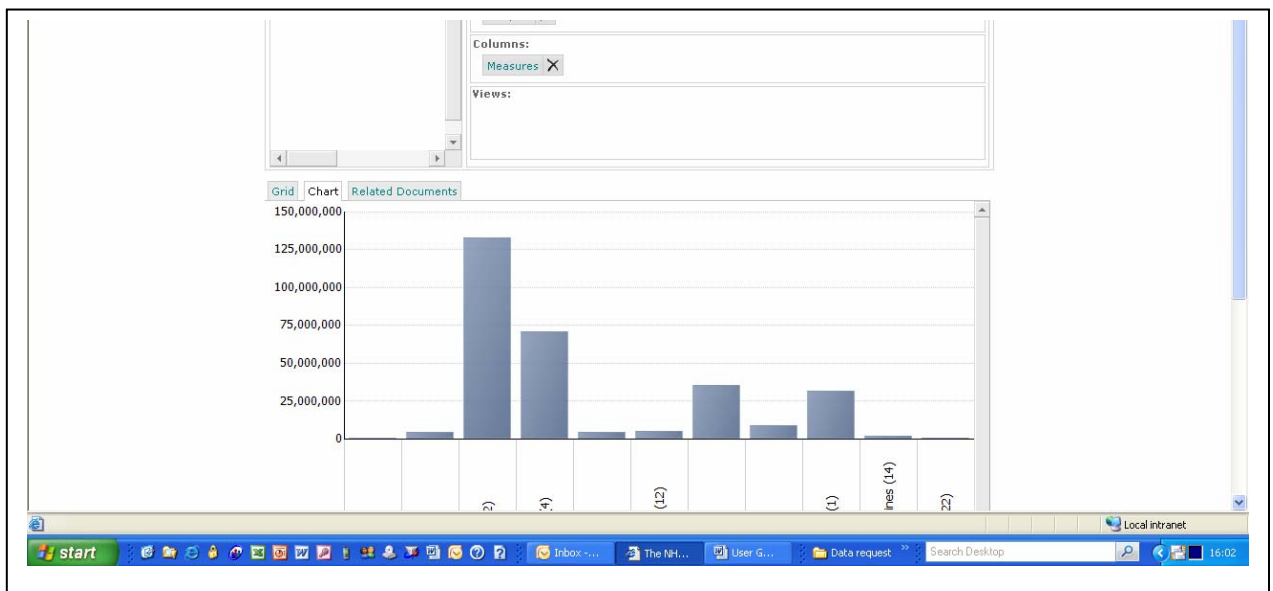
	Items
Anaesthesia (15)	272594
Appliances (21)	2406831
Cardiovascular System (2)	67038304
Central Nervous System (4)	35745940
Dressings (20)	2453983
Ear, Nose And Oropharynx (12)	2453896
Endocrine System (6)	18198613
Eye (11)	4317700
Gastro-Intestinal System (1)	16098518
Immunological Products & Vaccines (14)	1337489
Incontinence Appliances (22)	373099
Infections (5)	9296581
Malignant Disease & Immunosuppression (8)	907060
Musculoskeletal & Joint Diseases (10)	7342966
Nutrition And Blood (9)	9065119
Obstetrics,Gynae+Urinary Tract Disorders (7)	4873123
Other Drugs And Preparations (19)	471914
Preparations used in Diagnosis (18)	6



To remove a dimension or measure from the definition of an analysis, click on the X next to the name.

3.2 Changing between Grid and Chart views

To change the view from grid (table) to a chart (graphical), click on the 'Chart' tab which appears below the list of measures and dimensions. There is an example below.




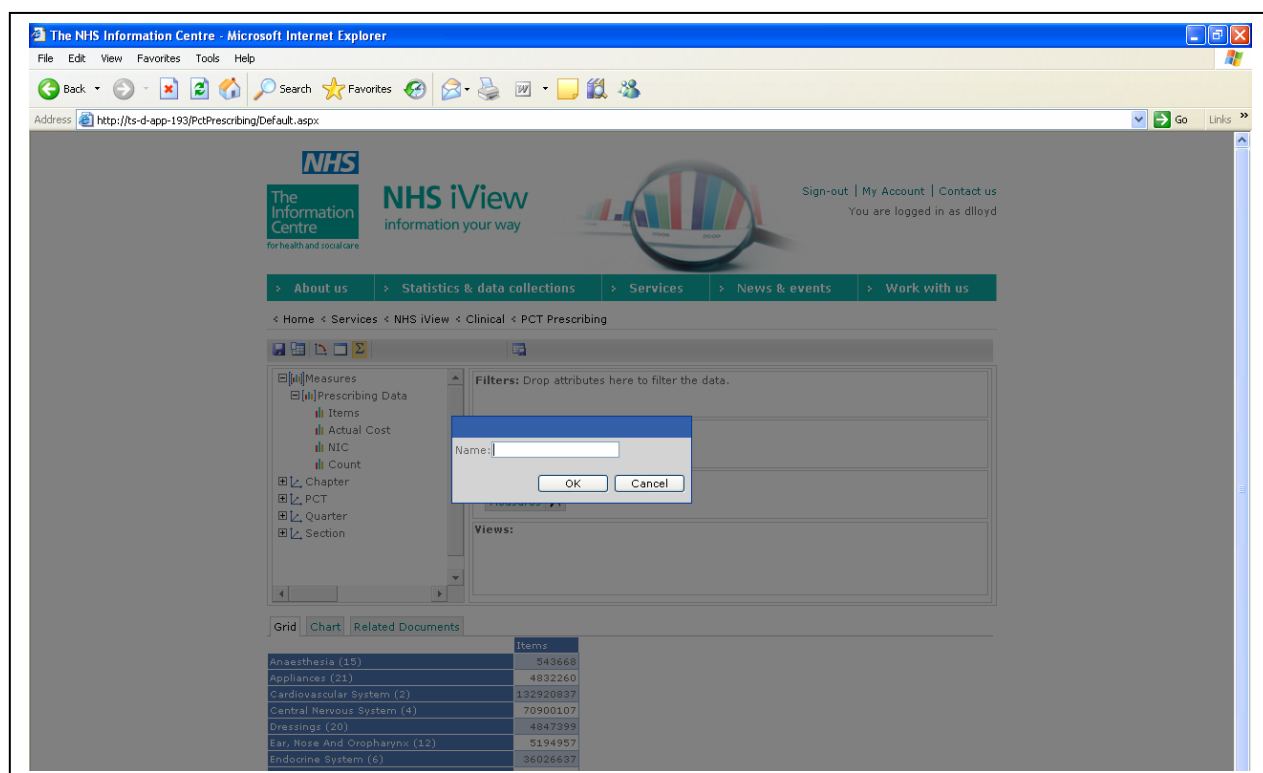
There are currently three different charts available, a bar chart (the default), a stacked bar chart and a line chart. To choose a particular chart, click on the drop down menu above the list of measures. It is planned to add other sorts of charts to the system in the future.

If a graph is very wide or deep then it may not be possible to display the complete graph on the screen. You will need to use the sliders at the bottom and side to move your view of the graph.

Currently you can only graph one measure at a time. Later releases will extend this.

3.3 Save the current View for future use

Having defined a report you might want to save it so that you can run it again later. To do this, click on 'Save the current view' () in the set of icons above the list of measures. A box appears and you need to type in a name for the view and click on OK.



To open a previously saved view, click on the name of the view. The list of saved views appears in the Views panel. To remove a previously saved view, click on the word delete next to the name of the view.

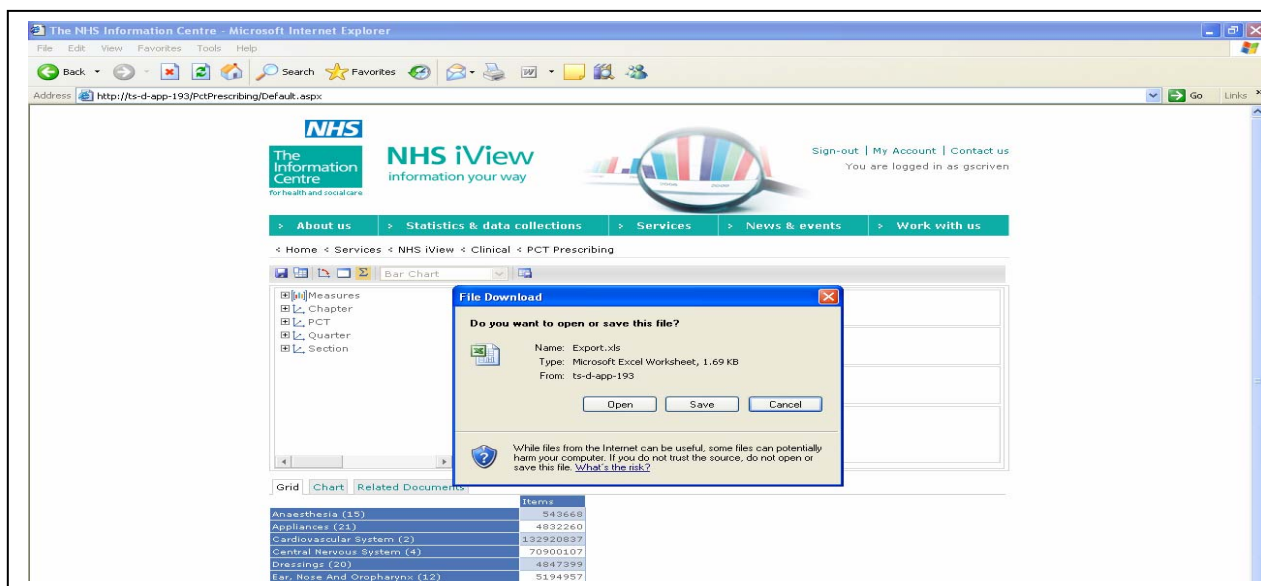
3.4 Printing a table or graph

Currently there is no way of printing tables or graphs other than printing via Internet Explorer or saving the screen shot and then putting it into a document which you can print. Note that this will only show what is actually on the screen at the moment, not the full table of graph.

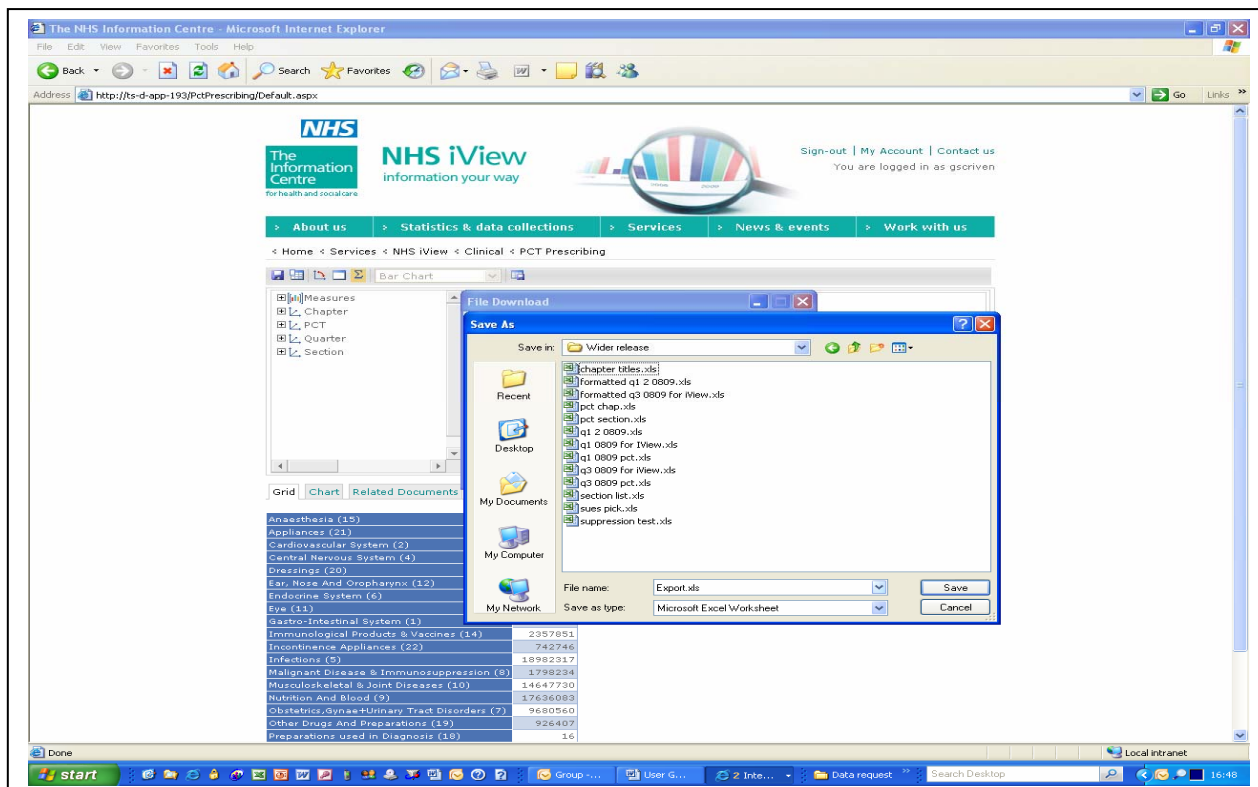
4 EXPORTING DATA

Data in the views (i.e. charts and grids) can be exported as an Excel spreadsheet or copied to the clipboard and pasted into a number of other packages, including Word and PowerPoint.

To export an entire grid to Excel for further analysis, click on the 'Save the current view to disk' which is the first icon on the toolbar. A window opens asking you whether you wish to save the file.



Click on "Save " and another window opens.




You can navigate around your system to decide where you wish to save the file. You can also type in a name for the file (the default is Export.xls).


An alternative way of copying the data is to use the icon to the right of the one which copies the data to an Excel spreadsheet. This copies the data in the current view to the clipboard from where you can paste it into Excel.

5 THE CUSTOMISING ICONS


5.2 Grid Total On Or Off

If you click on the “Pivots the current view” icon () then the columns become rows and *vice versa*.

5.2 Grid Total On Or Off

This icon () will remove or insert totals on a grid.

5.3 Clearing the current Grid

If you want to clear the current report definitions and start again, then click on the “Clears the current View” icon ()

6 References

The following publications provide more information on the data in IView Prescribing.

British National Formulary, published jointly by BMJ Group, Tavistock Square, London WC1H 9JP and RPS Publishing, the wholly owned publishing organisation of the Royal Pharmaceutical Society of Great Britain, 1 Lambeth High Street, London, SE1 7JN, ISBN 978 0 085369 778 7

Drug Tariff, compiled by NHS Prescription Services, NHS Business Service Authority on behalf of the Department of Health, published by TSO, London, ISBN 978-0-11-783322-7

Appendix A: Errors in NHS Prescription Services Data

NHS Prescription Services (formerly the Prescription Pricing Division) of the NHS Business Services Authority have notified the NHS and the NHS Information Centre about incorrect data for some products in their information systems. This follows the introduction of new technology and procedures to improve the capture of information from NHS prescriptions. During the earlier stages of implementation, up until August 2008, data on a few products captured within the information systems were captured incorrectly from some prescription forms.

Incorrect data has been captured for a few products between late 2007 and early 2008. Data for July 2008 (maximum 0.02% of total items) and August 2008 (maximum 0.04% of total items) will also show some of the affected products incorrectly. Data processed for the months after August 2008 is not affected. Whereas payments to dispensing contractors can be corrected by the NHS Prescription Services, it is not possible to correct errors in historical information in the reports and information systems already published.

Data provided to the NHS Information Centre will therefore contain these errors. We are unable to estimate the extent of the errors for individual products. NHS Prescription Services assure us that the value and the number of items affected is small compared with the 70 million prescription items and £650 million of payments processed each month. However, due to the high level of detail provided in these information systems, it should be borne in mind that there may be a disproportionate error rate when scrutinising prescribing or dispensing of individual products or localised prescribing or dispensing information

Details of the products involved are given in the tables below.

1) Controlled Drugs

Table 1 indicates that some items for the prescribed products listed were recorded in the data as the items shown.

Table 1

Prescribed Product	Product as recorded in data
Codeine Phosphate Linctus	Codeine phosphate powder
Metoclopramide 10mg solution for injection	Methadose 10mg/ml oral concentrate
Morphine sulphate Tablets M/R OR Morphine sulphate Oral solution	Morphine sulphate powder

Table 2 details in which month data may have been affected for each product. A **tick** means the data *may have been* affected. A blank cell means the data was *unaffected*.

Table 2

2008 (Months)	Jan	Feb	Mar	Apr	May	Jun	Jul	Aug	Sep	Oct	Nov	Dec
Product												
Codeine phosphate powder	✓						✓					
Methadose 10mg/ml oral concentrate	✓	✓	✓				✓					
Morphine sulphate powder	✓						✓					

2) Other products.

Table 3 indicates that some items for the prescribed products listed were recorded in the data as the items shown.

Table 3

Prescribed Product	Product as recorded in data
Beclometasone Inhaler	Beclometasone 100 Cyclocaps
Beclometasone Inhaler	Beclometasone 200 Cyclocaps
Beclometasone Inhaler	Beclometasone 400 Cyclocaps
Budesonide Inhaler	Budesonide 200 Cyclocaps
Budesonide Inhaler	Budesonide 400 Cyclocaps
Budesonide Inhaler	Budesonide 200microgram inhalation powder capsules
Budesonide Inhaler	Budesonide 400microgram inhalation powder capsules
Carbomer 980 Gel 0.2%	Carbomer 974P 0.25% eye gel
Light liquid paraffin Bath Additive	Night Nurse oral solution
No specific product	Peppermint oil liquid
Salbutamol Inhaler	Salbutamol 200 Cyclocaps
Salbutamol Inhaler	Salbutamol 400 Cyclocaps
No specific product	Seven Seas JointCare MAX capsules and tablets
Viscotears Liq Eye Drop Gel 0.2%	Viscotears 0.2% eye gel 0.6ml unit dose

Table 4 details in which month data may have been affected for each product. A **tick** means the data *may have been* affected. A blank cell means the data was *unaffected*.

Table 4

2008 (Months)	Jan	Feb	Mar	Apr	May	Jun	Jul	Aug	Sep	Oct	Nov	Dec
Product												
Beclometasone 100 Cyclocaps	✓						✓	✓				
Beclometasone 200 Cyclocaps	✓						✓	✓				
Beclometasone 400 Cyclocaps	✓						✓	✓				
Budesonide 200 Cyclocaps	✓						✓	✓				
Budesonide 400 Cyclocaps	✓						✓	✓				
Budesonide 200microgram inhalation powder capsules	✓	✓	✓	✓			✓	✓				
Budesonide 400microgram inhalation powder capsules	✓	✓	✓	✓			✓	✓				
Carbomer 974P 0.25% eye gel	✓						✓	✓				
Night Nurse oral solution	✓						✓	✓				
Peppermint oil liquid	✓	✓	✓				✓	✓				
Salbutamol 200 Cyclocaps	✓						✓	✓				
Salbutamol 400 Cyclocaps	✓						✓	✓				
Seven Seas JointCare MAX capsules and tablets	✓	✓	✓	✓	✓	✓	✓	✓				
Viscotears 0.2% eye gel 0.6ml unit dose	✓						✓	✓				

NHS Prescription Services have instigated corrective action to improve data collection and continues to closely monitor the quality of Information provided to NHS staff and the wider NHS community.

If you have any further queries on the impact of these errors please do not hesitate to contact the NHS Prescription Services helpdesk on 0845 610 1171 or by email at prescriptionpricinghelpdesk@ppa.nhs.uk.

Appendix B: List of BNF sections

The following is a list of the sections appearing in the prescribing data for the quarter October to December 2008 ordered by BNF chapter and section number. Note that this list includes additions made by NHS Prescription Services, see the Business Services Authority website for details,

http://www.nhsbsa.nhs.uk/PrescriptionServices/Documents/BNF_Classification_Booklet_2008.pdf

Chapter	Section	BNF Name
1	01	Dyspep&Gastro-Oesophageal Reflux Disease
1	02	Antispasmod.&Other Drgs Alt.Gut Motility
1	03	Antisecretory Drugs+Mucosal Protectants
1	04	Acute Diarrhoea
1	05	Chronic Bowel Disorders
1	06	Laxatives
1	07	Local Prepn for Anal & Rectal Disorders
1	08	Stoma Care
1	09	Drugs Affecting Intestinal Secretions
2	01	Positive Inotropic Drugs
2	02	Diuretics
2	03	Anti-Arrhythmic Drugs
2	04	Beta-Adrenoceptor Blocking Drugs
2	05	Hypertension and Heart Failure
2	06	Nit,Calc Block & Other Antianginal Drugs
2	07	Sympathomimetics
2	08	Anticoagulants And Protamine
2	09	Antiplatelet Drugs
2	11	Antifibrinolytic Drugs & Haemostatics
2	12	Lipid-Regulating Drugs
2	13	Local Sclerosants
3	01	Bronchodilators
3	02	Corticosteroids (Respiratory)
3	03	Cromoglycate,Rel,Leukotriene Antagonists
3	04	Antihist, Hyposensit & Allergic Emergen
3	06	Oxygen
3	07	Mucolytics
3	08	Aromatic Inhalations
3	09	Cough Preparations
3	10	Systemic Nasal Decongestants
4	01	Hypnotics And Anxiolytics
4	02	Drugs Used In Psychoses & Rel.Disorders
4	03	Antidepressant Drugs
4	04	CNS Stimulants and drugs used for ADHD
4	05	Drugs used in the Treatment of Obesity
4	06	Drugs Used In Nausea And Vertigo
4	07	Analgesics
4	08	Antiepileptics
4	09	Drugs Used In Park'ism/Related Disorders
4	10	Drugs Used In Substance Dependence
4	11	Drugs for Dementia
5	01	Antibacterial Drugs
5	02	Antifungal Drugs
5	03	Antiviral Drugs
5	04	Antiprotozoal Drugs

5	05	Anthelmintics
6	01	Drugs Used In Diabetes
6	02	Thyroid And Antithyroid Drugs
6	03	Corticosteroids (Endocrine)
6	04	Sex Hormones
6	05	Hypothalamic&Pituitary Hormones&Antioest
6	06	Drugs Affecting Bone Metabolism
6	07	Other Endocrine Drugs
7	01	Drugs Used In Obstetrics
7	02	Treatment Of Vaginal & Vulval Conditions
7	03	Contraceptives
7	04	Drugs For Genito-Urinary Disorders
8	01	Cytotoxic Drugs
8	02	Drugs Affecting The Immune Response
8	03	Sex Hormones & Antag In Malig Disease
9	01	Anaemias + Other Blood Disorders
9	02	Fluids And Electrolytes
9	03	Intravenous Nutrition
9	04	Oral Nutrition
9	05	Minerals
9	06	Vitamins
9	07	Bitters And Tonics
9	08	Metabolic Disorders
9	09	Foods
9	10	Compound Vit/Mineral Formulations
9	11	Health Supplements
9	12	Other Health Supplements
10	01	Drugs Used In Rheumatic Diseases & Gout
10	02	Drugs Used In Neuromuscular Disorders
10	03	Drugs For Relief Of Soft-Tissue Inflamm
11	03	Anti-Infective Eye Preparations
11	04	Corti'roids & Other Anti-Inflamm.Preps.
11	05	Mydriatics And Cycloplegics
11	06	Treatment Of Glaucoma
11	07	Local Anaesthetics
11	08	Miscellaneous Ophthalmic Preparations
12	01	Drugs Acting On The Ear
12	02	Drugs Acting On The Nose
12	03	Drugs Acting On The Oropharynx
13	01	Vehicles and Emulsifying Agents
13	02	Emollient & Barrier Preparations
13	03	Top Local Anaesthetics & Antipruritics
13	04	Topical Corticosteroids
13	05	Preparations For Eczema And Psoriasis
13	06	Acne and Rosacea
13	07	Preparations For Warts And Calluses
13	08	Sunscreens And Camouflagers
13	09	Shampoo&Other Preps For Scalp&Hair Cond
13	10	Anti-Infective Skin Preparations
13	11	Skin Cleansers And Antiseptics
13	12	Antiperspirants
13	13	Wound Management Products
13	14	Topical Circulatory Preparations
13	15	Miscellaneous Topical Preparations
14	04	Vaccines And Antisera
14	05	Immunoglobulins
15	01	General Anaesthesia
15	02	Local Anaesthesia

18	03	X-Ray Contrast Media
19	01	Alcohol, Wines & Spirits
19	02	Selective Preparations
19	04	Single Substances
19	05	Other Preparations
19	06	Acids
19	07	Base/Dil/Susp Agents/Stabilisers
19	08	Colouring,Flavouring & Sweetening Agents
19	09	Disinfectants,Preserv&Sterilising Agents
19	12	Electrode/Ultrasonic Gels
19	13	Cordials/Soft Drinks
19	14	Waters
19	15	Other Gases
20	01	Absorbent Cottons
20	02	Arm Sling/Bandages
20	03	Wound Management & other Dressings
20	04	Gauzes & Gauze Tissue
20	05	Tracheostomy & Laryngectomy Appliances
20	06	Foam
20	07	Lints
20	08	Plasters
20	09	Stockinette
20	10	Surgical Adhesive Tape
20	11	Surgical Sutures
20	12	Swabs
20	13	Unspecified Dressing
20	14	Skin Closure Strips, Sterile
20	15	Skin Adhesive,Sterile
20	17	Cervical Collar
20	18	Cellulose Wadding BP 1988
20	19	Sodium Hyaluronate
20	20	Silk Garments
21	01	Other Appliances
21	02	Catheters
21	03	Chiropody Appliances
21	04	Contraceptive Devices
21	06	Trusses
21	07	Elastic Hosiery
21	08	Oxygen Masks
21	12	Peak Flow Meters
21	13	Catheter Maintenance Solutions
21	14	Lubricant Gels
21	16	Irrigation Solutions
21	18	Vacuum Pumps for Erectile Dysfunction
21	19	Oral Film Forming Agents
21	20	Venous Ulcer Compression System
21	21	Dry Mouth Products
21	22	Emollients
21	23	Vaginal Moisturisers
21	24	Nasal Products
21	25	Vaginal Dilators
21	26	Leg Ulcer Wrap
21	27	Lymphoedema Garments
21	28	Anal Irrigation System
21	29	Plantar Pressure Offloading Device
21	30	Eye Products
21	31	Cycloidal Vibration Accessories
21	32	Inhalation Solutions

21	33	Indwelling Pleural Cath Drain System
21	34	Vaginal PH Correction Gels
22	02	Anal Plugs
22	05	Catheter Valves
22	10	Drainable Dribbling Appliances
22	15	Faecal Collectors
22	20	Incontinence Belts
22	30	Incontinence Sheaths
22	40	Incontinence Sheath Fixing Strips & Adh
22	50	Leg Bags
22	60	Night Drainage Bags
22	70	Suspensory Systems
22	80	Tubing And Accessories
22	90	Urinal Systems
23	05	Adhesive Discs/Rings/Pads/Plasters
23	10	Adhesive (Pastes/Sprays/Solutions)
23	15	Adhesive Removers (Sprays/Liquids/Wipes)
23	20	Bag Closures
23	25	Bag Covers
23	30	Belts
23	35	Colostomy Bags
23	40	Colostomy Sets
23	45	Deodorants
23	46	Discharge Solidifying Agents
23	50	Filters/Bridges
23	55	Flanges
23	60	Ileostomy Bags
23	65	Ileostomy Sets
23	70	Irrigation Washout Appliances
23	75	Pressure Plates/Shields
23	80	Skin Fillers And Protectives
23	85	Skin Protectors
23	90	Stoma Caps/Dressings
23	92	Tubing
23	94	Two Piece Ostomy Systems
23	96	Urostomy Bags
23	99	Ostomy Appliances R/Sub Allowed Pre 1985

**Published by The NHS Information Centre
Part of the Government Statistical Service**

ISBN number 978-1-84636-280-4

This publication may be requested in large print or other formats.

For further information:

www.ic.nhs.uk

0845 300 6016

enquiries@ic.nhs.uk

Copyright © 2009, Health and Social Care Information Centre, Prescribing Support and Primary Care Services. All rights reserved.

This work remains the sole and exclusive property of the Health and Social Care Information Centre and may only be reproduced where there is explicit reference to the ownership of the Health and Social Care Information Centre.

This work may be re-used by NHS and government organisations without permission.

This work is subject to the Re-Use of Public Sector Information Regulations and permission for commercial use must be obtained from the copyright holder