

National Oesophago – Gastric Cancer Audit

Selected results from the Third Annual Report

NOGCA project team

The Royal College of Surgeons of England Tom Palsler, David Cromwell,
Jan van der Meulen

AUGIS Richard Hardwick

British Society of Gastroenterology Stuart Riley

The Information Centre Kimberley Greenaway, Steve Dean

Overview

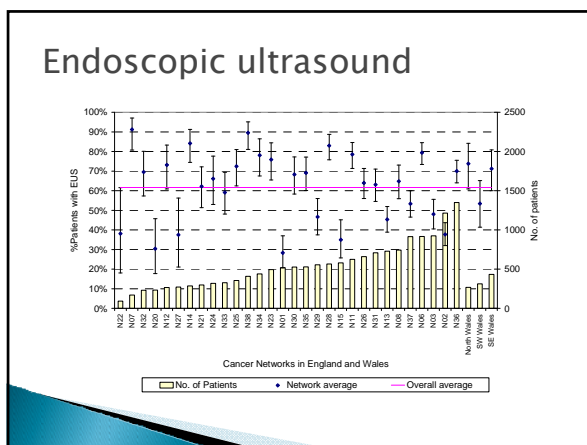
- ▶ Prospective Audit includes
 - Patients diagnosed with invasive epithelial O-G cancer
 - in English and Welsh NHS trusts
 - between 1 October 2007 and 30 June 2009
- ▶ Participation:
 - 152 of 154 English NHS trusts (99%)
 - All 44 cancer centres
 - All Welsh NHS trusts

Data submitted

Data Record	Number of patients	Case-ascertainment
Tumour details / treatment plan	16,264 Eng	71%
	1,015 Wal	98%
Surgical details (curative intent)	3,803	82%
Post-operative pathology	3,511	
Endoscopic palliative therapy	2,782	
Oncology treatment	3,995 palliative	
	2,830 curative	

Staging investigations

- ▶ Before deciding on curative treatment:
 - All patients with an oesophageal / junctional tumour should have an endoscopic ultrasound



Curative surgery

- ▶ The minimum number of lymph nodes required for staging the disease (UICC staging system).
 - Oesophagectomies = at least 6 nodes
 - Gastrectomies = at least 15 nodes
- ▶ Audit found standards met for:
 - 96% of oesophagectomies
 - 75% of gastrectomies

Outcomes: Oesophagectomy

Outcomes for 2,200 procedures	Rate %	95% CI
30-day	3.8	3.1 - 4.7
90-day	5.7	4.8 - 6.8
Anastomotic leak	8.3	7.2 - 9.6
Chyle leak	3.1	2.4 - 4.0
Respiratory	12.9	11.5 - 14.4

Outcomes: Gastrectomy

Outcomes For 1412 procedures	Rate %	95% CI
30-day	4.5	3.4 - 5.7
90-day	6.9	5.6 - 8.3
Anastomotic leak	5.9	4.7 - 7.2
Respiratory	7.3	6.0 - 8.8

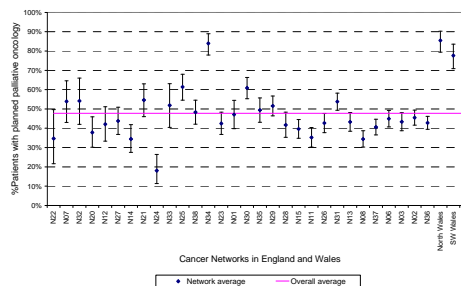
Min-invasive Oesophagectomy

Complication	Open	MI	Adjusted Odds ratio
30 - Day	4.1	3.2	0.81 (0.44 to 1.46)
90 - Day	5.8	5.5	0.98 (0.65 to 1.45)
Anastomotic leak	7.4	10.5	1.55 (1.11 to 2.18)
Respiratory	13.8	10.8	0.85 (0.56 - 1.30)

Pathology outcomes

Status	Oesophagectomy % (95% CI)	Gastrectomy % (95% CI)
Positive longitudinal resection margin	6.4 (5.3 - 7.6)	8.9 (7.4 - 10.6)

Planned Palliative Oncology



Planned Palliative Oncology

Age group	Performance status				
	0	1	2	3	4
Under 60	82%	78%	62%	47%	27%
60 to 70	83%	75%	57%	27%	12%
70 to 80	72%	60%	46%	16%	8%
80 plus	45%	35%	21%	8%	6%

Issues for Networks and Trusts

- ▶ Compliance with EUS staging investigations
- ▶ Monitoring of pathology outcomes
 - Adequate lymph node excision
 - Low rates of positive longitudinal margins
- ▶ Cautious introduction of MI surgery
 - Follow AUGIS guidelines
- ▶ Review planning of palliative oncology

Next National Audit

- ▶ HQIP commissioning next audit
- ▶ Audit will begin in April 2011
- ▶ Similar scope to first Audit
 - Include patients with high-grade dysplasia
 - Capture symptoms on referral
 - Capture slightly more data on palliative care